



*jordan fishwick*

46 Stanley Road, WA16 0DE  
Offers Over £250,000





Located in the sought-after town of Knutsford, this two bedroom terraced property offers an excellent opportunity for buyers looking to modernise and create a charming home to their own taste. The accommodation briefly comprises a lounge, kitchen and a downstairs shower room with WC. To the first floor there are two generous double bedrooms. Externally, the property benefits from a private patio area. This property offers great potential for refurbishment and would make an ideal purchase for first-time buyers, investors, or those seeking a project in a desirable Cheshire location.

## Stanley Road Knutsford WA16 0DE

Offers Over £250,000






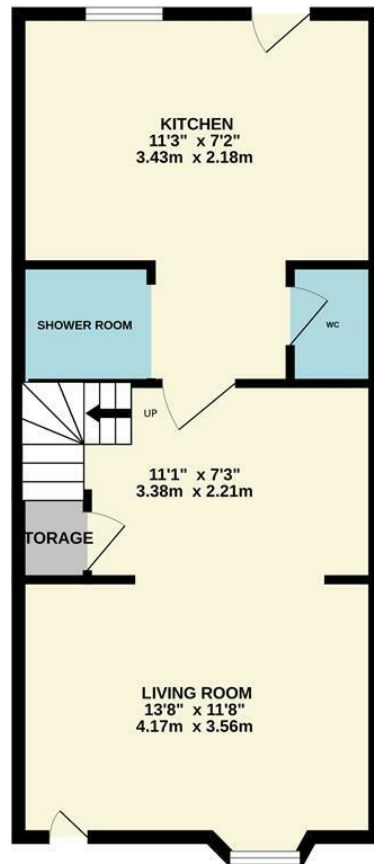


- Terrace Property
- Two Bedrooms
- Close Proximity To Amenities
- In Need Of Modernisation
- Central Location
- Ideal for First Time Buyers

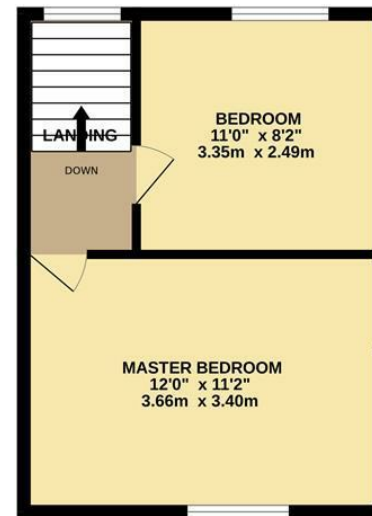


| Energy Efficiency Rating                    |   |           |
|---|---|-----------|
|   | Current   | Potential |
| Very energy efficient - lower running costs |   |           |
| (92 plus) A                                 |   | 89        |
| (81-91) B                                   |   |           |
| (69-80) C                                   | 70  |           |
| (55-68) D                                   |   |           |
| (39-54) E                                   |   |           |
| (21-38) F                                   |   |           |
| (1-20) G                                    |   |           |
| Not energy efficient - higher running costs |   |           |
| England & Wales                             | EU Directive 2002/91/EC  |           |

GROUND FLOOR



1ST FLOOR



Measurements are approximate. Not to scale. Illustrative purposes only.  
Made with Metropix ©2025



These particulars are believed to be accurate but they are not guaranteed and do not form a contract. Neither Jordan Fishwick nor the vendor or lessor accept any responsibility in respect of these particulars, which are not intended to be statements or representations of fact and any intending purchaser or lessee must satisfy himself by inspection or otherwise as to the correctness of each of the statements contained in these particulars. Any floorplans on this brochure are for illustrative purposes only and are not necessarily to scale.

Offices at: Chorlton, Didsbury, Disley, Hale, Glossop, Macclesfield, Manchester Deansgate, Manchester Whitworth Street, New Mills, Sale, Wilmslow and Withington

36-38 Alderley Road, Wilmslow SK91JX  
**01625 532000**

wilmslow@jordanfishwick.co.uk  
www.jordanfishwick.co.uk