



jordanfishwick

Eton Drive

£1,200 PCM



Eton Drive, Cheadle, SK8 3WA

£1,200 PCM

AVAILABLE NOW PART FURNISHED

Occupying a first floor corner position of this purpose built block, this luxury apartment on this highly sought after development must be viewed to be appreciated.

Together with it's location close to the A34 bypass for Manchester or Wilmslow, next door to the David Lloyd gym and across the way from John Lewis and Sainsbury's.

Freshly Spacious hallway with mirrored storage cupboards and other large storage cupboards, light and airy master bedroom with en-suite shower room, second double bedroom, good sized lounge/dining room with dual aspect views, main bathroom with shower over bath and a stylish breakfast kitchen with appliances

The property also benefits from a door entry system, double glazing, gas central heating and allocated parking.

Contact Wilmslow 01625 536300 £1200.00.00pcm

COUNCIL TAX E

EPC B

LOCATION

Luxury apartment on this highly sought after development must be viewed to be appreciated. Together with it's location close to the A34 bypass for Manchester or Wilmslow, next door to the David Lloyd gym and across the way from John Lewis and Sainsbury's.

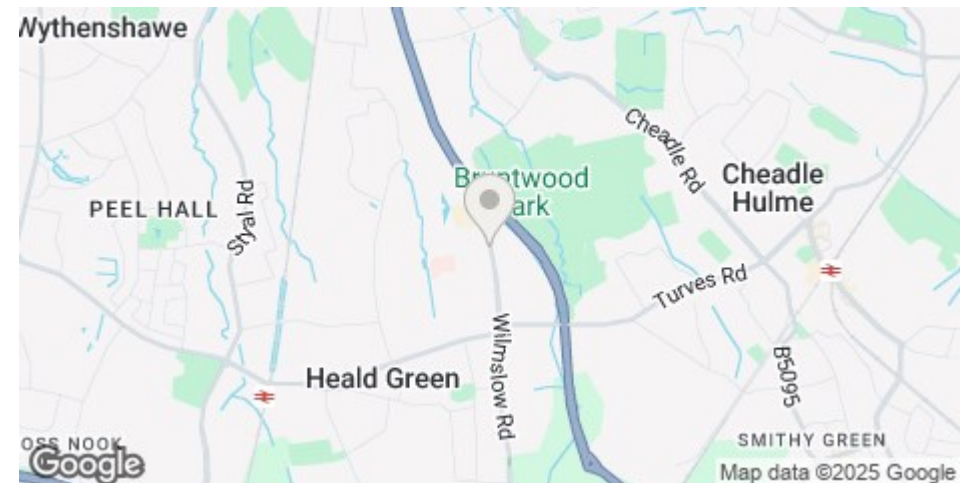
Jordan Fishwick Estate and Letting Agents Wilmslow office is located in a prime position central to the bustling and stylish town centre. With our impressive frontage it's impossible to miss our attractive office.

Managed by Guy Grainger, Partner, who has been an Estate Agent since 1980, and has a wealth of local knowledge and experience With busy sales and lettings departments all under the same roof along with our independent mortgage advisor on hand the Wilmslow branch has everything you need to help with your sales or lettings transactions.

Knowledgeable and friendly staff also compliment the range of services we offer and we are known throughout the Wilmslow area for our proactive approach in helping people find their dream home.

DIRECTIONS

From the John Lewis roundabout exit off the A34 take the first turning towards John Lewis, at the second roundabout take the second turning and then take the first turning on the right onto the Eton Drive development



- FIRST FLOOR APARTMENT
- TWO DOUBLE BEDROOMS
- TWO BATHROOMS
- LIGHT AND AIRY LOUNGE
- HIGHLY SOUGHT AFTER LOCATION
- COUNCIL TAX E
- EPC B

Postcode - SK8 3WA

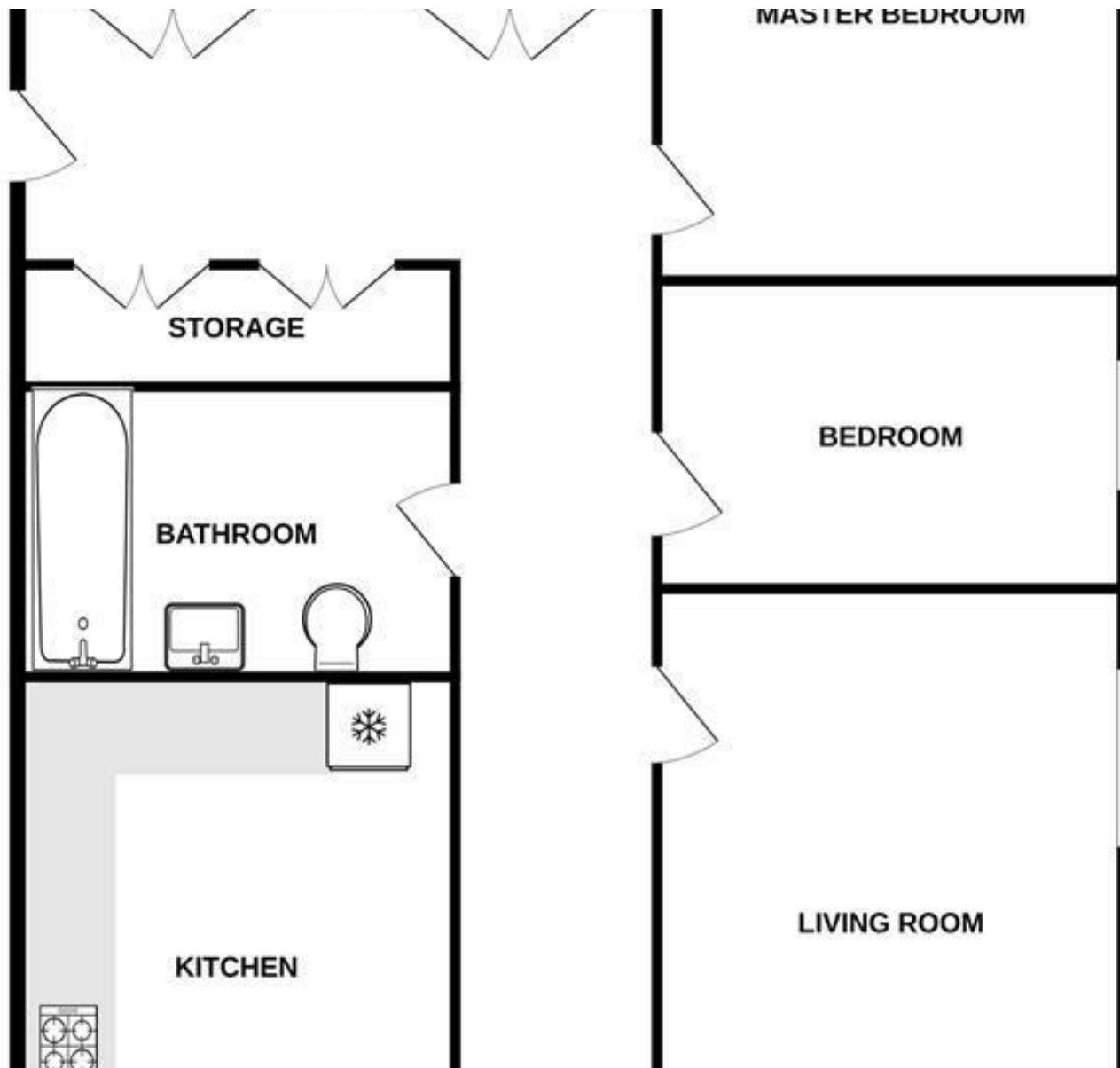
EPC Rating - B

Floor Area - sq ft

Local Authority - SMBC

Council Tax - E





These particulars are believed to be accurate but they are not guaranteed and do not form a contract. Neither Jordan Fishwick nor the vendor or lessor accept any responsibility in respect of these particulars, which are not intended to be statements or representations of fact and any intending purchaser or lessee must satisfy himself by inspection or otherwise as to the correctness of each of the statements contained in these particulars. Any floorplans on this brochure are for illustrative purposes only and are not necessarily to scale.

Offices at: Offices at Chorlton, Didsbury, Disley, Hale, Glossop, Macclesfield, Manchester Deansgate, Manchester Whitworth Street, New Mills, Sale, Wilmslow and Withington

01625 536300