



jordanfishwick

Vernon Road

£1,200 PCM



Vernon Road, Bredbury, SK6 2NX

£1,200 PCM

AVAILABLE NOW UNFURNISHED

Located on this quiet backwater and being only a short walk to local shops and with Stockport Town Centre within easy reach is this spacious two-bedroom semi detached.

The property also benefits from fresh redecoration and newly fitted carpets.

Entrance hall, lounge, fitted dining kitchen with gas hob and electric oven and door to rear garden.

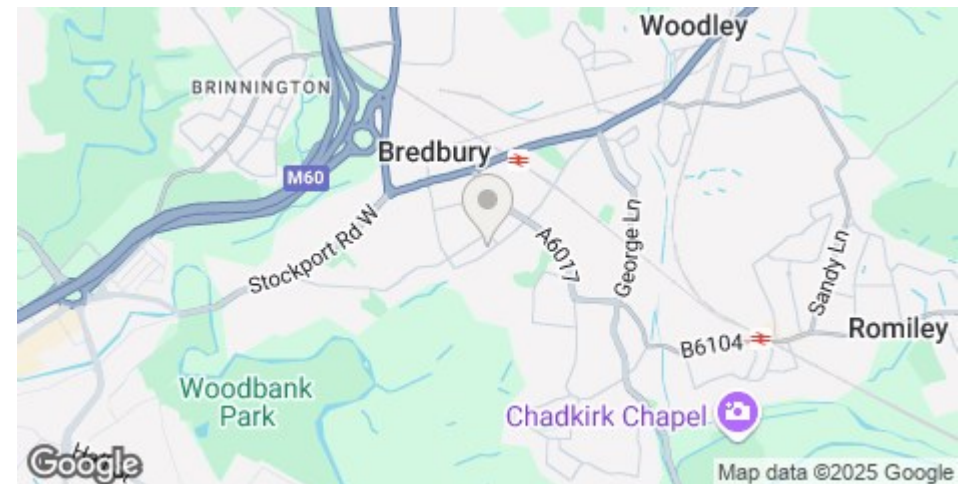
To the first floor two double bedrooms and bathroom with shower over bath.

Off road parking. Front and rear gardens.

Contact Wilmslow 01625 536300 £1200.00pcm

COUNCIL TAX B

EPC D



- TWO BEDROOMS
- FRESHLY DECORATED
- NEW CARPETS THROUGHOUT
- GOOD SIZED REAR GARDEN
- OFF ROAD PARKING
- COUNCIL TAX B
- EPC D

Postcode - SK6 2NX

EPC Rating - D

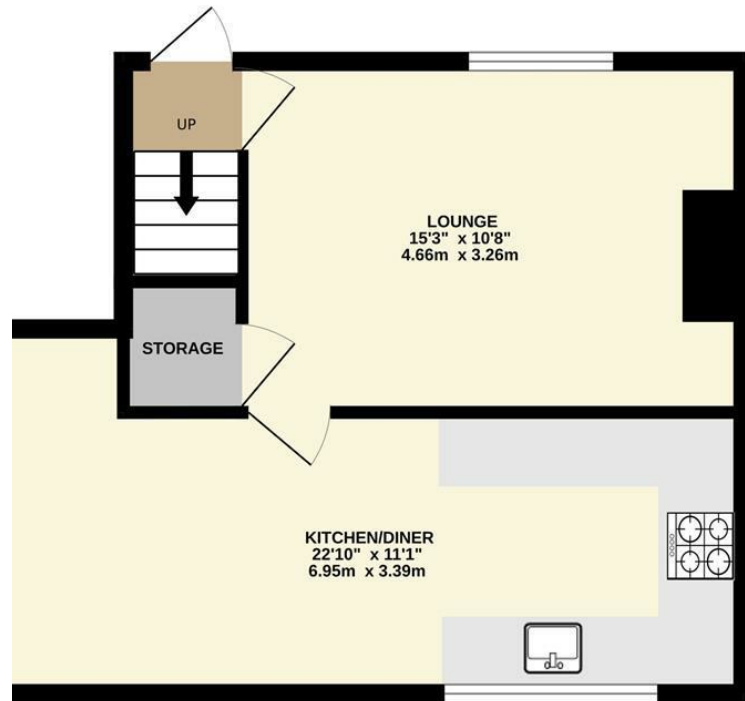
Floor Area - sq ft

Local Authority - SMBC

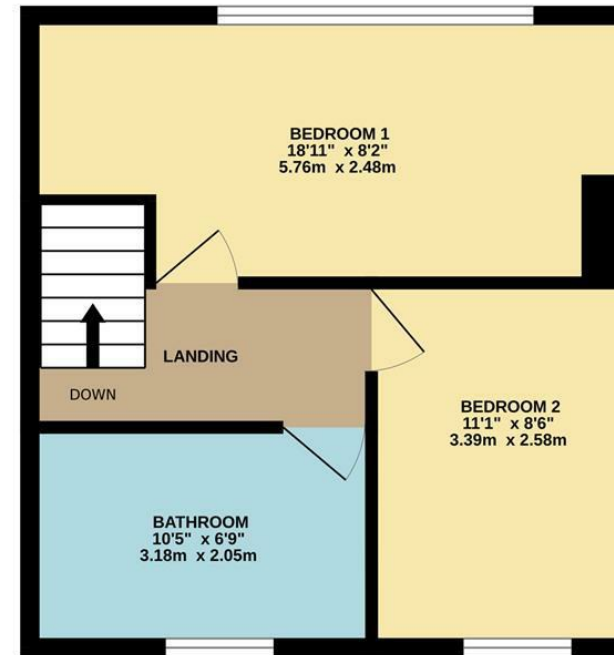
Council Tax - B



GROUND FLOOR



1ST FLOOR



Whilst every attempt has been made to ensure the accuracy of the floorplan contained here, measurements of doors, windows, rooms and any other items are approximate and no responsibility is taken for any error, omission or mis-statement. This plan is for illustrative purposes only and should be used as such by any prospective purchaser. The services, systems and appliances shown have not been tested and no guarantee as to their operability or efficiency can be given.
Made with Metropix ©2025



These particulars are believed to be accurate but they are not guaranteed and do not form a contract. Neither Jordan Fishwick nor the vendor or lessor accept any responsibility in respect of these particulars, which are not intended to be statements or representations of fact and any intending purchaser or lessee must satisfy himself by inspection or otherwise as to the correctness of each of the statements contained in these particulars. Any floorplans on this brochure are for illustrative purposes only and are not necessarily to scale.

Offices at: Offices at Chorlton, Didsbury, Disley, Hale, Glossop, Macclesfield, Manchester Deansgate, Manchester Whitworth Street, New Mills, Sale, Wilmslow and Withington

01619291994