



*jordanfishwick*

Knutsford Road

£1,100 PCM





## **Knutsford Road, Macclesfield, SK11 9AS**

**£1,100 PCM**

AVAILABLE NOW PART FURNISHED - VIEWING  
RECOMMENDED

Located in the heart of Chelford village this modern and attractive first floor apartment is ideal for the single professional or couple.

Entrance hall with stairs leading to first floor, modern kitchen with electric hob and oven, washing machine and fridge freezer, single bedroom, bathroom with shower cubicle, good sized double bedroom, generously sized lounge with feature brick wall.

Contact Wilmslow 01625 536300 £1100.00pcm

COUNCIL TAX B

EPC C





- FIRST FLOOR APARTMENT
- VILLAGE LOCATION
- MODERN KITCHEN AND BATHROOM
- GOOD SIZED LOUNGE
- COUNCIL TAX B
- EPC C

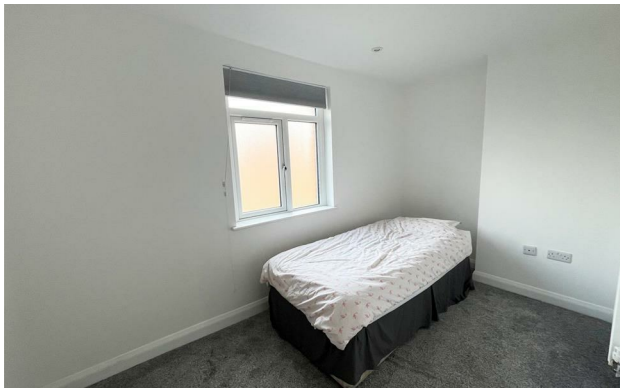
Postcode - SK11 9AS

EPC Rating - C

Floor Area - sq ft

Local Authority - Cheshire East

Council Tax - B





These particulars are believed to be accurate but they are not guaranteed and do not form a contract. Neither Jordan Fishwick nor the vendor or lessor accept any responsibility in respect of these particulars, which are not intended to be statements or representations of fact and any intending purchaser or lessee must satisfy himself by inspection or otherwise as to the correctness of each of the statements contained in these particulars. Any floorplans on this brochure are for illustrative purposes only and are not necessarily to scale.

Offices at: Offices at Chorlton, Didsbury, Disley, Hale, Glossop, Macclesfield, Manchester Deansgate, Manchester Whitworth Street, New Mills, Sale, Wilmslow and Withington

01619291994