



jordanfishwick

Ambrose Road

£2,500 PCM



Ambrose Road, Cheadle, SK8 3XN

£2,500 PCM

AVAILABLE EARLY JUNE PART FURNISHED - VIEWING ESSENTIAL TO APPRECIATE

This stunning four bedroom detached enjoys an enviable location on this new build estate on the borders of Heald Green and Handforth, Within easy reach of A34, Handforth Dean, Manchester International Airport and the motorway networks and only a short distance to local shops and schools.

This spacious family home also benefits from a sunny fully enclosed rear garden, garage and off road parking and is ideal for the growing family.

Entrance hall, downstairs WC, utility room with washing machine and boiler, light and airy lounge, good sized dining kitchen with gas hob and electric oven, dishwasher and fridge freezer. To the first floor principle bedroom with en-suite bathroom and fitted wardrobes, three further well proportioned bedrooms, family bathroom with separate shower cubicle.

Front and rear gardens. Off road parking. Garage

Contact Wilmslow 01625 536300 £2500.00pcm

COUNCIL TAX E

EPC B

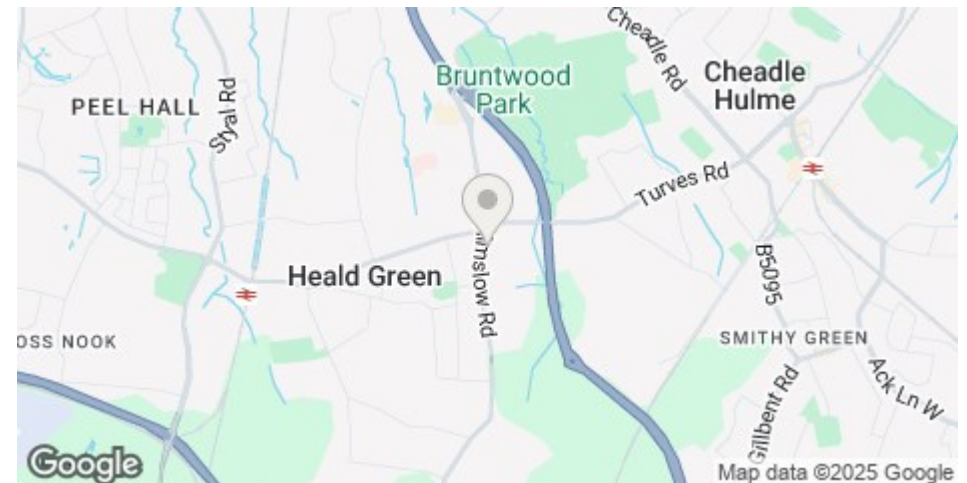
LOCATION

Foxcote is a beautiful development boasting a number of intricately designed 3 & 4 bedroom properties. Situated just 5 minutes' drive from Heald Green station and 9 minutes away from Manchester Airport, and with easy access to Manchester, Stockport and the Peak District, Cheadle's central location makes this quaint village an ideal place to call home.

Wilmslow is a thriving modern commuter town, with an excellent road and rail infrastructure, known for its elegant shops, cafes and restaurants. Offering a wide variety of cultural and historical attractions, such as Quarry Bank Mill, a former cotton mill and museum, the Styal Estate, a preserved 18th century village and Alderley Edge, a sandstone ridge with its legends of wizards. Areas of open space also include The Carrs country park and Lindow Common, forming part of Lindow Moss, best known for the historic discovery of "Lindow Pete". Wilmslow has something for everyone.

DIRECTIONS

From John Lewis head toward Wilmslow along Wilmslow Road at the Griffon Pub roundabout proceed straight across and continue along Wilmslow Road to the next main set of traffic lights. Turn left onto the development and then Turn left onto Hurlbote Lane Turn left towards Ambrose Rd, turn onto Ambrose Road



- DETACHED
- FOUR BEDROOMS
- GARAGE
- POPULAR LOCATION
- LIGHT AND AIRY INTERIOR
- COUNCIL TAX E
- EPC B

Postcode - SK8 3XN

EPC Rating - B

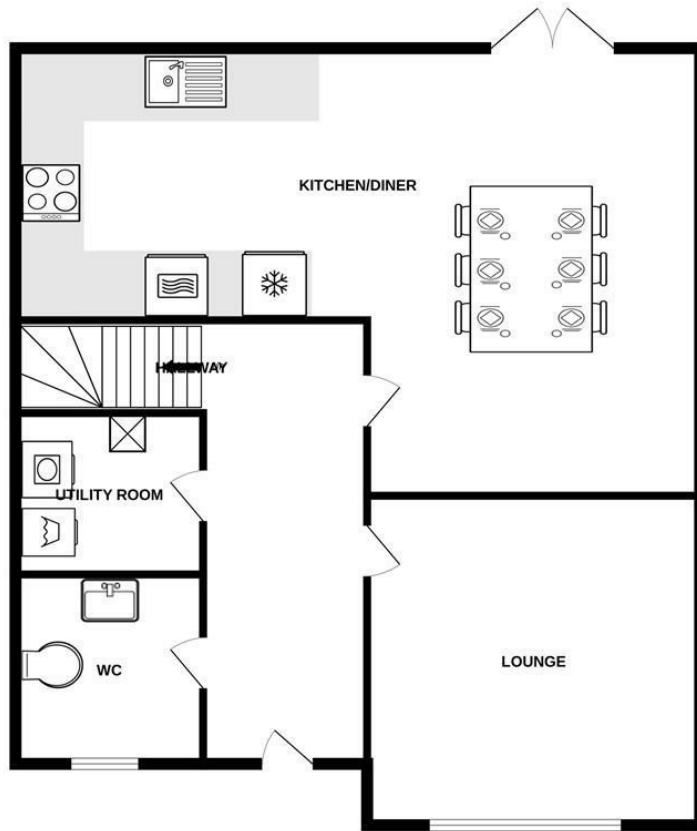
Floor Area - sq ft

Local Authority - Stockport MBC

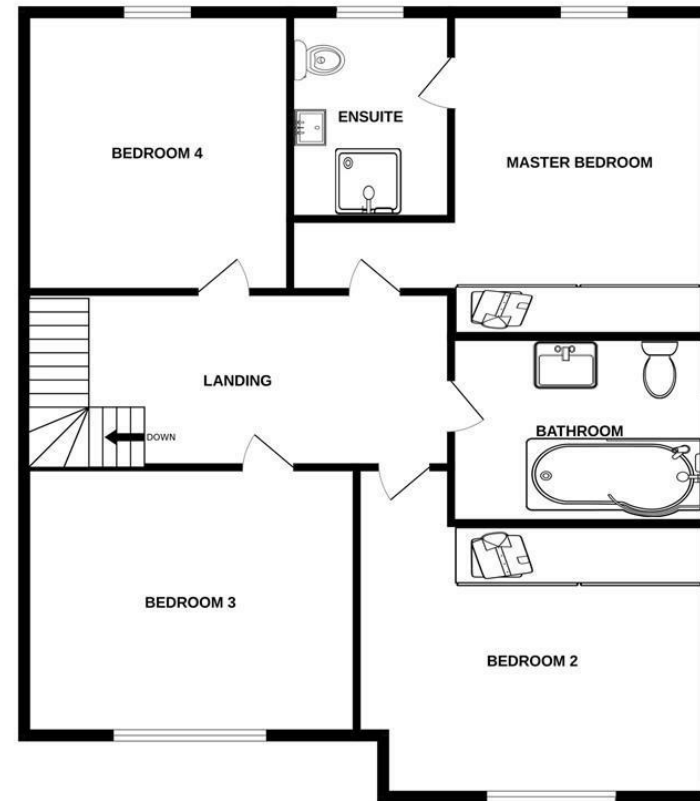
Council Tax - E



GROUND FLOOR



1ST FLOOR



Measurements are approximate. Not to scale. Illustrative purposes only
Made with Metropix ©2024



These particulars are believed to be accurate but they are not guaranteed and do not form a contract. Neither Jordan Fishwick nor the vendor or lessor accept any responsibility in respect of these particulars, which are not intended to be statements or representations of fact and any intending purchaser or lessee must satisfy himself by inspection or otherwise as to the correctness of each of the statements contained in these particulars. Any floorplans on this brochure are for illustrative purposes only and are not necessarily to scale.

Offices at: Offices at Chorlton, Didsbury, Disley, Hale, Glossop, Macclesfield, Manchester Deansgate, Manchester Whitworth Street, New Mills, Sale, Wilmslow and Withington

01619291994