



**jordanfishwick**

PEPPER STREET SNELSON MACCLESFIELD SK11 9BG  
**PCM £4,995 PCM**



PEPPER STREET SNELSON MACCLESFIELD SK11 9BG

Superb Family Home in Idyllic Setting – Available Mid-May (Part Furnished)

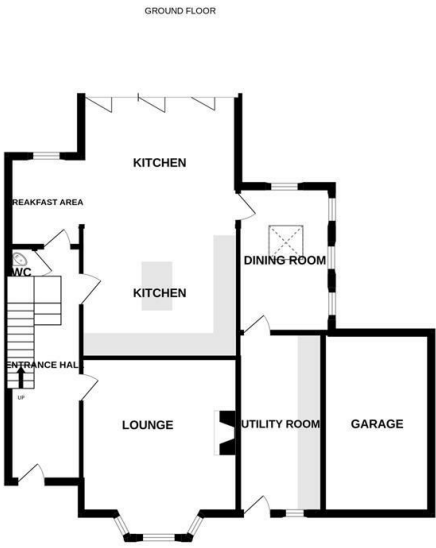
Surrounded by open countryside yet within easy reach of both Knutsford and Alderley Edge, this beautifully presented semi-detached home offers generous living space, a spacious gated driveway, and a large enclosed south-facing garden – perfect for family life, relaxing, or entertaining.

The entrance hall leads to a well-presented lounge with shuttered windows and a wood-burning stove, a ground floor cloakroom, and a stunning open-plan dining kitchen featuring an electric AGA, fridge freezer, dishwasher, and bi-fold doors opening onto the rear garden. A cosy snug and a utility room with washing machine and dryer complete the ground floor. From the utility room, stairs lead up to a bright, versatile home office located above the garage.

On the first floor, the main bedroom enjoys far-reaching views and a luxurious ensuite with both bath and separate shower. Two further double bedrooms with built-in storage share a stylish family bathroom, while the second floor features a fourth double bedroom with its own ensuite.

Available mid-May, part furnished. Early viewing highly recommended.

Contact Wilmslow 01625 536300 £4995.00pcm  
COUNCIL TAX F  
EPC D



Measurements are approximate. Not to scale. Illustrative purposes only  
Made with Metropix ©2025



- SUPERB FAMILY HOME
- SEMI RURAL LOCATION
- GATED
- FOUR BEDROOMS
- THREE BATHROOMS
- ENCLOSED REAR GARDEN
- COUNCIL TAX F
- EPC D

Energy Efficiency Rating	
Very energy efficient - lower running costs	Current Potential
(92 plus) A	85
(81-91) B	
(69-80) C	
(55-68) D	61
(39-54) E	
(21-38) F	
(1-20) G	
Not energy efficient - higher running costs	
England & Wales	EU Directive 2002/91/EC

Environmental Impact (CO <sub>2</sub> ) Rating	
Very environmentally friendly - lower CO <sub>2</sub> emissions	Current Potential
(92 plus) A	
(81-91) B	
(69-80) C	
(55-68) D	
(39-54) E	
(21-38) F	
(1-20) G	
Not environmentally friendly - higher CO <sub>2</sub> emissions	
England & Wales	EU Directive 2002/91/EC