



*jordan*fishwick

4 NETHERFIELDS ALDERLEY EDGE SK9 7EH  
PCM £2,300 PCM



4 NETHERFIELDS ALDERLEY EDGE SK9 7EH

AVAILABLE NOW PART FURNISHED - VIEWING ESSENTIAL TO APPRECIATE

Nestled in a peaceful cul-de-sac yet just a short walk from the heart of Alderley Edge, this immaculate two-bedroom mid-mews home offers modern living with exceptional convenience. Bright, stylish, and spacious, it's perfect for those seeking both comfort and contemporary design.

The entrance porch leads into a welcoming hallway with a downstairs WC. The lounge is beautifully presented, featuring shuttered windows and a feature fireplace, creating a warm and inviting atmosphere. The open-plan kitchen is fully integrated with modern appliances and is flooded with natural light, offering a spacious and airy setting.

Upstairs, two generous double bedrooms, both with fitted wardrobes, are served by a contemporary, high-spec bathroom suite.

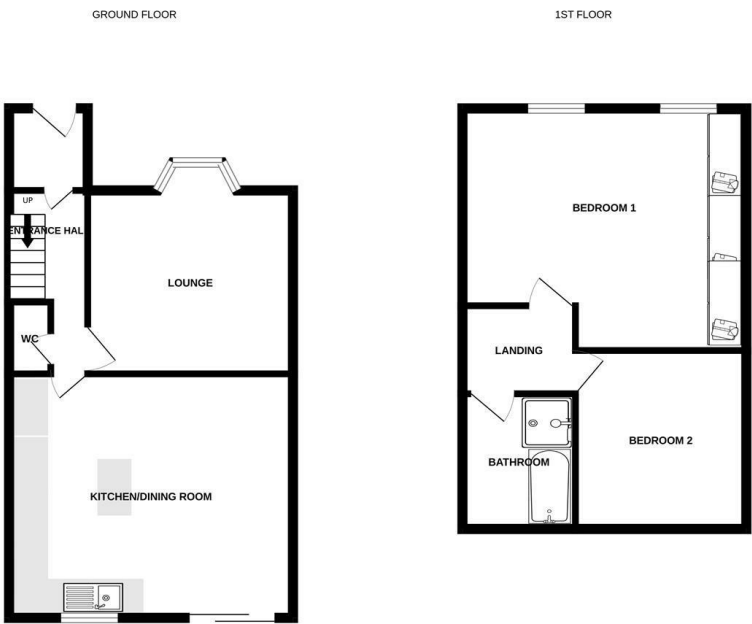
Outside, the property boasts well-maintained front and rear gardens, with the fully enclosed rear garden designed for low maintenance. A private garage and off-road parking add further convenience to this exceptional home.

Contact Wilmslow 01625 536300

£2300.00 pcm

COUNCIL TAX E

EPC C



Measurements are approximate. Not to scale. Illustrative purposes only. Made with Metronix i2025.



- IMMACULATE THROUGHOUT
- WALKING DISTANCE OF VILLAGE
- CUL DE SAC LOCATION
- TWO BEDROOMS
- OPEN PLAN DINING KITCHEN
- COUNCIL TAX E
- EPC C

