



*jordanfishwick*

7B WALLWORTH TERRACE ALTRINCHAM ROAD WILMSLOW

PCM £1,395 PČM



7B WALLWORTH TERRACE ALTRINCHAM ROAD WILMSLOW SK9 5NN

AVAILABLE NOW PART FURNISHED - VIEWING RECOMMENDED

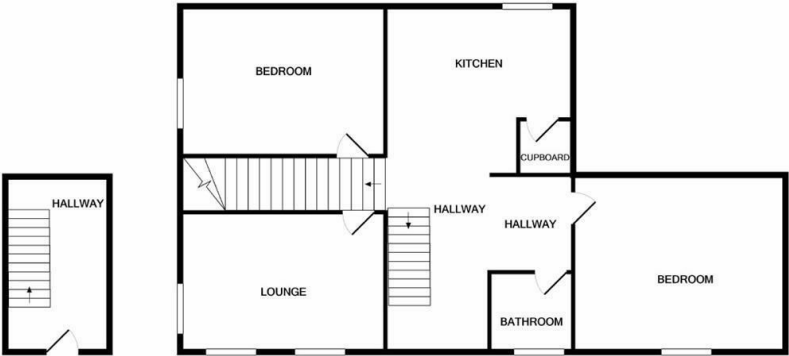
Forming part of a small row of terraces is this refurbished and extremely spacious 3/4-bedroom property. Located to the South of Wilmslow town centre but within easy walking distance of the train station and benefitting from off road parking to the rear and garage and only a short drive to Manchester International Airport and the motorway networks.

Entrance hall with stairs to first floor, fitted kitchen with electric hob and oven, fridge freezer, dishwasher and washer dryer, lounge with feature fireplace, two double bedrooms, bathroom with shower.

To the second floor two further good-sized bedrooms. Off road parking, Water included.

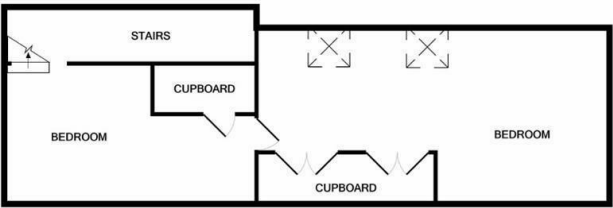
NO GARDEN BUT GARAGE AND AMPLE OFF-ROAD PARKING

Contact Wilmslow 01625 536300 £1395.00pcm



GROUND FLOOR  
APPROX. FLOOR  
AREA 114 SQ.FT.  
(10.6 SQ.M.)

1ST FLOOR  
APPROX. FLOOR  
AREA 1079 SQ.FT.  
(100.3 SQ.M.)



TOTAL APPROX. FLOOR AREA 1889 SQ.FT. (175.5 SQ.M.)  
Measurements are approximate. Not to scale. Illustrative purposes only.  
Made with Metropia C2020



- MID TERRACE
- GARAGE
- OFF ROAD PARKING
- THREE / FOUR BEDROOMS
- THREE RECEPTION ROOMS
- COUNCIL TAX C
- EPC E

Energy Efficiency Rating		Current	Potential
Very energy efficient - lower running costs			
(92 plus) A			
(81-91) B			
(69-80) C			
(55-68) D			
(39-54) E			
(21-38) F			
(1-20) G			
Not energy efficient - higher running costs			
England & Wales		EU Directive 2002/91/EC	

Environmental Impact (CO <sub>2</sub> ) Rating		Current	Potential
Very environmentally friendly - lower CO <sub>2</sub> emissions			
(92 plus) A			
(81-91) B			
(69-80) C			
(55-68) D			
(39-54) E			
(21-38) F			
(1-20) G			
Not environmentally friendly - higher CO <sub>2</sub> emissions			
England & Wales		EU Directive 2002/91/EC	