



*jordanfishwick*

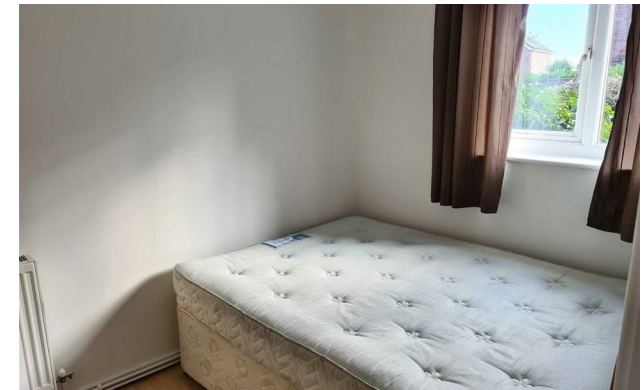
Seymour House

£900 PCM





## Seymour House, Wilmslow, SK9 2HB £900 PCM



### The Property

AVAILABLE MID JUNE FURNISHED - INTERNAL VIEWING  
RECOMMENDED

An extremely well-presented ground floor one bedroom apartment benefiting from gas fired central heating and UPVC double glazing whilst being set conveniently for local shops and amenities.

Communal entrance, private entrance with fitted storage leading to the open plan living room, contemporary kitchen, bedroom and modern bathroom suite. Off road parking space, communal gardens.

Contact Wilmslow 01625 536300 £900.00pcm

COUNCIL TAX A

EPC C

### Directions

SK9 2HB



- GROUND FLOOR APARTMENT
- ONE DOUBLE BEDROOM
- LOUNGE KITCHEN DINER
- OFF ROAD PARKING
- COMMUNAL GARDENS
- CUL DE SAC LOCATION
- COUNCIL TAX A
- EPC C

Postcode - SK9 2HB

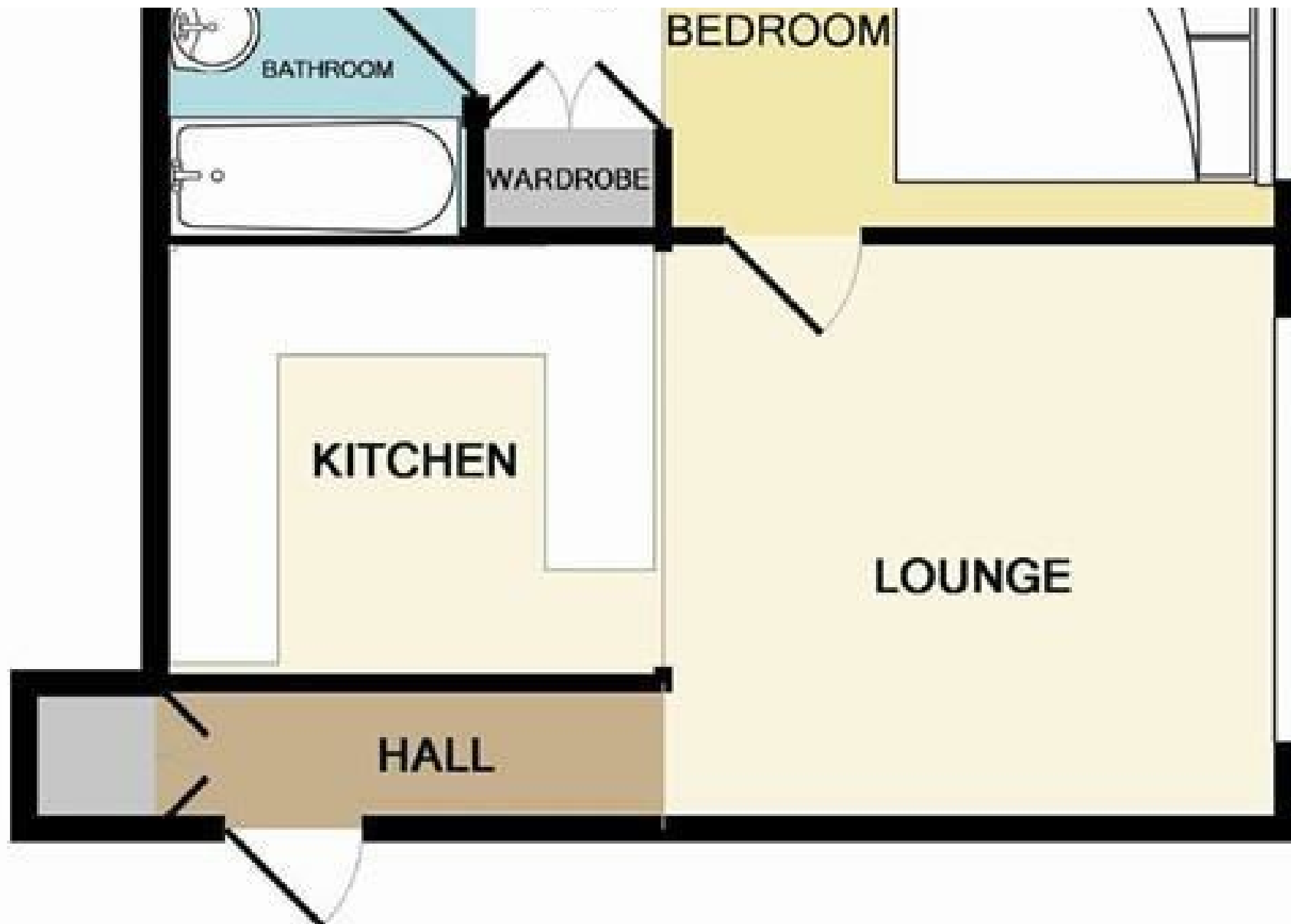
EPC Rating - C

Floor Area - sq ft

Local Authority - Cheshire East Council

Council Tax - A





These particulars are believed to be accurate but they are not guaranteed and do not form a contract. Neither Jordan Fishwick nor the vendor or lessor accept any responsibility in respect of these particulars, which are not intended to be statements or representations of fact and any intending purchaser or lessee must satisfy himself by inspection or otherwise as to the correctness of each of the statements contained in these particulars. Any floorplans on this brochure are for illustrative purposes only and are not necessarily to scale.

Offices at: Chorlton, Didsbury, Disley, Hale, Glossop, Macclesfield, Manchester Deansgate, Manchester Whitworth Street, New Mills, Sale, Wilmslow and Withington

01619291994