



jordan fishwick

14 Tranmere Drive, SK9 3BW
Guide Price £385,000



Tranmere Drive Handforth SK9 3BW

Guide Price £385,000




A link detached property tucked away within a cul de sac, just a short stroll from Handforth centre with all its various amenities and Handforth train station. The property is also within close proximity to open countryside, in easy reach of Manchester International Airport and the motorway network. The property offers versatile and contemporary living accommodation throughout which comprises in brief: entrance porch opening through to the living/dining room, fitted kitchen with integrated appliances, downstairs double bedroom and downstairs shower room. There is also the benefit of a single storey conservatory extension to the rear. The first floor accommodation comprises: master bedroom with fitted wardrobes, two further bedrooms and a white three piece family bathroom suite. To the front there is a driveway providing off road parking for multiple vehicles leading to the car port. To the rear there are well proportioned and well tended gardens which are mainly laid to lawn. Viewings are essential in order to fully appreciate.





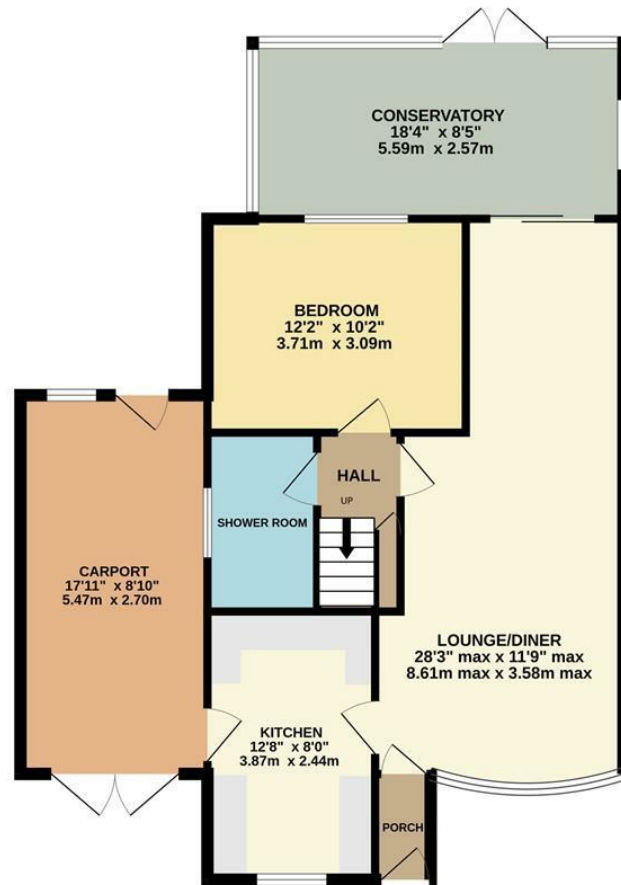
- Downstairs Shower room
- Close proximity to Handforth train station
- Downstairs Bedroom
- Large Driveway
- Beautiful Garden
- Four Bedrooms
- No Chain



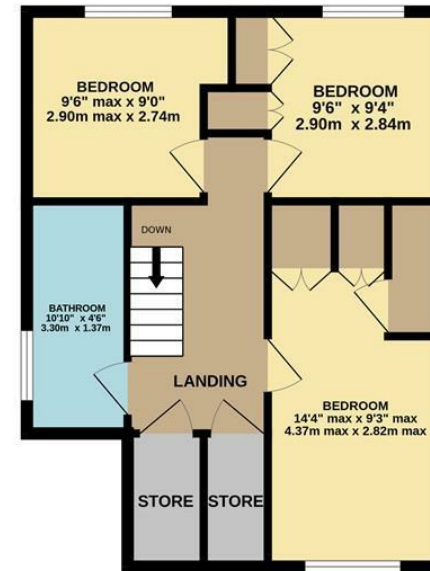
Energy Efficiency Rating		
	Current	Potential
Very energy efficient - lower running costs		
(92 plus) A		82
(81-91) B		
(69-80) C		62
(55-68) D		
(39-54) E		
(21-38) F		
(1-20) G		
Not energy efficient - higher running costs		
England & Wales		EU Directive 2002/91/EC 



GROUND FLOOR



1ST FLOOR



Measurements are approximate. Not to scale. Illustrative purposes only.
Made with Metropix ©2025



These particulars are believed to be accurate but they are not guaranteed and do not form a contract. Neither Jordan Fishwick nor the vendor or lessor accept any responsibility in respect of these particulars, which are not intended to be statements or representations of fact and any intending purchaser or lessee must satisfy himself by inspection or otherwise as to the correctness of each of the statements contained in these particulars. Any floorplans on this brochure are for illustrative purposes only and are not necessarily to scale.

Offices at: Chorlton, Didsbury, Disley, Hale, Glossop, Macclesfield, Manchester Deansgate, Manchester Whitworth Street, New Mills, Sale, Wilmslow and Withington

36-38 Alderley Road, Wilmslow, Cheshire, SK9 1JX

01625 532000

wilmslow@jordanfishwick.co.uk

www.jordanfishwick.co.uk