



*jordan fishwick*

Newbury Court

£925 PCM





## Newbury Court, Wilmslow, SK9 5JD £925 PCM



### The Property

AVAILABLE EARLY JUNE PART FURNISHED - SOUTH WILMSLOW LOCATION  
A spacious ground floor apartment in an established residential area within walking distance of Wilmslow Town Centre and the train station.  
Benefitting from off road parking and communal gardens and within easy reach of the train station this one bedroom apartment is always a popular choice.  
Communal entrance hall, private entrance hall with storage, lounge with feature fireplace (decorative purposes only) and window overlooking communal gardens, modern fitted kitchen with electric cooker, washing machine, fridge with freezer box and microwave, double bedroom with fitted wardrobes and bathroom with shower over bath.  
Communal gardens. Off road parking. Electric heating  
Contact Wilmslow 01625 536300 £925.00pcm  
EPC E  
COUNCIL TAX B

### Directions

SK9 5JD



- GROUND FLOOR APARTMENT
- ONE DOUBLE BEDROOM
- SOUTH WILMSLOW LOCATION
- WALKING DISTANCE OF TOWN CENTRE AND TRAIN STATION
- COMMUNAL GARDENS
- OFF ROAD PARKING
- COUNCIL TAX B

Postcode - SK9 5JD

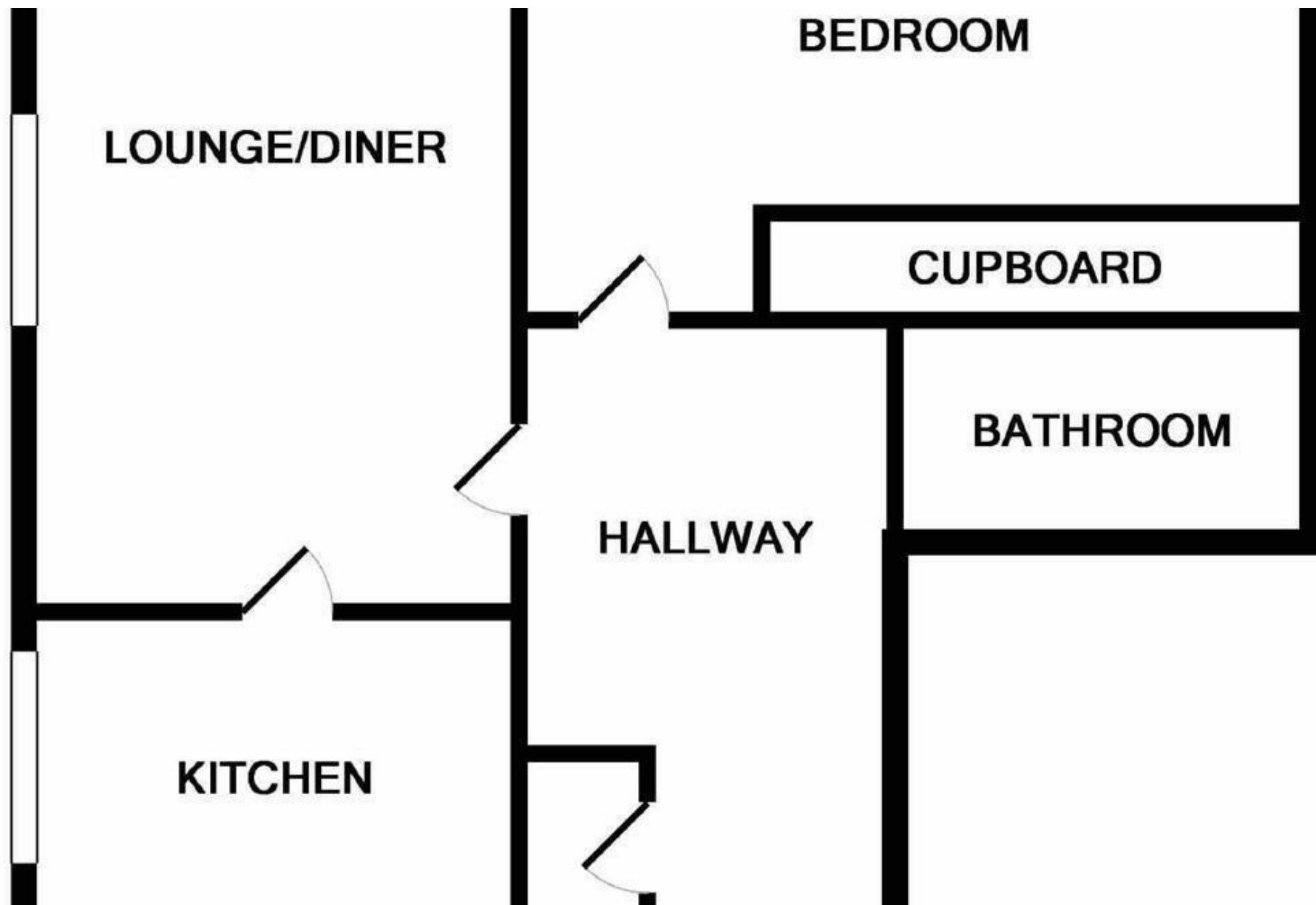
EPC Rating - E

Floor Area - sq ft

Local Authority - Cheshire East Council

Council Tax - B





These particulars are believed to be accurate but they are not guaranteed and do not form a contract. Neither Jordan Fishwick nor the vendor or lessor accept any responsibility in respect of these particulars, which are not intended to be statements or representations of fact and any intending purchaser or lessee must satisfy himself by inspection or otherwise as to the correctness of each of the statements contained in these particulars. Any floorplans on this brochure are for illustrative purposes only and are not necessarily to scale.

Offices at: Chorlton, Didsbury, Disley, Hale, Glossop, Macclesfield, Manchester Deansgate, Manchester Whitworth Street, New Mills, Sale, Wilmslow and Withington

01625 536300