



**jordanfishwick**

2 FIELDVIEW MOSSWAYS PARK WILMSLOW SK9 5PA  
Guide Price £164,950



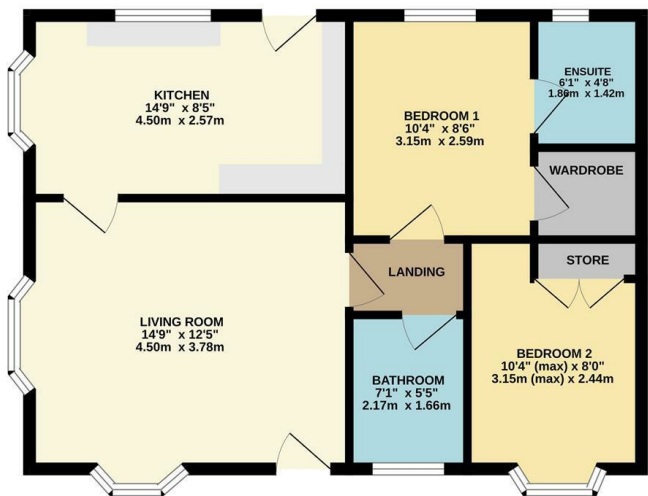
## 2 FIELDVIEW MOSSWAYS PARK WILMSLOW SK9 5PA

NO CHAIN (Occupier's over 50's) Jordan Fishwick are delighted to offer this two bedroom park home which offers modernised accommodation boasting a beautiful rural setting whilst being in close proximity to Wilmslow. Set in the quiet location of Mobberley, popular towns in the surrounding areas include Knutsford, Wilmslow and Alderley Edge offering great local amenities and attractions in and around.

The residential park home in brief comprises a spacious living area offering ample room for entertaining and dining furniture, as well as featuring box bay windows to the front and side aspect. A sizeable kitchen that presents wall and floor fitted units with complementary worktops and multiple integrated appliances. Two double bedrooms are well presented, with bedroom one promoting a walk-in wardrobe and a modernised ensuite, and bedroom two having fitted storage. The family bathroom comprises of a three piece white bathroom suite. Externally the home provides off road parking, space for outdoor seating and is a stone's throw away from idyllic views. Viewing essential to appreciate.



GROUND FLOOR



Measurements are approximate. Not to scale. Illustrative purposes only. Made with Metropix 12025



- Semi Rural Setting
- Two Double Bedroom Accomodation
- Ensuite
- Spacious Living Area
- Off Road Parking
- Mossways Park, Mobberley
- No Chain