



*jordan fishwick*

126 Knutsford Road, SK9 6JH  
Guide Price £1,095,000





## Knutsford Road Wilmslow SK9 6JH

Guide Price £1,095,000



The property is situated in an enviable South Wilmslow location and therefore is within convenient reach of local schools and open countryside alike. Having been remodelled over recent years by the current owners, this stunning four bedroom family home has been transformed into a most splendid home, providing the perfect balance for the new owners. The stunning interior comprises in brief: entrance hallway, stunning living/kitchen/diner, spacious living room, dining room, study, utility room and downstairs shower room. The first floor comprises two double bedrooms with en-suites, two further double bedrooms and a contemporary family bathroom. Externally the property has rear garden which is mainly laid to lawn with garden bar which is ideal for entertaining. To the front of the property is a sweeping driveway with parking for multiple vehicles. Viewings essential to fully appreciate.








- Detached residence
- Four Double bedrooms
- Renovated by current owners
- Two en suites
- Open plan living
- Garden Bar
- South Wilmslow location
- Ample off road parking

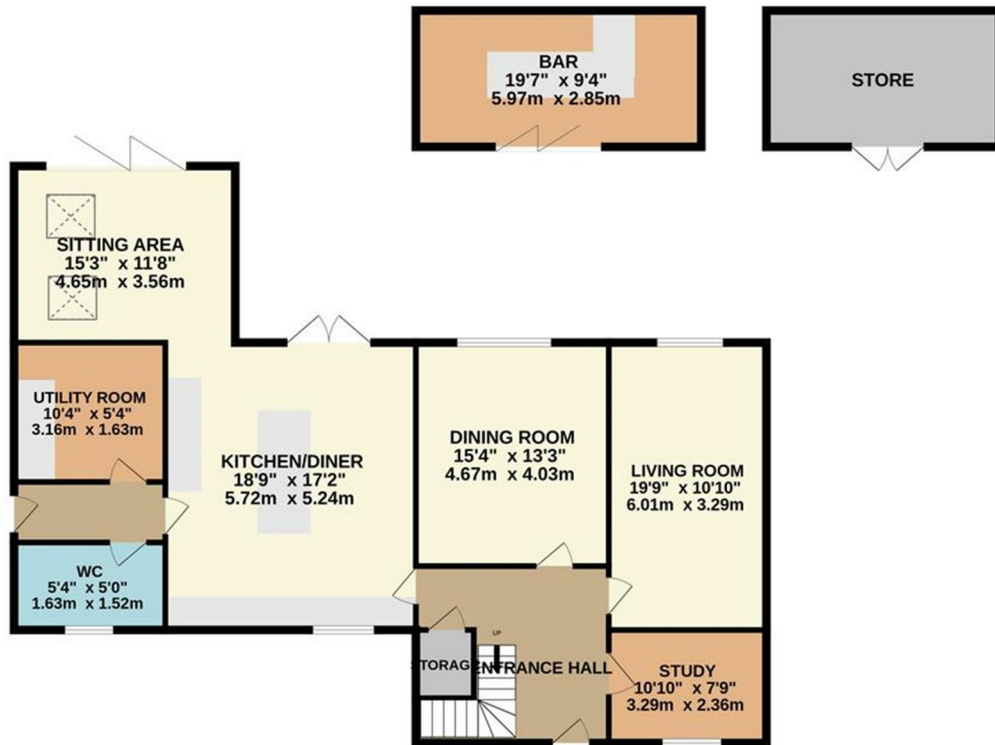


Energy Efficiency Rating		
	Current	Potential
Very energy efficient - lower running costs		
(92 plus) <b>A</b>		<b>76</b>
(81-91) <b>B</b>		
(69-80) <b>C</b>		
(55-68) <b>D</b>	<b>59</b>	
(39-54) <b>E</b>		
(21-38) <b>F</b>		
(1-20) <b>G</b>		
Not energy efficient - higher running costs		
<b>England &amp; Wales</b>		EU Directive 2002/91/EC 

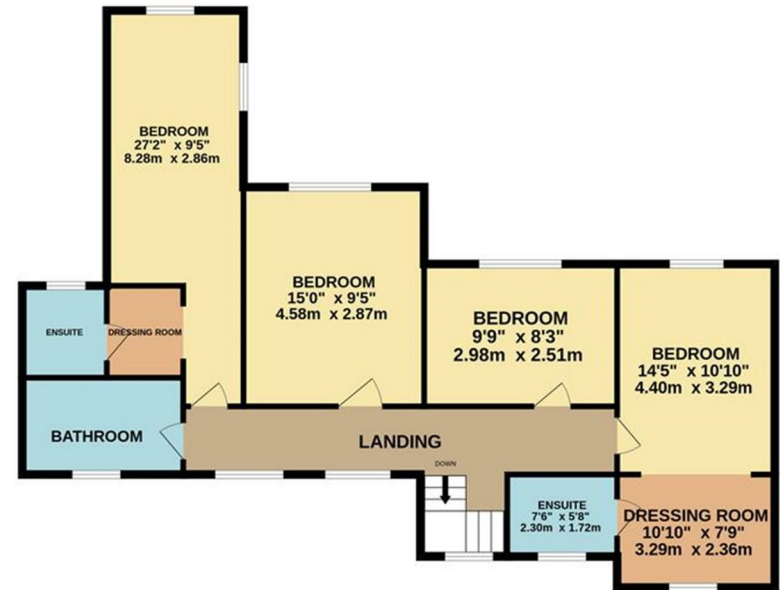




## GROUND FLOOR



## 1ST FLOOR



Measurements are approximate. Not to scale. Illustrative purposes only  
Made with Metropix ©2025



These particulars are believed to be accurate but they are not guaranteed and do not form a contract. Neither Jordan Fishwick nor the vendor or lessor accept any responsibility in respect of these particulars, which are not intended to be statements or representations of fact and any intending purchaser or lessee must satisfy himself by inspection or otherwise as to the correctness of each of the statements contained in these particulars. Any floorplans on this brochure are for illustrative purposes only and are not necessarily to scale.

Offices at: Chorlton, Didsbury, Disley, Hale, Glossop, Macclesfield, Manchester Deansgate, Manchester Whitworth Street, New Mills, Sale, Wilmslow and Withington

36-38 Alderley Road, Wilmslow, Cheshire, SK9 1JX

**01625 532000**

[wilmslow@jordanfishwick.co.uk](mailto:wilmslow@jordanfishwick.co.uk)

[www.jordanfishwick.co.uk](http://www.jordanfishwick.co.uk)