



jordanfishwick

Pepper Street

£5,000 PCM



Pepper Street, Macclesfield, SK11 9BG £5,000 PCM



The Property

Superb Family Home in Idyllic Setting – Available Mid-May (Part Furnished)

Surrounded by open countryside yet within easy reach of both Knutsford and Alderley Edge, this beautifully presented semi-detached home offers generous living space, a spacious gated driveway, and a large enclosed south-facing garden – perfect for family life, relaxing, or entertaining.

The entrance hall leads to a well-presented lounge with shuttered windows and a wood-burning stove, a ground floor cloakroom, and a stunning open-plan dining kitchen featuring an electric AGA, fridge freezer, dishwasher, and bi-fold doors opening onto the rear garden. A cosy snug and a utility room with washing machine and dryer complete the ground floor. From the utility room, stairs lead up to a bright, versatile home office located above the garage.

On the first floor, the main bedroom enjoys far-reaching views and a luxurious ensuite with both bath and separate shower. Two further double bedrooms with built-in storage share a stylish family bathroom, while the second floor features a fourth double bedroom with its own ensuite.

Available mid-May, part furnished. Early viewing highly recommended.

Contact Wilmslow 01625 536300 £5000.00pcm
COUNCIL TAX F
EPC D

Directions

SK11 9BG



- SUPERB FAMILY HOME
- SEMI RURAL LOCATION
- GATED
- FOUR BEDROOMS
- THREE BATHROOMS
- ENCLOSED REAR GARDEN
- COUNCIL TAX F
- EPC D

Postcode - SK11 9BG

EPC Rating - D

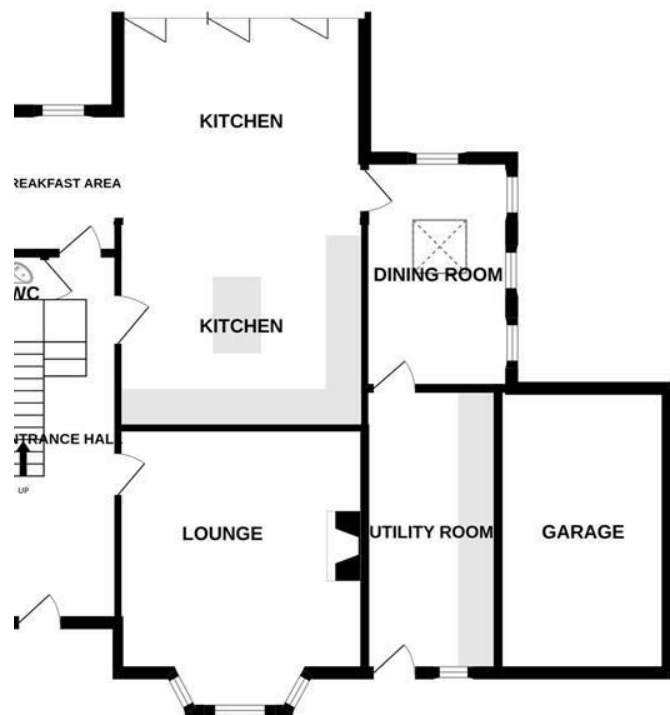
Floor Area - sq ft

Local Authority - Cheshire East

Council Tax - F



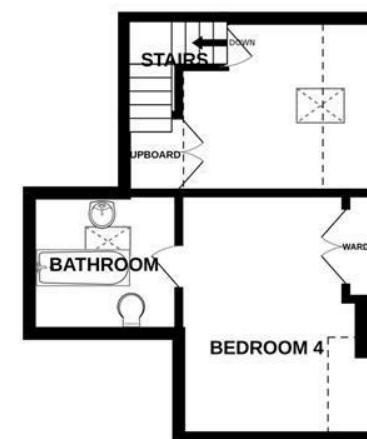
GROUND FLOOR



1ST FLOOR



2ND FLOOR



Measurements are approximate. Not to scale. Illustrative purposes only
Made with Metropix ©2025



These particulars are believed to be accurate but they are not guaranteed and do not form a contract. Neither Jordan Fishwick nor the vendor or lessor accept any responsibility in respect of these particulars, which are not intended to be statements or representations of fact and any intending purchaser or lessee must satisfy himself by inspection or otherwise as to the correctness of each of the statements contained in these particulars. Any floorplans on this brochure are for illustrative purposes only and are not necessarily to scale.

Offices at: Chorlton, Didsbury, Disley, Hale, Glossop, Macclesfield, Manchester Deansgate, Manchester Whitworth Street, New Mills, Sale, Wilmslow and Withington

01625 536300