



jordan fishwick

25 Worthington Place, SK9 2SX
Price £280,000



Worthington Place Wilmslow

Price £280,000




A beautifully presented and modern END mews property located on the exclusive Jones Homes development off Adlington Road in Wilmslow. This stunning property is part of the Cheshire East Council's covenant scheme and is offered at a 30% discounted price. Conditions apply as part of this shared EQUITY scheme with the advertising price representing 70% of the total value. The purpose of the scheme is to aid first time buyers living within the area who could not ordinarily afford to purchase. The accommodation in brief comprises an entrance hallway, downstairs WC, living room with French doors leading to the rear garden and a modern fitted stylish kitchen to the ground floor. The kitchen is has several integrated appliances which include a fridge freezer, 'Neff' hob, dishwasher, washer dryer. To the first floor there are two double bedrooms and a modern bathroom. Externally to the front of the property there is a block paved driveway providing off-road parking, whilst to the rear there is a low maintenance enclosed garden with patio, with the majority of the outside space being laid with artificial grass for all year use.





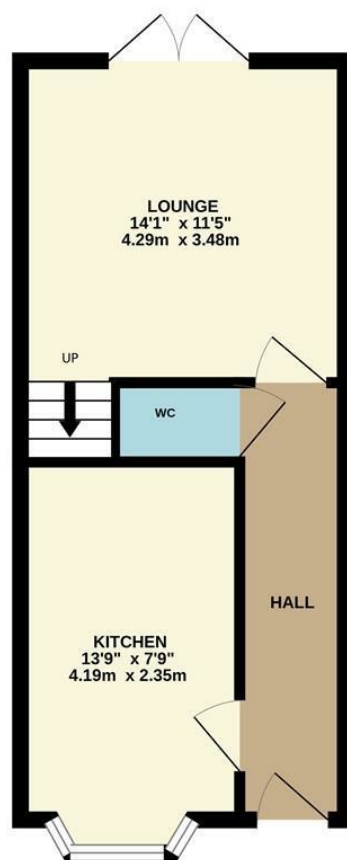
- Shared Equity Scheme
- Local Buyers only
- 70% of Full Value
- Modern Mews
- Two bedrooms
- Off Road Parking
- Excellent Location



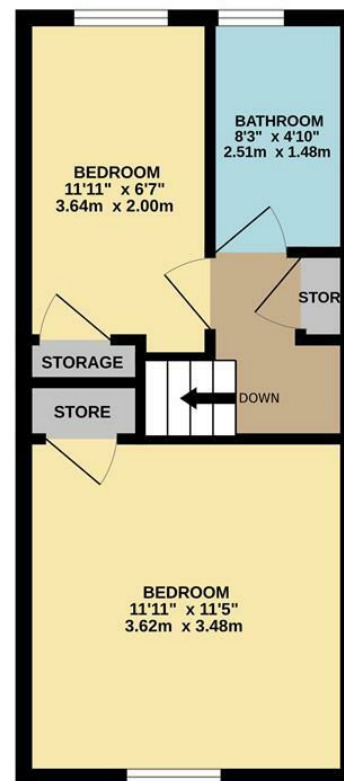
Energy Efficiency Rating		
	Current	Potential
Very energy efficient - lower running costs		
(92 plus) A		96
(81-91) B	82	
(69-80) C		
(55-68) D		
(39-54) E		
(21-38) F		
(1-20) G		
Not energy efficient - higher running costs		
England & Wales		EU Directive 2002/91/EC 



GROUND FLOOR



1ST FLOOR



Measurements are approximate. Not to scale. Illustrative purposes only.
Made with Metropix ©2025



These particulars are believed to be accurate but they are not guaranteed and do not form a contract. Neither Jordan Fishwick nor the vendor or lessor accept any responsibility in respect of these particulars, which are not intended to be statements or representations of fact and any intending purchaser or lessee must satisfy himself by inspection or otherwise as to the correctness of each of the statements contained in these particulars. Any floorplans on this brochure are for illustrative purposes only and are not necessarily to scale.

Offices at: Chorlton, Didsbury, Disley, Hale, Glossop, Macclesfield, Manchester Deansgate, Manchester Whitworth Street, New Mills, Sale, Wilmslow and Withington

36-38 Alderley Road, Wilmslow, Cheshire, SK9 1JX

01625 532000

wilmslow@jordanfishwick.co.uk

www.jordanfishwick.co.uk