



TO
ET
rdan fishwick
lettings
WILMSLOW
01625 536300
www.jordanfishwick.co.uk

jordan fishwick

Turnberry Drive

£1,395 PCM



Turnberry Drive, Wilmslow, SK9 2QW £1,395 PCM



The Property

PART FURNISHED AVAILABLE MID APRIL - VIEWING ESSENTIAL TO APPRECIATE

Immaculate two bedroom semidetached property within easy walking distance of Wilmslow town centre and the train station.

Located on this popular road to the North of Wilmslow town centre and with easy reach of highly regarded local schools this property is ideal for the professional or small family.

Entrance porch, lounge with feature fireplace, spacious extended fitted dining kitchen with doors to fully enclosed rear garden with sunny patio area. Two well-proportioned bedrooms one with fitted wardrobes, bathroom with shower over bath.

Enclosed rear garden with patio and lawned area. Off road parking for up to 2 cars.
Contact Wilmslow 01625 536300 £1395.00 pcm
COUNCIL TAX C
EPC D

Directions

SK9 2QW



- EXTENDED SEMI DETACHED
- TWO BEDROOMS
- OFF ROAD PARKING
- SUNNY REAR GARDEN
- WALKING DISTANCE OF WILMSLOW
- COUNCIL TAX C
- EPC D

Postcode - SK9 2QW

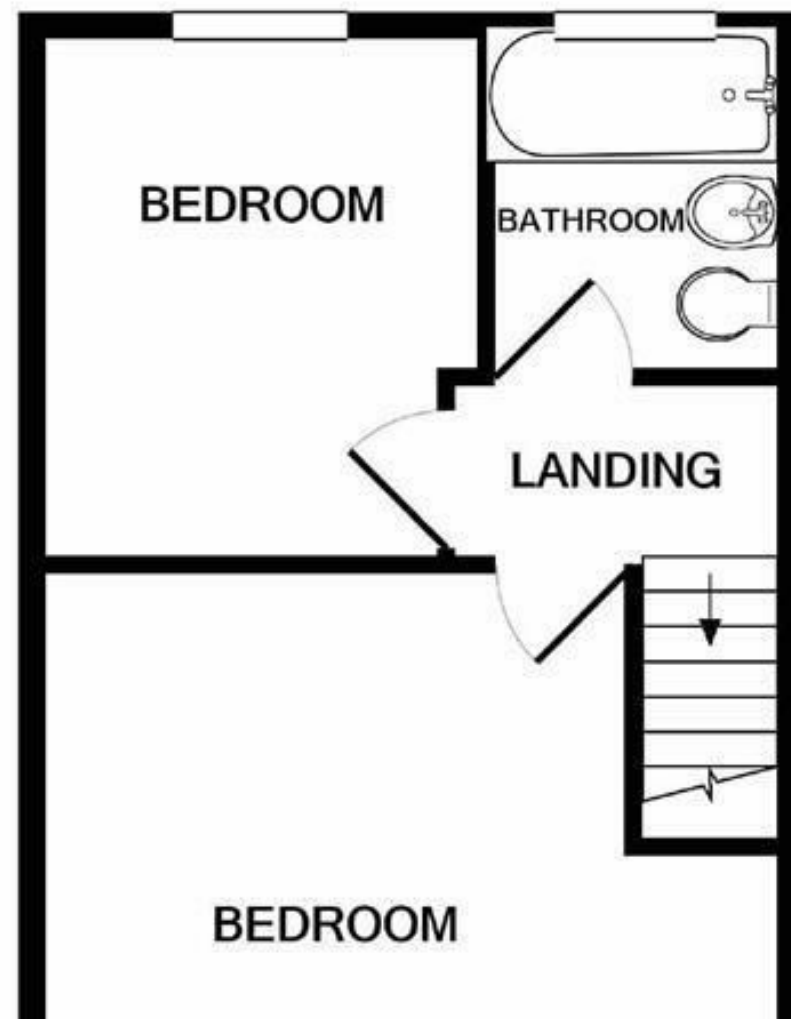
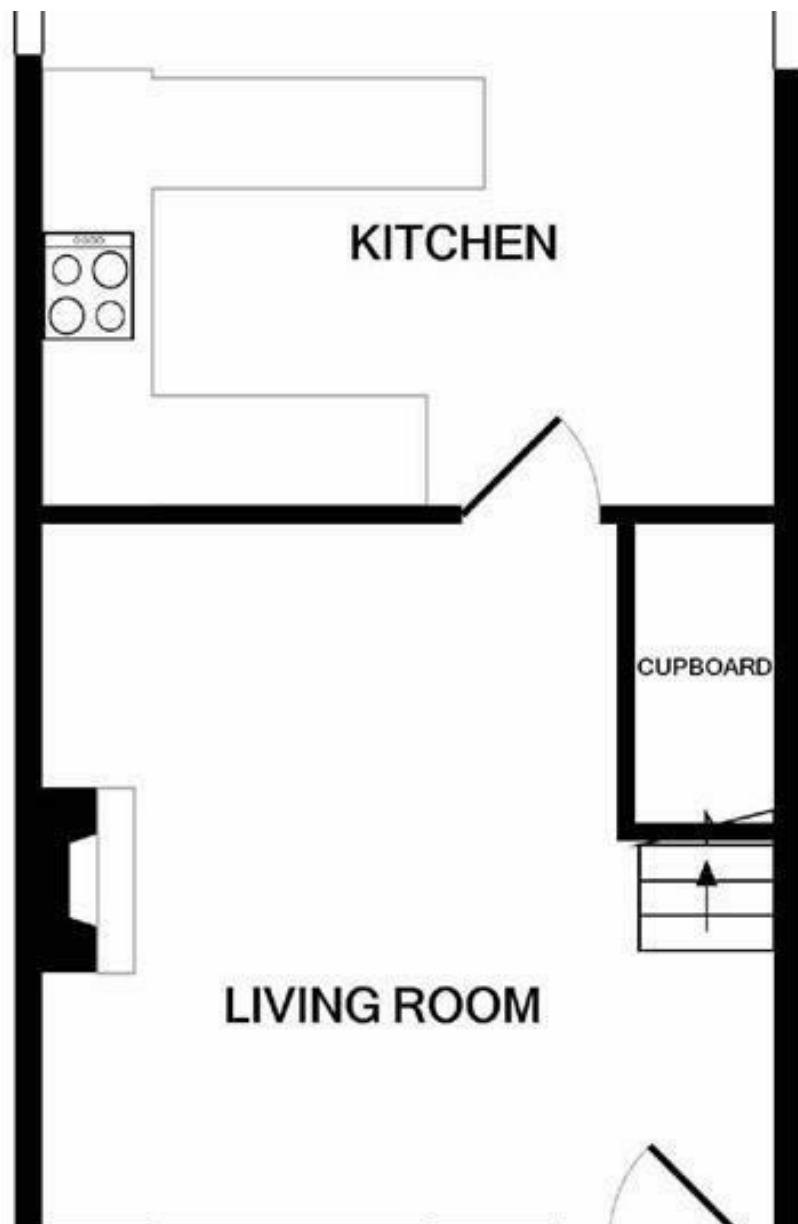
EPC Rating - D

Floor Area - sq ft

Local Authority - Cheshire East Council

Council Tax - C





These particulars are believed to be accurate but they are not guaranteed and do not form a contract. Neither Jordan Fishwick nor the vendor or lessor accept any responsibility in respect of these particulars, which are not intended to be statements or representations of fact and any intending purchaser or lessee must satisfy himself by inspection or otherwise as to the correctness of each of the statements contained in these particulars. Any floorplans on this brochure are for illustrative purposes only and are not necessarily to scale.

Offices at: Chorlton, Didsbury, Disley, Hale, Glossop, Macclesfield, Manchester Deansgate, Manchester Whitworth Street, New Mills, Sale, Wilmslow and Withington

01625 536300