



*jordan fishwick*

1 Valley Road Mossways Park, SK9 5PA  
Guide Price £199,950





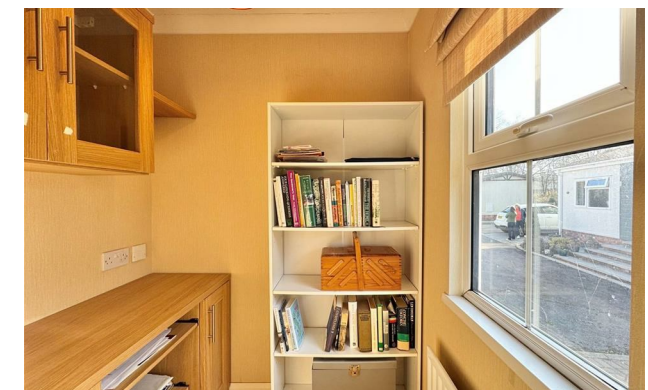
## Mossways Park Wilmslow SK9 5PA

Guide Price £199,950



(Occupiers Over 50's ) Located within a beautiful rural setting whilst still enjoying close proximity to Wilmslow, take a look at this two double bedroom property which offers spacious accommodation. Set in the quiet location of Mobberley, popular towns in the surrounding areas include Knutsford, Wilmslow and Alderley Edge offering great local amenities and attractions in and around the area.

An attractive and stylish park home which internally comprises, a private and spacious entrance porch leading to a well proportioned living space with patio doors leading to the southerly facing garden. The kitchen offers multiple integrated appliances. As well as enjoying the benefit of UPVC double glazing throughout, the home benefits from a home study and additional storage. To the front aspect a spacious living room featuring patio doors to the raised sun terrace/balcony and a feature fireplace. There are plenty of windows creating excellent natural light. Additionally the property offers two double bedrooms, one of which provides a shower room/ en suite. There is also a stylish three piece family bathroom suite. Externally, the home offers a good size low maintenance private plot with block paved driveway. Viewing recommended. NO CHAIN



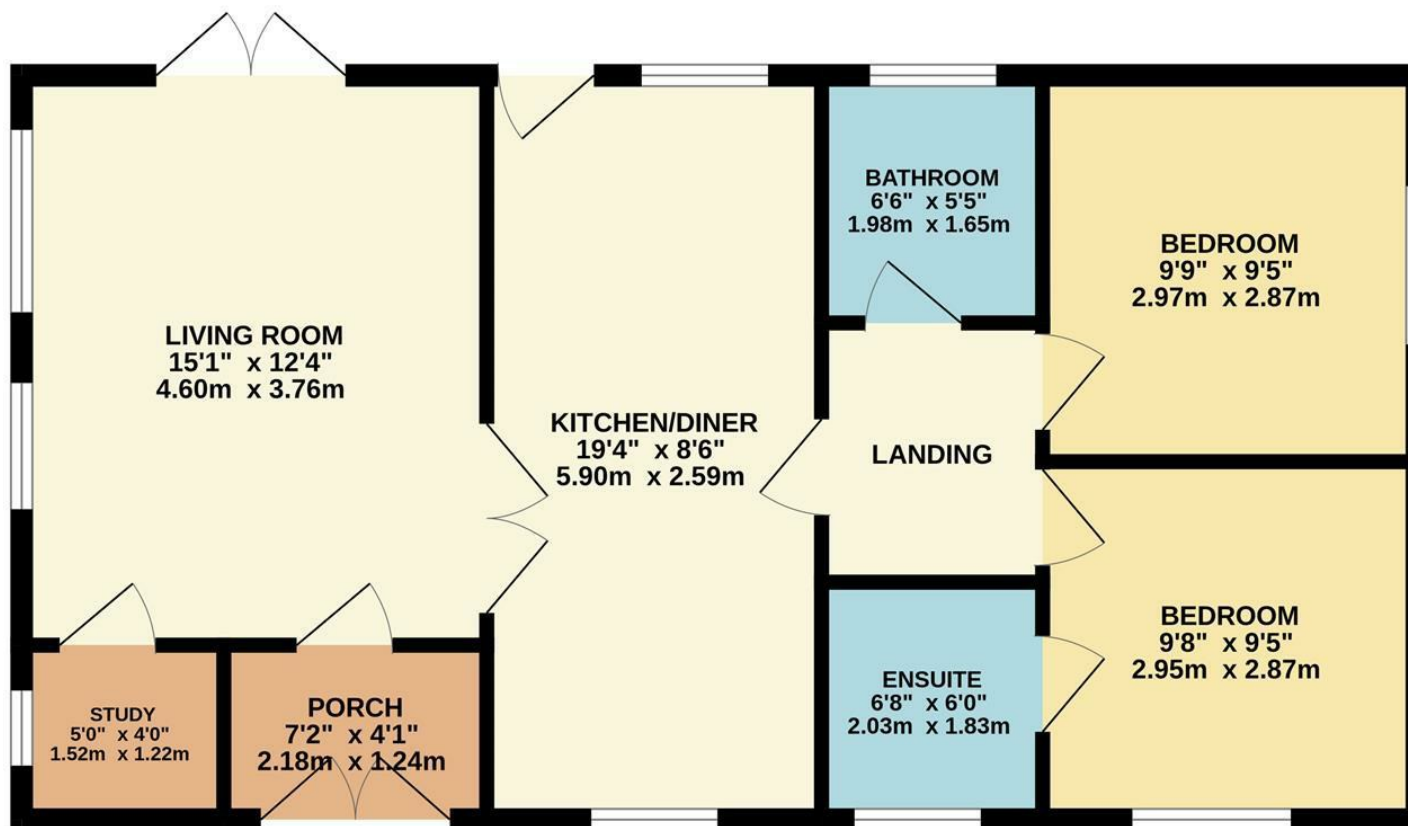






- Spacious Park Home
- Two Bedrooms
- Bathroom
- Ensuite
- Southerly facing garden aspect
- Close proximity to Wilmslow town centre
- Off road parking





Measurements are approximate. Not to scale. Illustrative purposes only  
Made with Metropix ©2025



These particulars are believed to be accurate but they are not guaranteed and do not form a contract. Neither Jordan Fishwick nor the vendor or lessor accept any responsibility in respect of these particulars, which are not intended to be statements or representations of fact and any intending purchaser or lessee must satisfy himself by inspection or otherwise as to the correctness of each of the statements contained in these particulars. Any floorplans on this brochure are for illustrative purposes only and are not necessarily to scale.

Offices at: Chorlton, Didsbury, Disley, Hale, Glossop, Macclesfield, Manchester Deansgate, Manchester Whitworth Street, New Mills, Sale, Wilmslow and Withington

36-38 Alderley Road, Wilmslow, Cheshire, SK9 1JX

**01625 532000**

[wilmslow@jordanfishwick.co.uk](mailto:wilmslow@jordanfishwick.co.uk)

[www.jordanfishwick.co.uk](http://www.jordanfishwick.co.uk)