



jordanfishwick

The Firs

£1,995 PCM



The Firs, Wilmslow, SK9

1QH

£1,995 PCM



The Property

AVAILABLE NOW FURNISHED - VIEWING ESSENTIAL

A beautifully presented first floor, two double bedroom apartment situated in the highly desirable and sought after Fulshaw Park area of Wilmslow. This spacious apartment is within walking distance of Wilmslow town centre and Wilmslow train station which offers a direct service to London Euston and Manchester city centre. Externally the accommodation comprises of meticulously maintained communal gardens with residents parking areas. This apartment benefits also from a garage which offers extra storage and somewhere secure for a vehicle. The communal hallways are immaculate, being carpeted and having contemporary glass balustrades, all of which exude quality.

Internally the apartment provides two very well proportioned and beautifully decorated double bedrooms, both featuring en-suite facilities. Separate cloakroom off the hall. The principle bedroom boasts a walk in wardrobe for extra storage and a stylish ensuite shower room., whilst bedroom two benefits from views over the communal gardens and an ensuite bathroom. A spacious open plan living and dining room features a bay window allowing natural light to flood the living space.

The open plan dining and living area is perfect for socialising and entertaining. There is a separate kitchen, featuring electric hob and oven, dishwasher, washer dryer and fridge freezer.

A separate storage cupboard houses the modern gas boiler.

Contact Wilmslow 01625 536300 £1995.00pcm

COUNCIL TAX F

EPC

Directions

SK9 1QH



Postcode - SK9 1QH

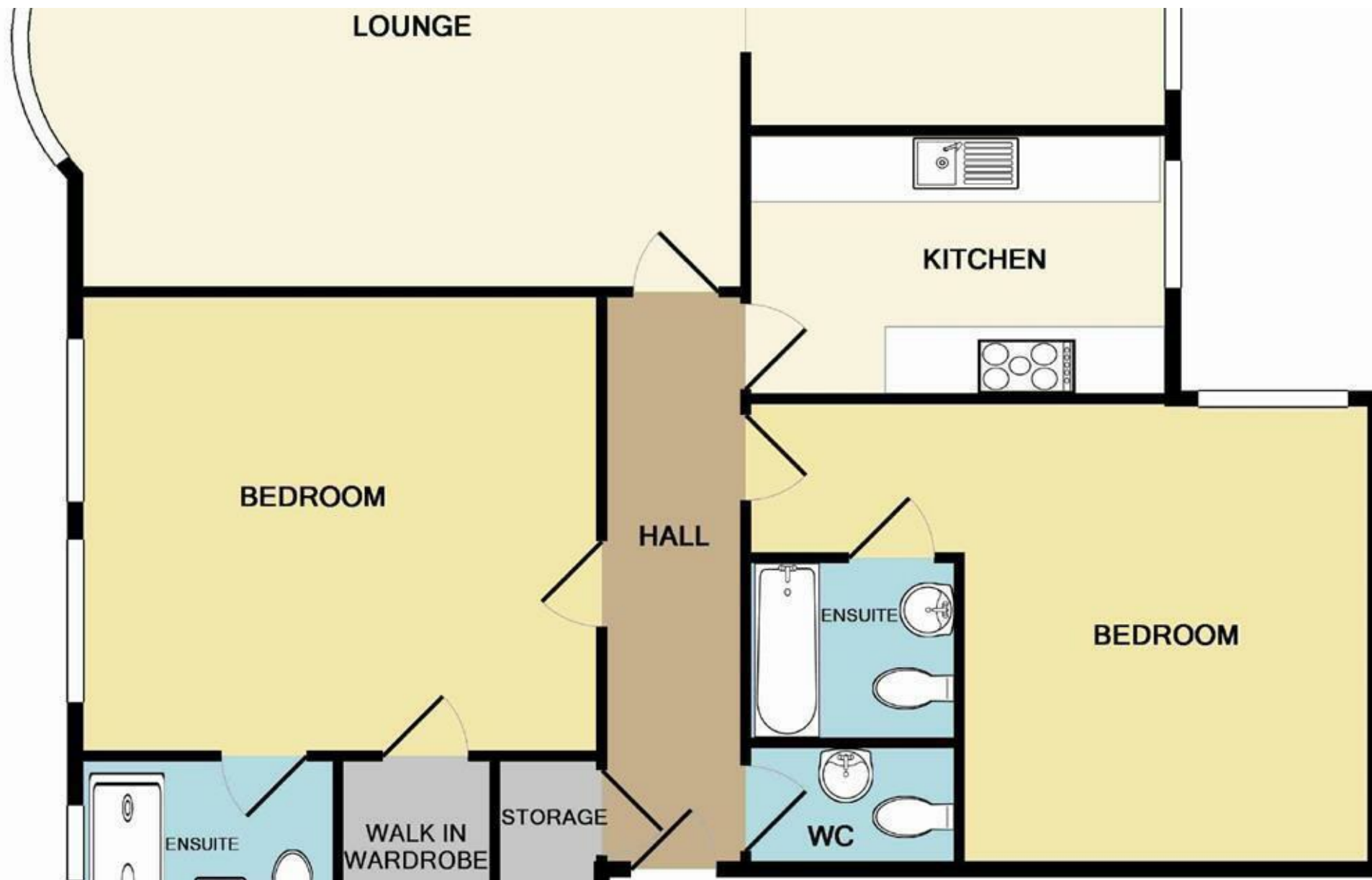
EPC Rating - D

Floor Area - sq ft

Local Authority - Cheshire East Council

Council Tax - F





These particulars are believed to be accurate but they are not guaranteed and do not form a contract. Neither Jordan Fishwick nor the vendor or lessor accept any responsibility in respect of these particulars, which are not intended to be statements or representations of fact and any intending purchaser or lessee must satisfy himself by inspection or otherwise as to the correctness of each of the statements contained in these particulars. Any floorplans on this brochure are for illustrative purposes only and are not necessarily to scale.

Offices at: Chorlton, Didsbury, Disley, Hale, Glossop, Macclesfield, Manchester Deansgate, Manchester Whitworth Street, New Mills, Sale, Wilmslow and Withington

01625 536300