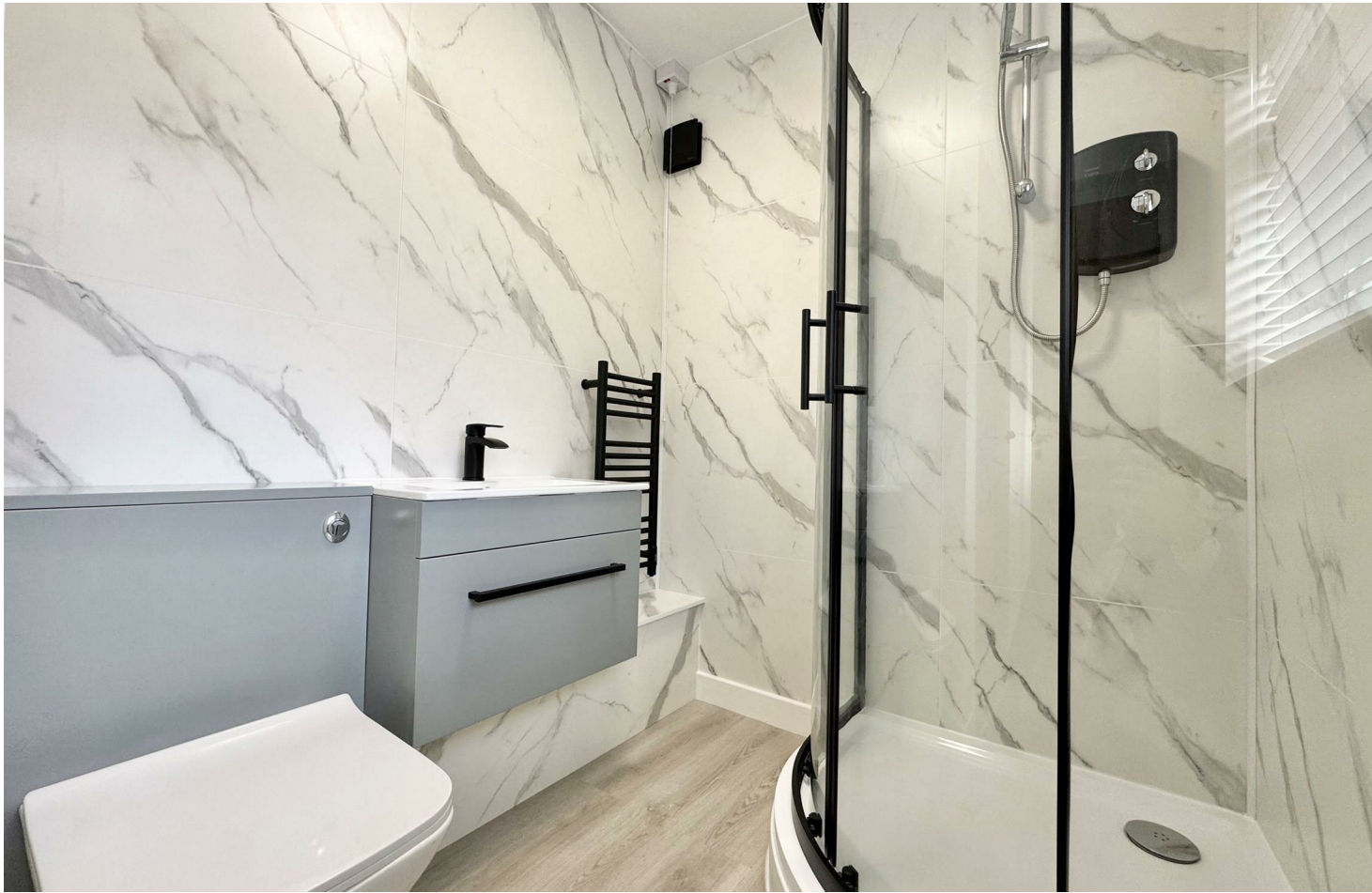




*jordan fishwick*

11 Bolleywood Court, Lacey Green, SK9  
Guide Price £165,000





## Bolleywood Court Wilmslow

Guide Price £165,000



**\*RECENTLY HAVING UNDERGONE EXTENSIVE REFURBISHMENT THROUGHOUT\*** This stunning one bedroom ground floor apartment is situated within the ever popular Bolleywood Court development. Within walking distance to Wilmslow town centre with its many amenities as well as Wilmslow train station and its direct line to London Euston/Manchester Piccadilly. The accommodation is well laid out allowing plenty of natural light to flood in and comprises in brief: Entrance hallway, living room with open aspect views over Lacey Green Park including patio doors leading out to the communal gardens, newly fitted kitchen, WC and bedroom with en-suite. The apartment benefits from UPVC double glazing throughout. Externally the property benefits from an allocated garage as well as communal parking and well tended gardens. Viewings essential in order to fully appreciate.





- Ground Floor Apartment
- One Bedroom
- Popular Development
- Close to Wilmslow town centre
- Easy Access to commuter links
- Close to Lacey Green Primary Academy School
- Open Aspect views
- Allocated Garage & Communal Parking



Energy Efficiency Rating		
	Current	Potential
Very energy efficient - lower running costs		
(92 plus) <b>A</b>		
(81-91) <b>B</b>		
(69-80) <b>C</b>		
(55-68) <b>D</b>		
(39-54) <b>E</b>	39	54
(21-38) <b>F</b>		
(1-20) <b>G</b>		
Not energy efficient - higher running costs		
England & Wales	EU Directive 2002/91/EC	

## GROUND FLOOR



Measurements are approximate. Not to scale. Illustrative purposes only.  
Made with Metropix ©2025



These particulars are believed to be accurate but they are not guaranteed and do not form a contract. Neither Jordan Fishwick nor the vendor or lessor accept any responsibility in respect of these particulars, which are not intended to be statements or representations of fact and any intending purchaser or lessee must satisfy himself by inspection or otherwise as to the correctness of each of the statements contained in these particulars. Any floorplans on this brochure are for illustrative purposes only and are not necessarily to scale.

Offices at: Chorlton, Didsbury, Disley, Hale, Glossop, Macclesfield, Manchester Deansgate, Manchester Whitworth Street, New Mills, Sale, Wilmslow and Withington

36-38 Alderley Road, Wilmslow, Cheshire, SK9 1JX

**01625 532000**

[wilmslow@jordanfishwick.co.uk](mailto:wilmslow@jordanfishwick.co.uk)

[www.jordanfishwick.co.uk](http://www.jordanfishwick.co.uk)