



jordan fishwick

3 River Street, Wilmslow, SK9 4AB
PCM £1,100 PCM



River Street Cheshire SK9 4AB

£1,100 PCM



PART FURNISHED AVAILABLE EARLY OCTOBER - AWAITING PHOTOS

This traditional period terrace cottage is situated in a quiet backwater close to Wilmslow town centre. With The Carrs country park only a short stroll away and with the train station within easy walking distance this mid terrace is sure to be a popular choice.

The property is presented well and fitted in a contemporary style whilst still maintaining some of the original features associated with a property of this period, such as stripped wood doors and period style cast iron fireplaces.

Lounge with feature fireplace, modern dining kitchen with gas hob and electric oven, dishwasher, washing machine and fridge along with door to courtyard garden and stairs to first floor.

To the first floor good sized double bedroom, single bedroom with fitted cupboard, modern bathroom with shower over bath.

On road parking and a small low maintenance courtyard garden to the rear

Contact Wilmslow 01625 536300

COUNCIL TAX C

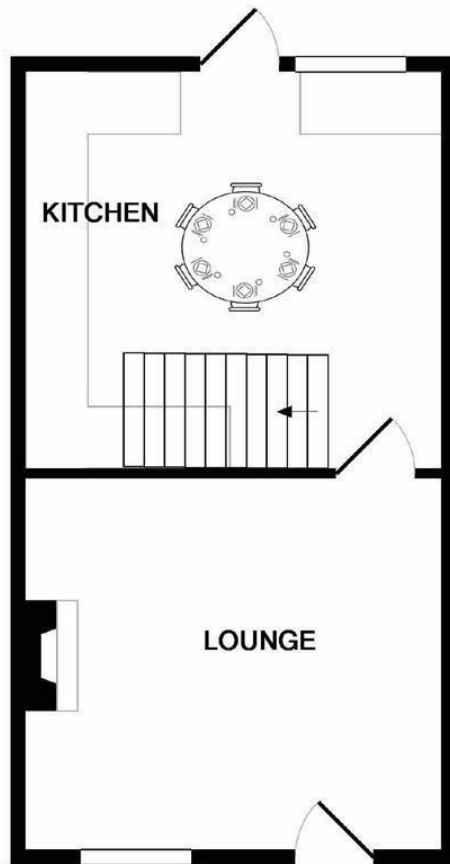
EPC D



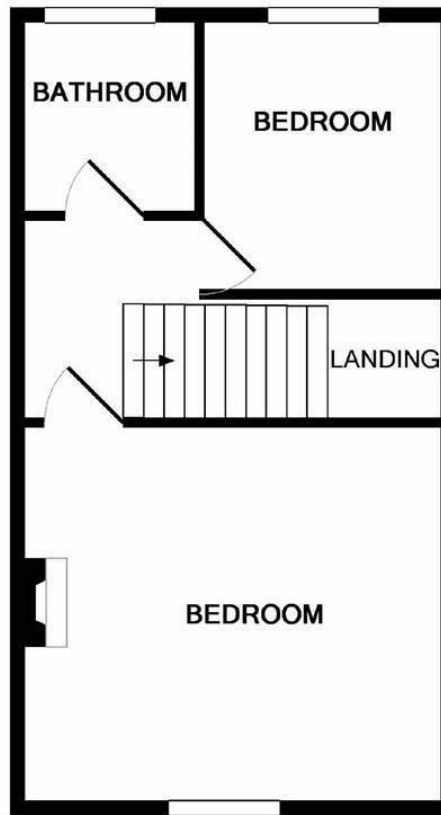
- PERIOD MID TERRACE
- CENTRAL LOCATION
- WALKING DISTANCE OF TRAIN STATION AND TOWN CENTRE
- COURTYARD GARDEN
- ON ROAD PARKING
- COUNCIL TAX C
- EPC D



Energy Efficiency Rating		
	Current	Potential
Very energy efficient - lower running costs		
(92 plus) A		90
(81-91) B		
(69-80) C	67	
(55-68) D		
(39-54) E		
(21-38) F		
(1-20) G		
Not energy efficient - higher running costs		
England & Wales	EU Directive 2002/91/EC	



GROUND FLOOR



1ST FLOOR

Whilst every attempt has been made to ensure the accuracy of the floor plan contained here, measurements of doors, windows, rooms and any other items are approximate and no responsibility is taken for any error, omission, or mis-statement. This plan is for illustrative purposes only and should be used as such by any prospective purchaser. The services, systems and appliances shown have not been tested and no guarantee as to their operability or efficiency can be given
 Made with Metropix ©2018



These particulars are believed to be accurate but they are not guaranteed and do not form a contract. Neither Jordan Fishwick nor the vendor or lessor accept any responsibility in respect of these particulars, which are not intended to be statements or representations of fact and any intending purchaser or lessee must satisfy himself by inspection or otherwise as to the correctness of each of the statements contained in these particulars. Any floorplans on this brochure are for illustrative purposes only and are not necessarily to scale.

Offices at: Chorlton, Didsbury, Disley, Hale, Glossop, Macclesfield, Manchester Deansgate, Manchester Whitworth Street, New Mills, Sale, Wilmslow and Withington

01625 536300

wilmslow@jordanfishwick.co.uk
 www.jordanfishwick.co.uk