



jordan fishwick

Apt. 16 Delamere Road, SK9 3QA
Guide Price £179,950

Delamere Road Handforth SK9 3QA

Guide Price £179,950




IDEAL INVESTMENT. This wonderful and well proportioned two **DOUBLE** bedroom apartment is situated just a short stroll from Handforth centre and the train station. The apartment is set on the first floor and boasts contemporary accommodation throughout. In brief the accommodation comprises: communal entrance, private entrance hallway, living room with access to southerly facing **BALCONY**, modern kitchen diner with integrated appliances, inner hall, two great size double bedrooms and a white three piece bathroom suite. (**GAS CENTRAL HEATING**)





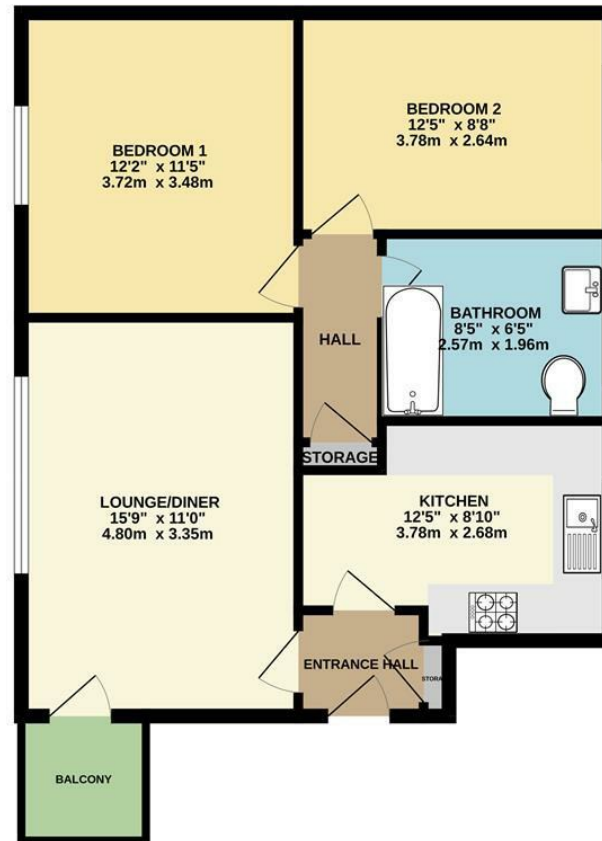
- 2 Double Bedrooms
- Ideal Investment
- Contemporary Accommodation
- First Floor Apartment
- Storage Space
- Walking Distance To Amenities
- Close Proximity To Train Station



Energy Efficiency Rating		
	Current	Potential
Very energy efficient - lower running costs		
(92 plus) A		
(81-91) B	78	78
(69-80) C		
(55-68) D		
(39-54) E		
(21-38) F		
(1-20) G		
Not energy efficient - higher running costs		
England & Wales	EU Directive 2002/91/EC 	



GROUND FLOOR



Measurements are approximate. Not to scale. Illustrative purposes only.
Made with Metropix ©2024



These particulars are believed to be accurate but they are not guaranteed and do not form a contract. Neither Jordan Fishwick nor the vendor or lessor accept any responsibility in respect of these particulars, which are not intended to be statements or representations of fact and any intending purchaser or lessee must satisfy himself by inspection or otherwise as to the correctness of each of the statements contained in these particulars. Any floorplans on this brochure are for illustrative purposes only and are not necessarily to scale.

Offices at: Chorlton, Didsbury, Disley, Hale, Glossop, Macclesfield, Manchester Deansgate, Manchester Whitworth Street, New Mills, Sale, Wilmslow and Withington

36-38 Alderley Road, Wilmslow, Cheshire, SK9 1JX

01625 532000

wilmslow@jordanfishwick.co.uk

www.jordanfishwick.co.uk