



*jordan fishwick*

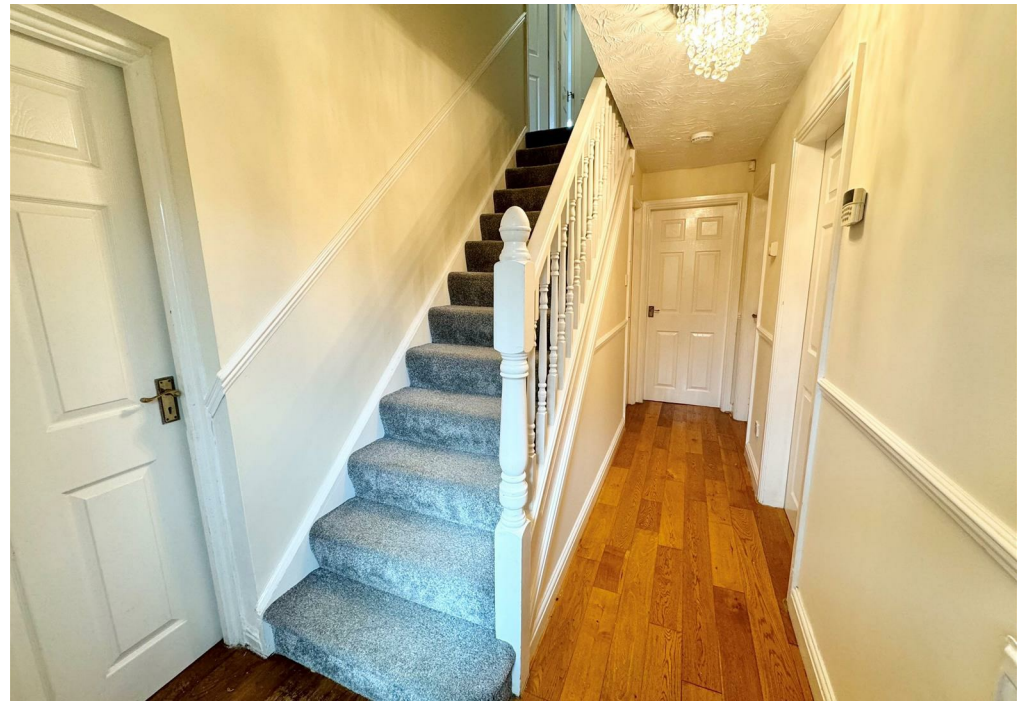
4 Regency Gardens, SK8 6SX  
Guide Price £499,950

# Regency Gardens CHEADLE HULME

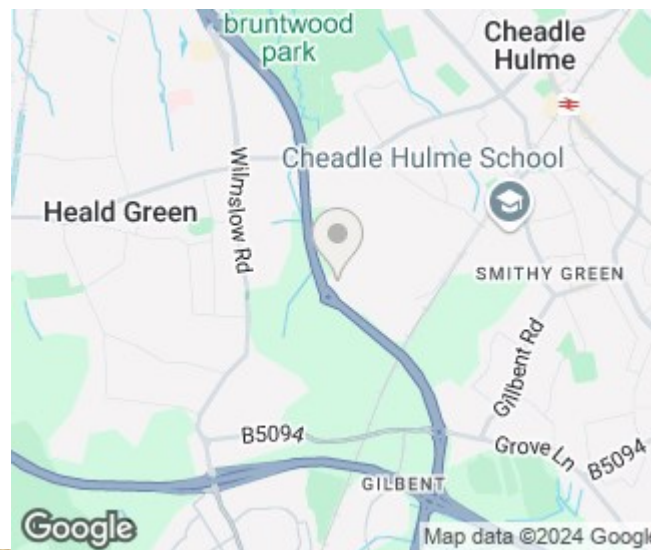
Guide Price £499,950




This charming four bedroom detached property is located on a quiet cul de sac on this modern estate close to the A34 and within reach of Manchester International Airport, Wilmslow, Alderley Edge and the motorway networks. Comprising in brief: entrance hall with access to converted garage, downstairs WC, lounge with feature fireplace and doors leading to conservatory with doors to rear garden, second reception / family room, modern fitted kitchen with gas hob and electric oven, dishwasher, space for washing machine and fridge freezer. To the first floor master bedroom with en suite shower room, three further double bedrooms. The property also benefits from a family bathroom with shower over bath. Off road parking for multiple vehicles, converted garage, sunny rear garden with patio area. VIEWING HIGHLY RECOMMENDED.



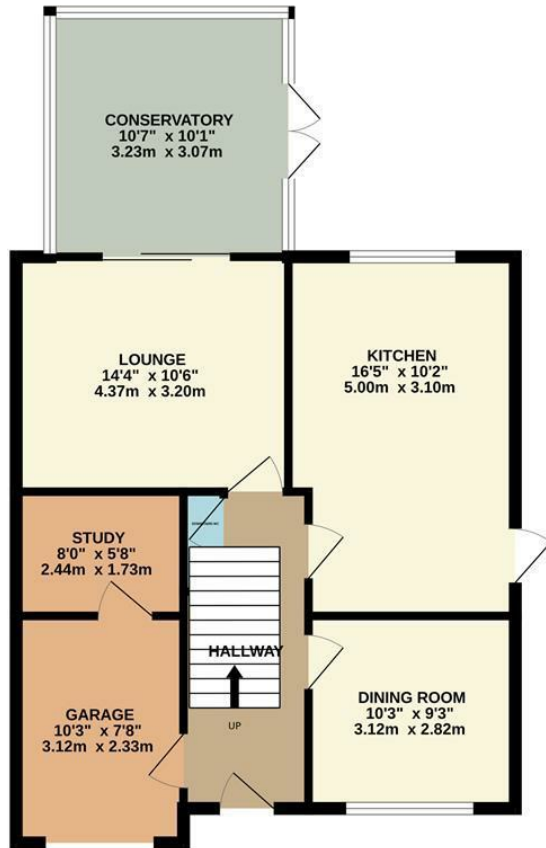
- THREE RECEPTIONS ROOMS
- POPULAR LOCATION
- OFF ROAD PARKING
- CONVERTED GARAGE
- ENCLOSED REAR GARDEN
- FOUR BEDROOMS
- QUIET CUL-DE-SAC
- EXCELLENT TRANSPORT LINKS



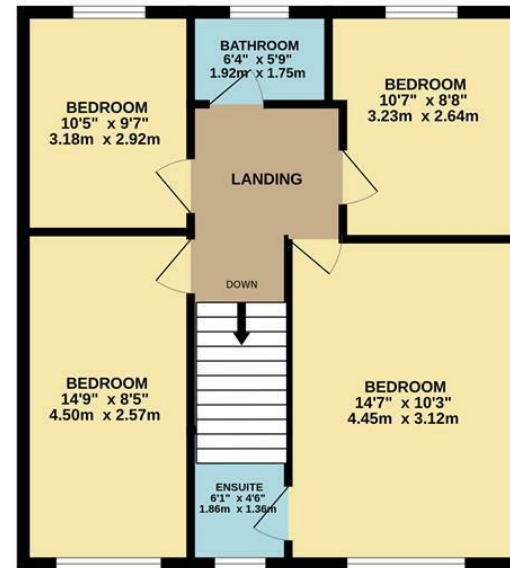
Energy Efficiency Rating		
	Current	Potential
Very energy efficient - lower running costs		
(92 plus) <b>A</b>		
(81-91) <b>B</b>		<b>82</b>
(69-80) <b>C</b>	<b>68</b>	
(55-68) <b>D</b>		
(39-54) <b>E</b>		
(21-38) <b>F</b>		
(1-20) <b>G</b>		
Not energy efficient - higher running costs		
<b>England &amp; Wales</b>	EU Directive 2002/91/EC 	



GROUND FLOOR



1ST FLOOR



Measurements are approximate. Not to scale. Illustrative purposes only.  
Made with Metropix ©2024



These particulars are believed to be accurate but they are not guaranteed and do not form a contract. Neither Jordan Fishwick nor the vendor or lessor accept any responsibility in respect of these particulars, which are not intended to be statements or representations of fact and any intending purchaser or lessee must satisfy himself by inspection or otherwise as to the correctness of each of the statements contained in these particulars. Any floorplans on this brochure are for illustrative purposes only and are not necessarily to scale.

Offices at: Chorlton, Didsbury, Disley, Hale, Glossop, Macclesfield, Manchester Deansgate, Manchester Whitworth Street, New Mills, Sale, Wilmslow and Withington

36-38 Alderley Road, Wilmslow, Cheshire, SK9 1JX

01625 532000

wilmslow@jordanfishwick.co.uk

www.jordanfishwick.co.uk