

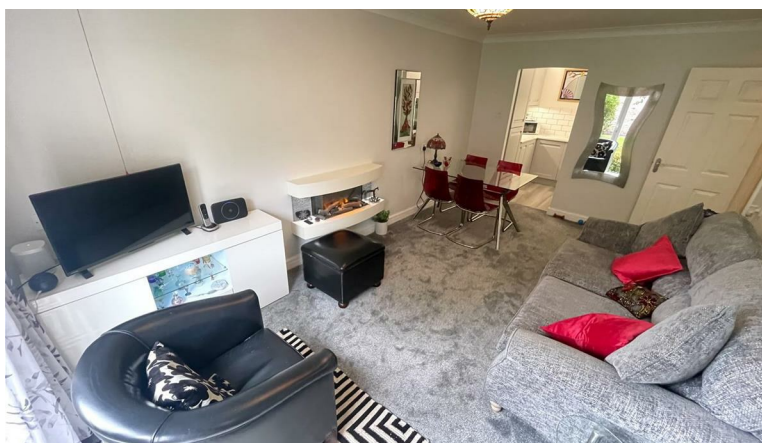


jordan fishwick

5 LYNWOOD VICTORIA ROAD WILMSLOW SK9 5HN
Guide Price £129,950

5 LYNWOOD VICTORIA ROAD WILMSLOW SK9 5HN

Jordan Fishwick are pleased to offer this beautifully presented apartment, located in the heart of Wilmslow. This retirement (Over 60's) apartment offers excellent accommodation for those wanting to be a stone's throw away from local amenities including a range of shops, general services and restaurants. Lynwood is linked via a glass atrium to its sister building Beechfield and the combined developments have two communal lounges and a range of organized activities. The development also offers maintained communal garden spaces and on-site laundry facilities. The apartment itself, comprises a private entrance hallway, walk-in shower room and generously sized bedroom, which has been modernised recently with fitted wardrobes, desk and storage space. Furthermore, the beautifully presented kitchen offers modern style wall and base mounted units, marble effect roll top worktops and a range of integrated appliances including fridge and freezer and dishwasher. Adjoining to the kitchen, the living / dining room offers an excellent socialising space and is complemented by a wall mounted feature fire and UPVC double glazed french doors to the rear aspect, which overlooks and provides access to the communal garden space. Viewings Essential.



- Retirement Property
- Over 60's
- Beautifully Presented Accommodation
- Central Wilmslow Location
- Parking, Subject To Availability
- Recently Modernised Kitchen
- UPVC Double Glazed
- Well Maintained Communal Areas

Energy Efficiency Rating		Environmental Impact (CO ₂) Rating			
Very energy efficient - lower running costs	Current	Potential	Very environmentally friendly - lower CO ₂ emissions	Current	Potential
(92 plus) A			(92 plus) A		
(81-91) B			(81-91) B		
(69-80) C			(69-80) C		
(55-68) D			(55-68) D		
(39-54) E			(39-54) E		
(21-38) F			(21-38) F		
(1-20) G			(1-20) G		
Not energy efficient - higher running costs			Not environmentally friendly - higher CO ₂ emissions		
England & Wales		EU Directive 2002/91/EC	England & Wales		EU Directive 2002/91/EC