



*Jordan fishwick*

Lilac Cottage Morley Green Road, SK9  
Guide Price £599,950

# Morley Green Road Wilmslow

Guide Price £599,950




Located within an idyllic semi rural setting whilst still enjoying close proximity to Wilmslow, this stunning Period three double bedroom property offers stylish and extended accommodation. This beautifully presented property of character, "Lilac Cottage" offers spacious accommodation throughout, boasting a spectacular open plan kitchen/dining and family living space to the rear. This extended sociable space capitalises on the open aspect and showcases the countryside views to the rear, whilst featuring a quality fitted two toned kitchen with sizable central island breakfast bar and herringbone style flooring throughout. The bi fold doors enable access to the rear garden with the roof lantern creating masses of natural light to enter this space. Additionally, to the ground floor there are two separate reception rooms both with wood burning stoves and a re-fitted and stylish downstairs shower room. To the first floor there are three well proportioned double bedrooms with the principal bedroom having built in wardrobes. Furthermore there is a modern and contemporary bathroom. Externally to the rear, there is a raised patio with steps leading to the rear lawned garden. There is an also a large decked patio which enjoys the rural setting. The garden also benefits from a large shed and a feature pond. There is a parking area to the rear of the property offering ample space for vehicles. The property has had planning permission granted for a first floor extension to create a fourth bedroom with balcony.





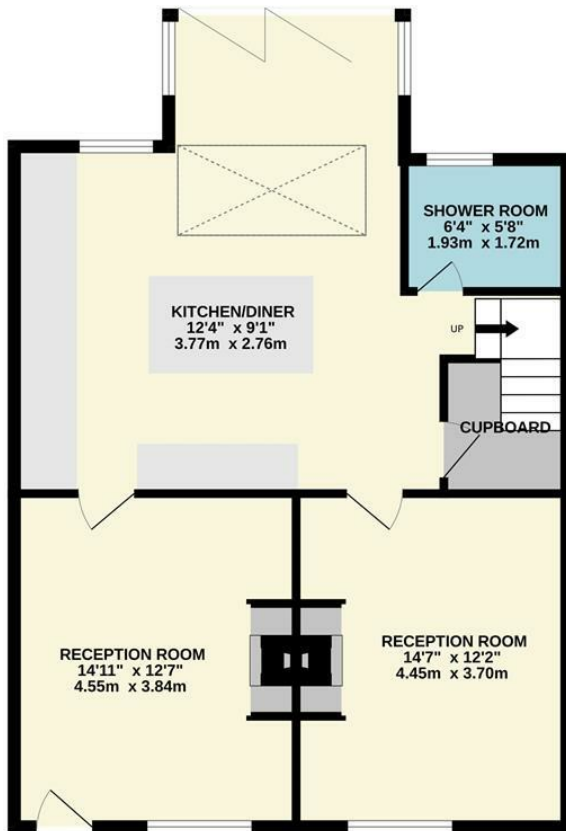
- Semi Rural Setting
- Stylish and Extended
- Semi Detached
- Three double bedrooms
- Stunning Kitchen Diner
- Two bathrooms
- Landscaped Garden
- Parking To Rear



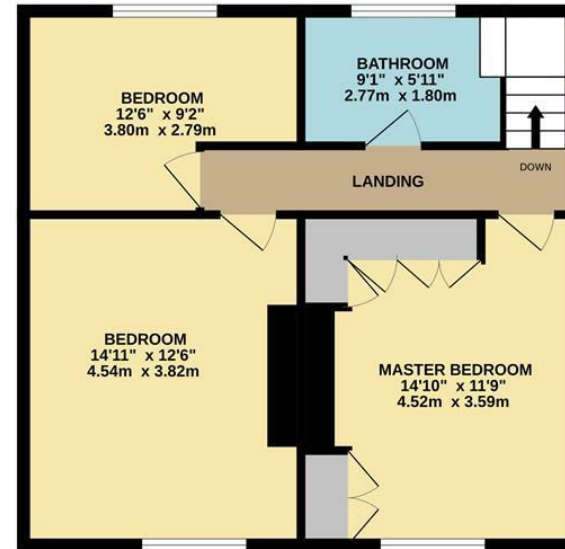
Energy Efficiency Rating		
	Current	Potential
Very energy efficient - lower running costs		
(92 plus) <b>A</b>		
(81-91) <b>B</b>		
(69-80) <b>C</b>		<b>73</b>
(55-68) <b>D</b>	<b>62</b>	
(39-54) <b>E</b>		
(21-38) <b>F</b>		
(1-20) <b>G</b>		
Not energy efficient - higher running costs		
<b>England &amp; Wales</b>	EU Directive 2002/91/EC 	



GROUND FLOOR  
804 sq.ft. (74.7 sq.m.) approx.



1ST FLOOR  
576 sq.ft. (53.5 sq.m.) approx.



TOTAL FLOOR AREA: 1380 sq.ft. (128.2 sq.m.) approx.  
Measurements are approximate. Not to scale. Illustrative purposes only  
Made with Metropix ©2024



These particulars are believed to be accurate but they are not guaranteed and do not form a contract. Neither Jordan Fishwick nor the vendor or lessor accept any responsibility in respect of these particulars, which are not intended to be statements or representations of fact and any intending purchaser or lessee must satisfy himself by inspection or otherwise as to the correctness of each of the statements contained in these particulars. Any floorplans on this brochure are for illustrative purposes only and are not necessarily to scale.

Offices at: Chorlton, Didsbury, Disley, Hale, Glossop, Macclesfield, Manchester Deansgate, Manchester Whitworth Street, New Mills, Sale, Wilmslow and Withington

36-38 Alderley Road, Wilmslow, Cheshire, SK9 1JX  
**01625 532000**

wilmslow@jordanfishwick.co.uk  
www.jordanfishwick.co.uk