



Jordan fishwick

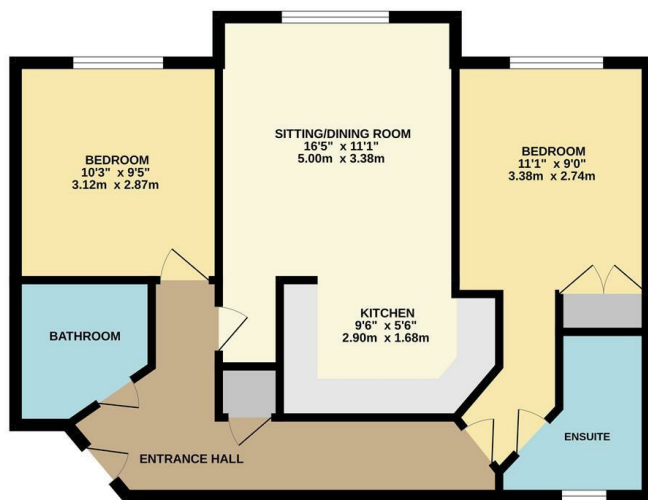
4 WILMSLOW COURT SAGARS ROAD HANDFORTH SK9 3TW
Guide Price £189,950

4 WILMSLOW COURT SAGARS ROAD HANDFORTH SK9 3TW

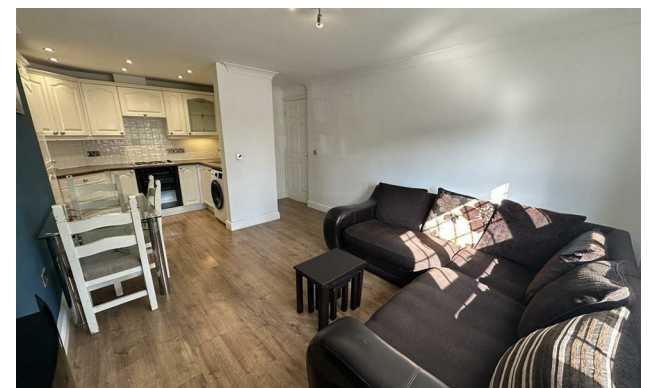
Jordan Fishwick are pleased to present this fabulous sized two bedroom two bathroom ground floor apartment located in a central Handforth location. Handforth Village offers a wide range of amenities such as local shopping facilities, bars and restaurants. Wilmslow Court is also in a great position for many transport links with Manchester Airport being less than a 20 minute drive away and Wilmslow train station offering direct train lines to Manchester Piccadilly and London Euston. In brief the property comprises a communal entrance hallway, leading into a spacious private hallway, two double bedrooms one of which benefits from a three piece en-suite and a large kitchen/living area which creates a sociable atmosphere. This property is ideal for first time buyers or buy to let investors. No Vendor Chain.



GROUND FLOOR



Measurements are approximate. Not to scale. Illustrative purposes only. Made with Metrage 12024



- NO CHAIN
- Ground Floor
- En-Suite Bathroom
- Handforth Village Location
- Two Double Bedrooms
- Built In Storage
- Open Plan Kitchen/Living Area
- Great Transport Links

Energy Efficiency Rating		Environmental Impact (CO ₂) Rating			
Very energy efficient - lower running costs	Current	Potential	Very environmentally friendly - lower CO ₂ emissions	Current	Potential
(92 plus) A			(92 plus) A		
(81-91) B			(81-91) B		
(69-80) C			(69-80) C		
(55-68) D			(55-68) D		
(39-54) E			(39-54) E		
(21-38) F			(21-38) F		
(1-20) G			(1-20) G		
Not energy efficient - higher running costs			Not environmentally friendly - higher CO ₂ emissions		
England & Wales		EU Directive 2002/91/EC	England & Wales		EU Directive 2002/91/EC

36-38 Alderley Road, Wilmslow, Cheshire, SK9 1JX

01625 532000

wilmslow@jordanfishwick.co.uk
www.jordanfishwick.co.uk