



Jordan fishwick

49 KINGSBURY DRIVE WILMSLOW SK9 2GU
PCM £2,500 PCM

49 KINGSBURY DRIVE WILMSLOW SK9 2GU

AVAILABLE END SEPTEMBER PART FURNISHED - VIEWING ESSENTIAL TO APPRECIATE

This immaculate four double bedroom detached is located on this popular estate to the North of Wilmslow town centre.

Benefitting from excellent access to the A34, Manchester International Airport, Wilmslow town centre and within easy walking distance of Wilmslow train station make this property ideal for the growing family.

Having been tastefully upgraded and decorated throughout the property also benefits from off road parking for 2 cars and a single garage.

Entrance hall with access to garage, downstairs cloakroom, lounge with feature gas fireplace and doors leading through to spacious fully fitted dining kitchen with utility and doors to conservatory leading to sunny enclosed rear garden. To the first floor master bedroom with fitted wardrobes and en-suite shower room, three further double bedrooms one with fitted wardrobes, family bathroom with shower over bath.

Contact Wilmslow 01625 536300 £2500.00pcm

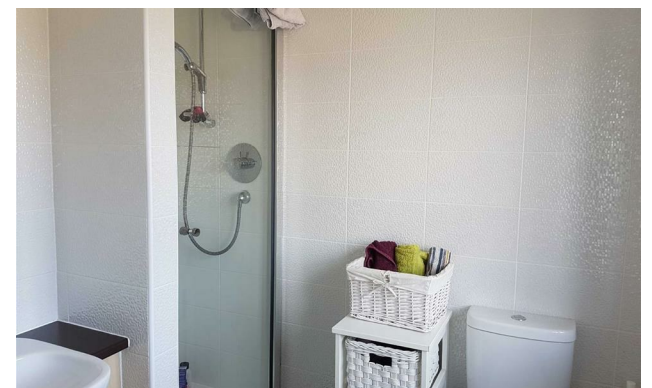
COUNCIL TAX F

EPCC



Measurements are approximate. Not to scale. Illustrative purposes only. Made with Metropix ©2020

- DETACHED
- FOUR BEDROOMS
- TWO BATHROOMS
- WALKING DISTANCE OF WILMSLOW AND TRAIN STATION
- GARAGE
- OFF ROAD PARKING
- COUNCIL TAX F
- EPC C



Energy Efficiency Rating		Environmental Impact (CO ₂) Rating			
Very energy efficient - lower running costs	Current	Potential	Very environmentally friendly - lower CO ₂ emissions	Current	Potential
(92 plus) A			(92 plus) A		
(81-91) B			(81-91) B		
(69-80) C			(69-80) C		
(55-68) D			(55-68) D		
(39-54) E			(39-54) E		
(21-38) F			(21-38) F		
(1-20) G			(1-20) G		
Not energy efficient - higher running costs			Not environmentally friendly - higher CO ₂ emissions		
England & Wales		EU Directive 2002/91/EC	England & Wales		EU Directive 2002/91/EC
		76			86