



jordan fishwick

14 Dean Drive, SK9 2EP
Guide Price £429,950



Dean Drive Wilmslow SK9 2EP

Guide Price £429,950




NO CHAIN. This traditional three bedroom semi detached property is located on this popular road to the North of Wilmslow town centre and is only a short drive to the A34 bypass, Manchester International Airport and the motorway networks. Offering off road parking for a number of vehicles along with a garage, good sized rear garden and a spacious interior make this property a great family home. The property internally comprises an entrance hallway, lounge and dining room with dividing double doors offering versatile accommodation. Additionally there is a large kitchen diner with views over the rear garden. To the first floor there are two double bedrooms and a good sized single bedroom, a bathroom with shower and separate WC. Externally there is a well presented mature garden with two patio areas and a detached sectional garage which is ideal for secure storage. The property is double glazed and gas central heated.



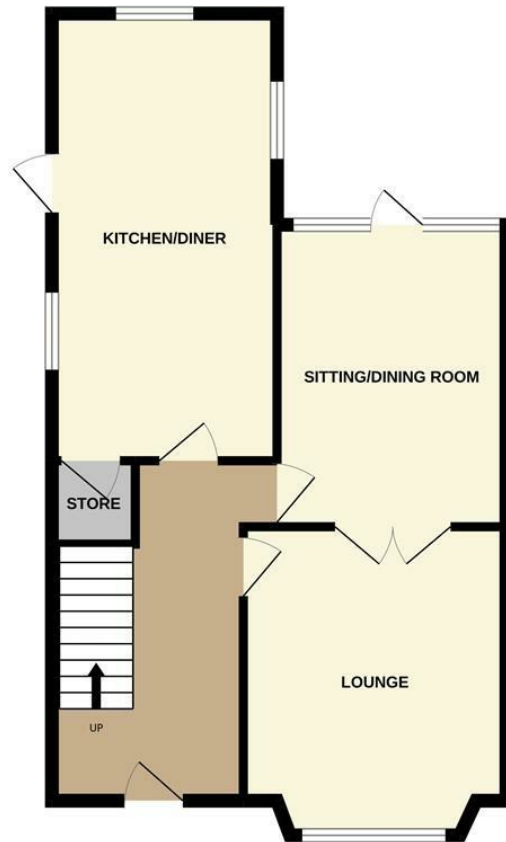
- SEMI DETACHED
- THREE BEDROOMS
- THREE RECEPTION ROOMS
- GARAGE
- ENCLOSED REAR GARDEN
- OFF ROAD PARKING
- NO CHAIN



Energy Efficiency Rating		
	Current	Potential
Very energy efficient - lower running costs		
(92 plus) A		
(81-91) B		
(69-80) C		78
(55-68) D	60	
(39-54) E		
(21-38) F		
(1-20) G		
Not energy efficient - higher running costs		
England & Wales		EU Directive 2002/91/EC 



GROUND FLOOR



1ST FLOOR



Measurements are approximate. Not to scale. Illustrative purposes only.
Made with Metropix ©2022



These particulars are believed to be accurate but they are not guaranteed and do not form a contract. Neither Jordan Fishwick nor the vendor or lessor accept any responsibility in respect of these particulars, which are not intended to be statements or representations of fact and any intending purchaser or lessee must satisfy himself by inspection or otherwise as to the correctness of each of the statements contained in these particulars. Any floorplans on this brochure are for illustrative purposes only and are not necessarily to scale.

Offices at: Chorlton, Didsbury, Disley, Hale, Glossop, Macclesfield, Manchester Deansgate, Manchester Whitworth Street, New Mills, Sale, Wilmslow and Withington

36-38 Alderley Road, Wilmslow, Cheshire, SK9 1JX

01625 532000

wilmslow@jordanfishwick.co.uk

www.jordanfishwick.co.uk