



*jordan fishwick*

11 Finsbury Way, Handforth, SK9 3AQ  
PCM £1,650 PCM



## Finsbury Way Wilmslow SK9 3AQ

£1,650 PCM



### AVAILABLE LATE AUGUST PART FURNISHED

Modern, spacious and well presented executive town house set over three floors offering attractive accommodation in a cul de sac location, with three good size bedrooms, en suite to master bedroom and off road parking for 2 cars.

Entrance hall with storage, downstairs cloakroom/wc, breakfast kitchen with gas hob and electric oven, washing machine, dishwasher and fridge freezer, lounge leading to conservatory with doors to fully enclosed rear garden.

To the first floor there are two bedrooms and a white four piece family bathroom with separate shower cubicle, whilst to the second floor there is a great size master bedroom with fitted wardrobes and en-suite bathroom.

Outside there are gardens to the front and rear and off road parking for two cars.

Contact Wilmslow 01625 536300 £1650.00pcm


COUNCIL TAX E

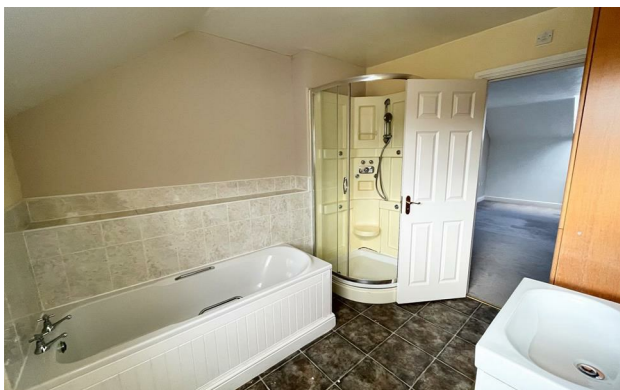
EPC C



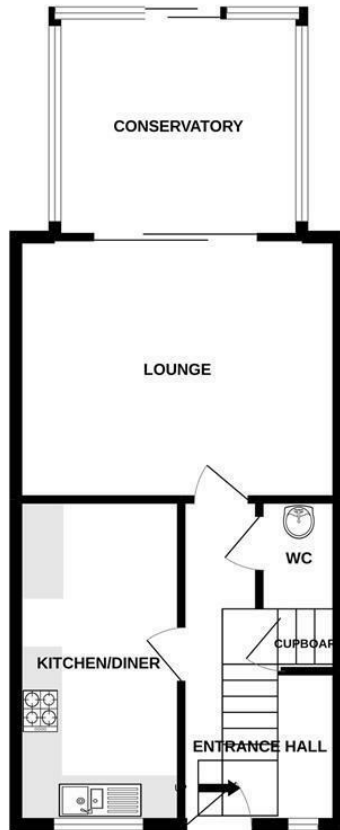
- TOWNHOUSE
- THREE BEDROOMS
- CONSERVATORY
- CUL DE SAC LOCATION
- WALKING DISTANCE OF STATION
- TWO OFF ROAD PARKING
- COUNCIL TAX E
- EPC C



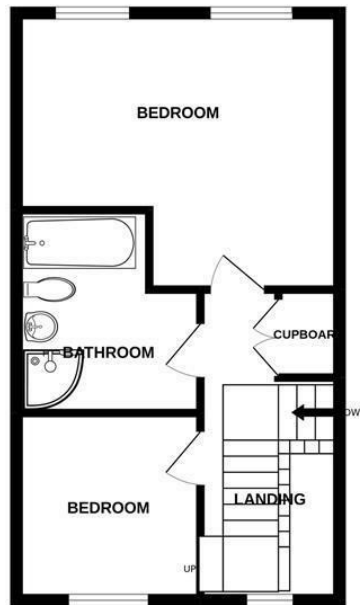
Energy Efficiency Rating		
	Current	Potential
Very energy efficient - lower running costs		
(92 plus) <b>A</b>		
(81-91) <b>B</b>		
(69-80) <b>C</b>	<b>74</b>	<b>78</b>
(55-68) <b>D</b>		
(39-54) <b>E</b>		
(21-38) <b>F</b>		
(1-20) <b>G</b>		
Not energy efficient - higher running costs		
<b>England &amp; Wales</b>	EU Directive 2002/91/EC 	



GROUND FLOOR



1ST FLOOR



2ND FLOOR



Measurements are approximate. Not to scale. Illustrative purposes only  
 Made with Metropix ©2022



These particulars are believed to be accurate but they are not guaranteed and do not form a contract. Neither Jordan Fishwick nor the vendor or lessor accept any responsibility in respect of these particulars, which are not intended to be statements or representations of fact and any intending purchaser or lessee must satisfy himself by inspection or otherwise as to the correctness of each of the statements contained in these particulars. Any floorplans on this brochure are for illustrative purposes only and are not necessarily to scale.

Offices at: Chorlton, Didsbury, Disley, Hale, Glossop, Macclesfield, Manchester Deansgate, Manchester Whitworth Street, New Mills, Sale, Wilmslow and Withington

01625 536300

wilmslow@jordanfishwick.co.uk  
 www.jordanfishwick.co.uk