



*jordan fishwick*

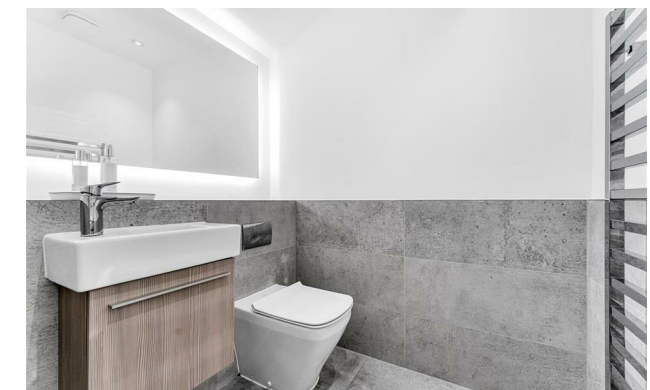
19 Vale Crescent, SK10 4LU  
Reduced To £1,050,000

# Vale Crescent Alderley Park SK10 4LU

Reduced To £1,050,000



Constructed by the renowned developer PH Homes, and upgraded throughout by the current owners, this superb detached family home on the sought after Alderley Park development is offered for sale with no onward chain, benefits from having planning consent for a garden room extension to the rear. The Alderley Park development is surrounded by majestic parkland and has an array of facilities such as The Churchill Tree Pub and Restaurant, Gym, Cricket Ground and access to miles and miles of walks, including to 'The Edge'. Renowned for its family friendly facilities, there's 24 hour security on the site, providing that peace of mind wanted in today's hectic world.





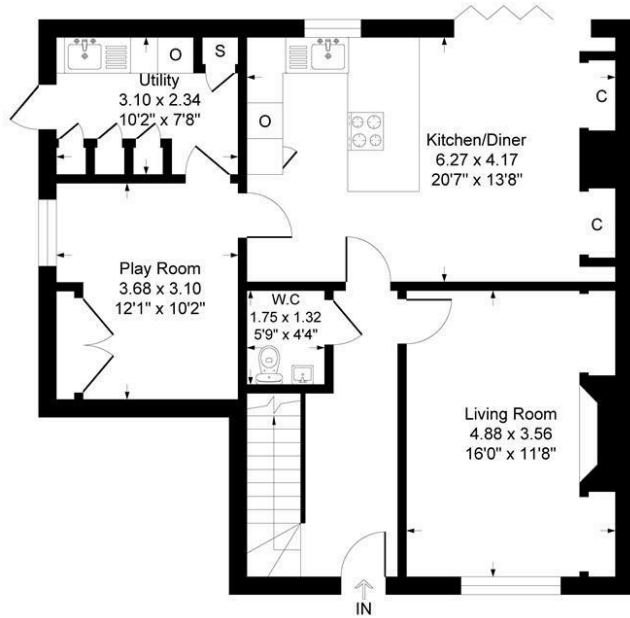
- Four Bedroom Detached Family Home extending to 2,101 sq ft
- Stunning Top Floor Master Suite
- Fitted Dressing Room and en suite
- Upgraded Accommodation
- Landscaped rear garden with woodland aspect
- Sought after Alderley Park development
- Garage
- Off road parking



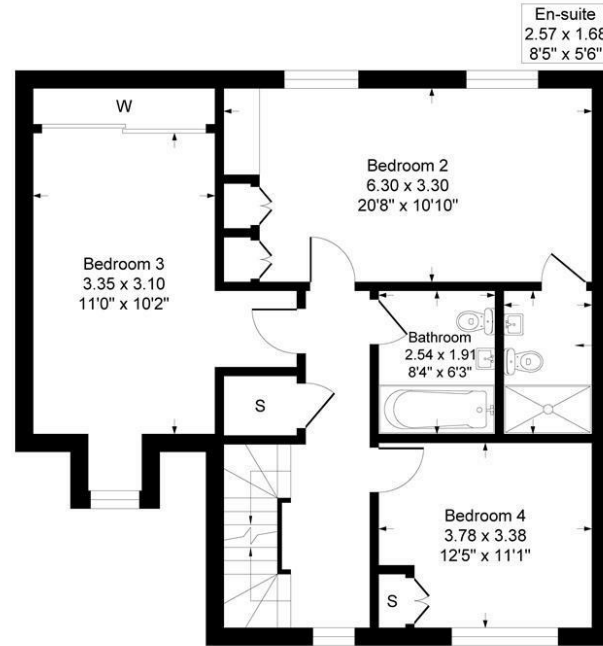
Energy Efficiency Rating		
	Current	Potential
Very energy efficient - lower running costs		
(92 plus) <b>A</b>		<b>91</b>
(81-91) <b>B</b>	<b>84</b>	
(69-80) <b>C</b>		
(55-68) <b>D</b>		
(39-54) <b>E</b>		
(21-38) <b>F</b>		
(1-20) <b>G</b>		
Not energy efficient - higher running costs		
<b>England &amp; Wales</b>	EU Directive 2002/91/EC	



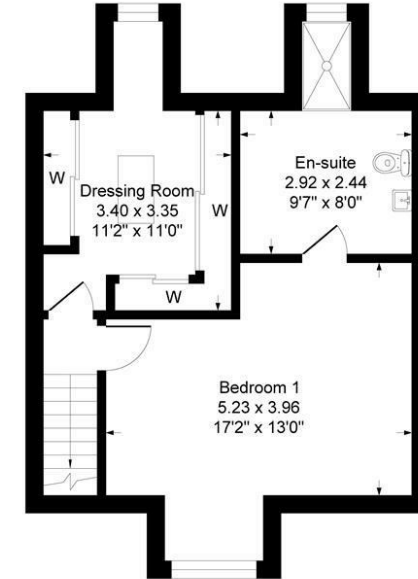
Ground Floor  
837 sq.ft. (77.7 sq.m.) approx



First Floor  
772 sq.ft. (71.6 sq.m.) approx



Second Floor  
493 sq.ft. (45.7 sq.m.) approx



Total Floor Area : 2101 sq.ft. (195.2 sq.m.) approx

Whilst every attempt has been made to ensure the accuracy of the floorplan contained here, measurement of doors, windows, rooms, and any other items are approximate and no responsibility is taken for any error, omission or mis-statement. This plan is for illustrative purposes only and should be used as such by any prospective purchaser. The services, system and appliances shown have not been tested and no guarantee as to their operability or efficiency can be given.



These particulars are believed to be accurate but they are not guaranteed and do not form a contract. Neither Jordan Fishwick nor the vendor or lessor accept any responsibility in respect of these particulars, which are not intended to be statements or representations of fact and any intending purchaser or lessee must satisfy himself by inspection or otherwise as to the correctness of each of the statements contained in these particulars. Any floorplans on this brochure are for illustrative purposes only and are not necessarily to scale.

Offices at: Chorlton, Didsbury, Disley, Hale, Glossop, Macclesfield, Manchester Deansgate, Manchester Whitworth Street, New Mills, Sale, Wilmslow and Withington

36-38 Alderley Road, Wilmslow, Cheshire, SK9 1JX

01625 532000

wilmslow@jordanfishwick.co.uk

www.jordanfishwick.co.uk