



jordan fishwick

3 Rydal Mews, Manchester Road, SK9 2JH
Guide Price £349,950



Rydal Mews WILMSLOW SK9 2JH

Guide Price £349,950



NO CHAIN. A three bedroom townhouse with garage located within walking distance of Wilmslow. The property is conveniently situated within easy reach of Wilmslow town centre with its excellent range of shops and general services, restaurants and wine bars. For the commuter Wilmslow railway station is on the main line to London Euston and also provides a regular commuter service to Manchester and surrounding districts. Upon entering, the ground floor comprises an entrance hallway and a utility room with access to the gardens. The first floor accommodation benefits from having a large living room and separate kitchen diner with modern fitted kitchen. There are three double bedrooms located on the second floor with a modern bathroom. The outside offers residents parking and a mature communal garden space to the rear and side. There is a garage for extra storage. Viewings essential to fully appreciate.



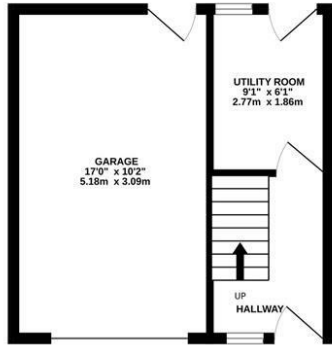
- Town House
- Small development
- Three bedrooms
- Convenient location
- Spacious Accommodation
- Walking distance of town centre
- Accommodation over three floors
- Garage



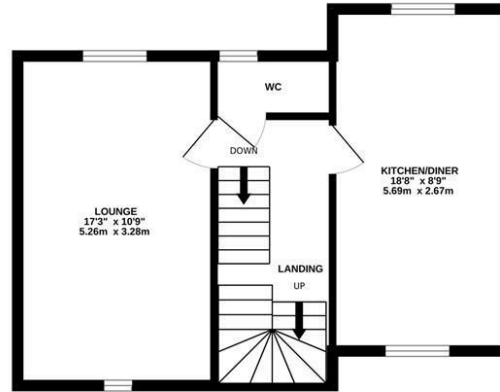
Energy Efficiency Rating		
	Current	Potential
Very energy efficient - lower running costs		
(92 plus) A		
(81-91) B		84
(69-80) C	73	
(55-68) D		
(39-54) E		
(21-38) F		
(1-20) G		
Not energy efficient - higher running costs		
England & Wales	EU Directive 2002/91/EC	



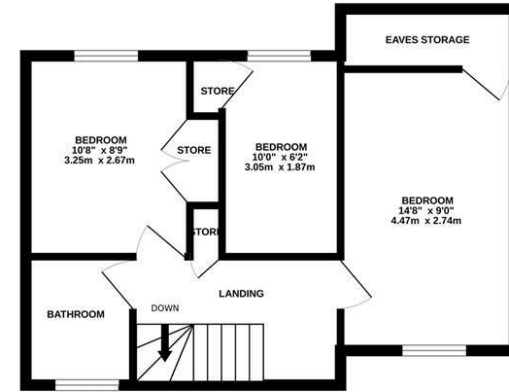
GROUND FLOOR
277 sq.ft. (25.7 sq.m.) approx.



1ST FLOOR
435 sq.ft. (40.4 sq.m.) approx.



2ND FLOOR
435 sq.ft. (40.4 sq.m.) approx.



TOTAL FLOOR AREA : 1147 sq.ft. (106.6 sq.m.) approx.
Measurements are approximate. Not to scale. Illustrative purposes only
Made with Metropix ©2024



These particulars are believed to be accurate but they are not guaranteed and do not form a contract. Neither Jordan Fishwick nor the vendor or lessor accept any responsibility in respect of these particulars, which are not intended to be statements or representations of fact and any intending purchaser or lessee must satisfy himself by inspection or otherwise as to the correctness of each of the statements contained in these particulars. Any floorplans on this brochure are for illustrative purposes only and are not necessarily to scale.

Offices at: Chorlton, Didsbury, Disley, Hale, Glossop, Macclesfield, Manchester Deansgate, Manchester Whitworth Street, New Mills, Sale, Wilmslow and Withington

36-38 Alderley Road, Wilmslow, Cheshire, SK9 1JX
01625 532000

wilmslow@jordanfishwick.co.uk
www.jordanfishwick.co.uk