



*jordan fishwick*

9 Lacey Court, SK9 4BH  
Price Guide £199,950



## Lacey Court Wilmslow SK9 4BH

Price Guide £199,950



A stunning two double bedroom second floor (top floor) apartment located within walking distance of Wilmslow town centre and the train station. Located on Lacey Green within the ever popular Lacey Court development this apartment also benefits from having a garage which provides additional storage. In brief this spacious apartment comprises of a large and welcoming entrance hallway with contemporary oak internal doors to all rooms. There is a large L shaped lounge diner with windows to two sides providing a large source of natural light. The kitchen is fitted with a stylish and matching range of wall and base units with white work surfaces. Additionally there are a number of integrated appliances within the kitchen which include a fridge, freezer, dishwasher, washing machine, oven and an induction hob. The two double bedrooms have been tastefully decorated throughout and are spacious. There is a modern and stylish refitted bathroom suite with large airing cupboard which houses the gas combination boiler. Externally the property benefits from having a garage (number six) and there are well tended and maintained communal gardens and a residents car park.

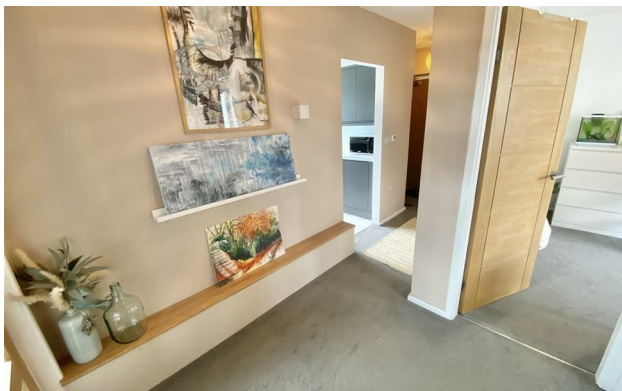




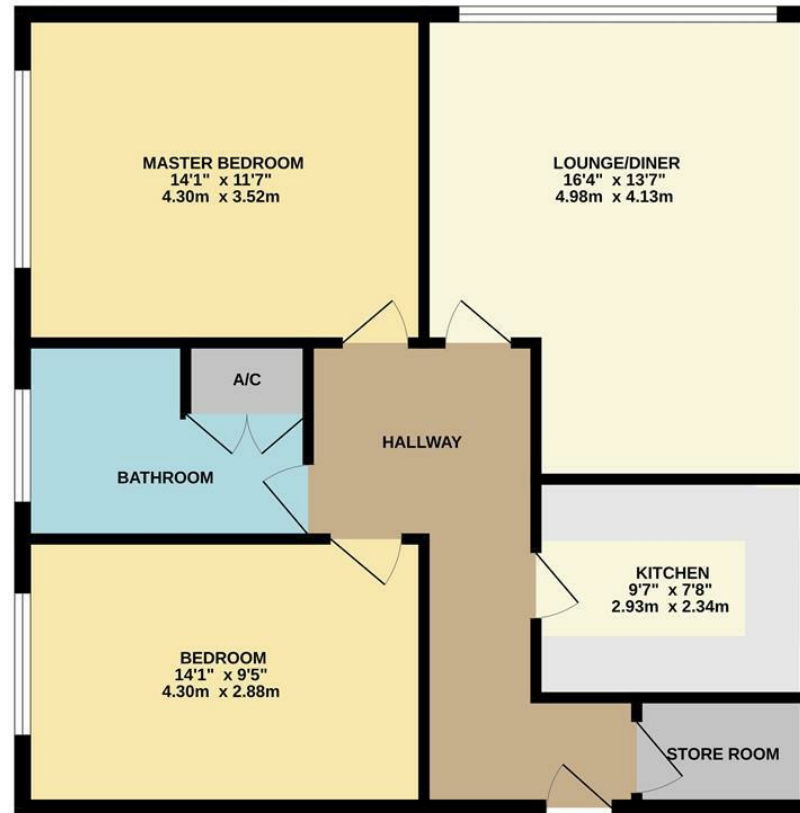
- Top floor Apartment
- Two Double Bedrooms
- Stunning Kitchen
- Stylish Bathroom
- Integrated Kitchen Appliances
- Residents car park
- Attractive communal areas
- Garage
- Gas central heated
- Double Glazed



| Energy Efficiency Rating                    |                            |           |
|---|----------------------------|-----------|
|   | Current                    | Potential |
| Very energy efficient - lower running costs |                            |           |
| (92 plus) <b>A</b>                          |                            |           |
| (81-91) <b>B</b>                            |                            |           |
| (69-80) <b>C</b>                            |                            |           |
| (55-68) <b>D</b>                            |                            | <b>61</b> |
| (39-54) <b>E</b>                            | <b>46</b>                  |           |
| (21-38) <b>F</b>                            |                            |           |
| (1-20) <b>G</b>                             |                            |           |
| Not energy efficient - higher running costs |                            |           |
| <b>England &amp; Wales</b>                  | EU Directive<br>2002/91/EC |           |



SECOND FLOOR APARTMENT  
771 sq.ft. (71.7 sq.m.) approx.



TOTAL FLOOR AREA: 771 sq.ft. (71.7 sq.m.) approx.  
Measurements are approximate. Not to scale. Illustrative purposes only.  
Made with Metropix ©2024



These particulars are believed to be accurate but they are not guaranteed and do not form a contract. Neither Jordan Fishwick nor the vendor or lessor accept any responsibility in respect of these particulars, which are not intended to be statements or representations of fact and any intending purchaser or lessee must satisfy himself by inspection or otherwise as to the correctness of each of the statements contained in these particulars. Any floorplans on this brochure are for illustrative purposes only and are not necessarily to scale.

Offices at: Chorlton, Didsbury, Disley, Hale, Glossop, Macclesfield, Manchester Deansgate, Manchester Whitworth Street, New Mills, Sale, Wilmslow and Withington

36-38 Alderley Road, Wilmslow, Cheshire, SK9 1JX

01625 532000

wilmslow@jordanfishwick.co.uk

www.jordanfishwick.co.uk