



Jordan fishwick

Springbank Lane, Springbank Farm, SK10
PCM £1,995 PCM

Springbank Lane Adlington SK10 4LD

£1,995 PCM



ADLINGTON FURNISHED - VIEWING ESSENTIAL TO APPRECIATE !

This HIDDEN GEM is set back from the road in a peaceful location with views over The Middlewood Way. Being only a short drive to Wilmslow, Macclesfield and Alderley Edge and within walking distance of Adlington train station. Having been refurbished this extremely spacious gated private barn conversion is presented in immaculate order.

The high standard of accommodation includes a dining hallway alongside a spacious open plan lounge kitchen with wood floor and wood burning stove, A spiral staircase leads to a second lounge with balcony and large double bedroom with en suite shower room.

A further inner hallway off the kitchen gives access to an oak staircase leading to a further double bedroom with doors to balcony with fabulous far reaching views, en-suite bathroom with under floor heating

Private courtyard with decked area and outside storage along with secure off road parking for up to 4 vehicles. MUST BE VIEWED TO BE APPRECIATED! £1995 .00 pcm Contact Wilmslow 01625 536300


COUNCIL TAX E

EPC D



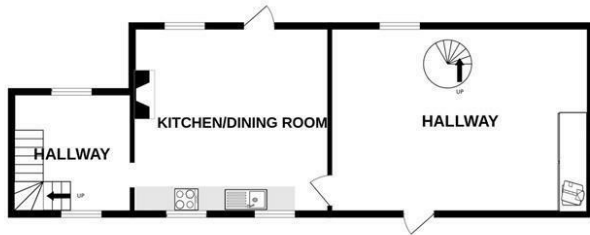
- GATED
- BARN CONVERSION
- IMMACULATE THROUGHOUT
- VIEWS OVER THE MIDDLEWOOD WAY
- AMPLE PARKING
- COUNCIL TAX C
- EPC E



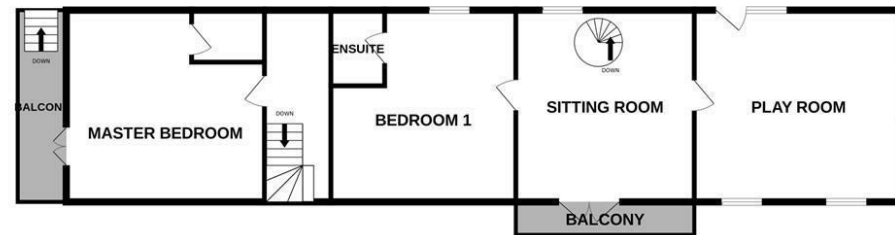
Energy Efficiency Rating		
	Current	Potential
Very energy efficient - lower running costs		
(92 plus) A		
(81-91) B		
(69-80) C		
(55-68) D		63
(39-54) E	43	
(21-38) F		
(1-20) G		
Not energy efficient - higher running costs		
England & Wales	EU Directive 2002/91/EC 	



GROUND FLOOR



1ST FLOOR



Measurements are approximate. Not to scale. Illustrative purposes only
Made with Metropix ©2024



These particulars are believed to be accurate but they are not guaranteed and do not form a contract. Neither Jordan Fishwick nor the vendor or lessor accept any responsibility in respect of these particulars, which are not intended to be statements or representations of fact and any intending purchaser or lessee must satisfy himself by inspection or otherwise as to the correctness of each of the statements contained in these particulars. Any floorplans on this brochure are for illustrative purposes only and are not necessarily to scale.

Offices at: Chorlton, Didsbury, Disley, Hale, Glossop, Macclesfield, Manchester Deansgate, Manchester Whitworth Street, New Mills, Sale, Wilmslow and Withington

01625 536300

wilmslow@jordanfishwick.co.uk
www.jordanfishwick.co.uk