



Jordan fishwick

ALDERLEY EDGE
Woodbrook Road



Woodbrook Road, ALDERLEY EDGE, SK9

£2,750 PCM



The Property

AVAILABLE EARLY SEPTEMBER FULLY FURNISHED
VIEWING ESSENTIAL

*****SHORT TERM LET AVAILABLE*****

Woodbrook Tower is one of Alderley's most unique properties enjoying fabulous extending views overlooking the Cheshire Plains. Set in approximately two acres of mature communal gardens on one of the most exclusive roads in Alderley Edge. Guarded by electric gates, the Tower is part of an exclusive development merging beautiful period features with modern technology. The opulent accommodation over 5 floors includes polished marble walls and ceilings which create a unique and stylish finish to this stunning apartment.

Ground floor entrance with modern fitted kitchen diner with integrated appliances, storage and utility. The 2nd bedroom and bathroom are also on the ground floor along with a spiral cast iron staircase to the wine cellar to the lower ground floor.

To the 1st floor superbly presented lounge with cinema screen with study/office area.

On the second floor master bedroom with dressing area and en suite shower room, all finished to the highest specification.

To the second landing reading area along with stairs to the top floor which has been purposely designed to optimise the stunning views with large windows to all aspects and fitted seating which creates possibly the finest views in Alderley Edge making for an ideal entertaining space.

Sonos sound system integrated through the apartment. Garage included and dedicated secure parking.

SERVICED LET AVAILABLE IF REQUIRED

Directions

SK9 7DB



- GATED DEVELOPMENT
- TWO DOUBLE BEDROOMS
- TWO BATHROOMS
- VIEWING RECOMMENDED
- WALKING DISTANCE OF VILLAGE
- COUNCIL TAX G
- EPC G

Postcode - SK9 7DB

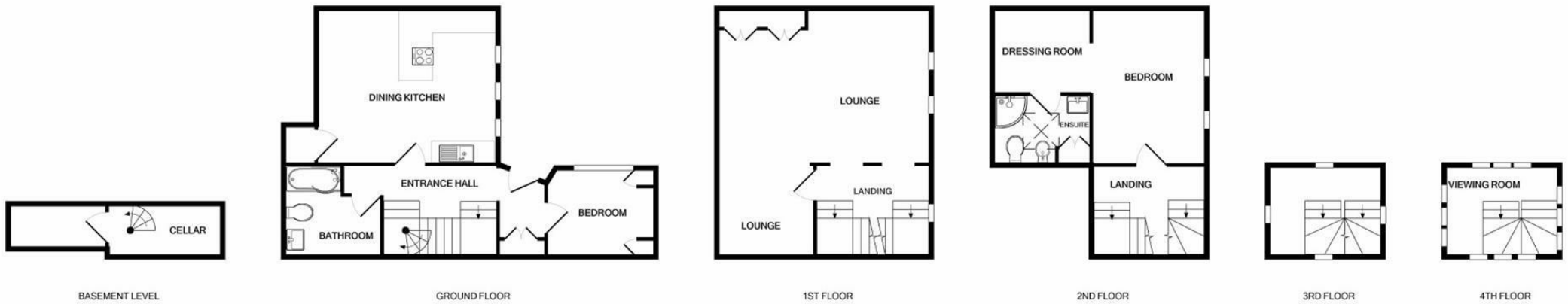
EPC Rating - E

Floor Area - sq ft

Local Authority - Cheshire east

Council Tax - G





Measurements are approximate. Not to scale. Illustrative purposes only
Made with Metropix ©2021



These particulars are believed to be accurate but they are not guaranteed and do not form a contract. Neither Jordan Fishwick nor the vendor or lessor accept any responsibility in respect of these particulars, which are not intended to be statements or representations of fact and any intending purchaser or lessee must satisfy himself by inspection or otherwise as to the correctness of each of the statements contained in these particulars. Any floorplans on this brochure are for illustrative purposes only and are not necessarily to scale.

Offices at: Chorlton, Didsbury, Disley, Hale, Glossop, Macclesfield, Manchester Deansgate, Manchester Whitworth Street, New Mills, Sale, Wilmslow and Withington

01625 536300

wilmslow@jordanfishwick.co.uk
www.jordanfishwick.co.uk