



jordan fishwick

4 Rydal Mews, Manchester Road, SK9 2JH
Guide Price £350,000

Rydal Mews WILMSLOW SK9 2JH

Guide Price £350,000




Take a step into this spacious mews property located on this quiet development within walking distance of Wilmslow town centre and only a short drive to Manchester International Airport and all the major motorway networks. Also, within close proximity to Wilmslow train station with direct lines to London Euston and Manchester Piccadilly. Offering spacious accommodation over three floors and benefiting from off road parking and communal gardens. Lounge, dining kitchen with gas hob, electric oven and access to the garden. To the first floor there two double bedrooms, a third bedroom/boxroom/study, as well as a shower room. To the second floor a further two double bedrooms and shower room.



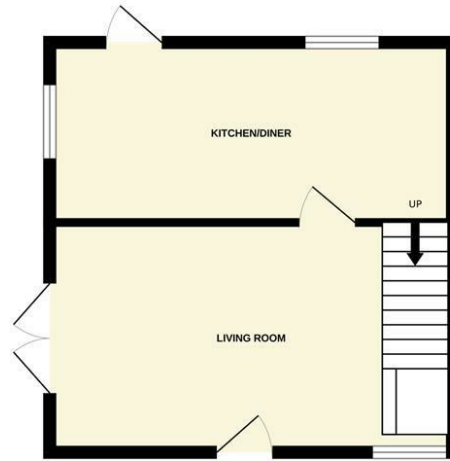
- Mews Property
- Small development
- Four double bedrooms & Single Bedroom
- Convenient location
- Spacious Accommodation
- Walking distance of town centre
- Accommodation over three floors
- Garage



Energy Efficiency Rating		
	Current	Potential
Very energy efficient - lower running costs		
(92 plus) A		
(81-91) B		82
(69-80) C	69	
(55-68) D		
(39-54) E		
(21-38) F		
(1-20) G		
Not energy efficient - higher running costs		
England & Wales	EU Directive 2002/91/EC 	



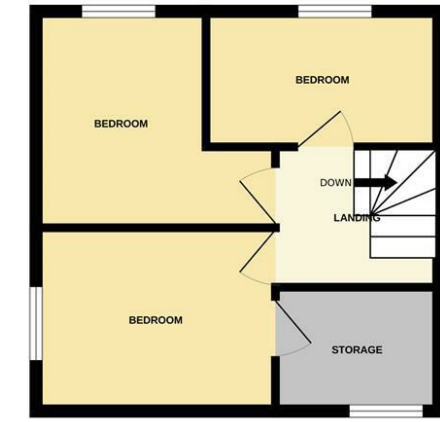
GROUND FLOOR



1ST FLOOR



2ND FLOOR



Measurements are approximate. Not to scale. Illustrative purposes only
Made with Metropix ©2024



These particulars are believed to be accurate but they are not guaranteed and do not form a contract. Neither Jordan Fishwick nor the vendor or lessor accept any responsibility in respect of these particulars, which are not intended to be statements or representations of fact and any intending purchaser or lessee must satisfy himself by inspection or otherwise as to the correctness of each of the statements contained in these particulars. Any floorplans on this brochure are for illustrative purposes only and are not necessarily to scale.

Offices at: Chorlton, Didsbury, Disley, Hale, Glossop, Macclesfield, Manchester Deansgate, Manchester Whitworth Street, New Mills, Sale, Wilmslow and Withington

36-38 Alderley Road, Wilmslow, Cheshire, SK9 1JX
01625 532000

wilmslow@jordanfishwick.co.uk
www.jordanfishwick.co.uk