



jordan fishwick

17 Moss Lane, SK9 7HP
PCM £1,950 PCM



Moss Lane Alderley Edge SK9 7HP

£1,950 PCM



AVAILABLE NOW PART FURNISHED - A MUST VIEW !

Located on this highly popular road and being only a stones throw from Alderley Edge Cricket Club and a short walk from the village centre is this extremely spacious mid terrace.

This attractive property is offered to the rental market in **IMMACULATE** condition after just having undergone a full refurbishment, where period features have been seamlessly blended with a modern and clean finish to create a fabulous home ideal for the professional single, couple, or small family.

Entrance hall with tiled floor, lounge through diner with wood floor and wood burning stove, newly fitted modern kitchen with quartz work surfaces and Neff 5 zone induction hob, Neff double oven, Bosch full height freezer & separate Bosch full height fridge, dishwasher, Bosch washing machine and access to cellar and door to enclosed rear courtyard.

To the first floor two extremely well proportioned double bedrooms both with extensive fitted wardrobes and bathroom with two basins and shower over bath.

Newly fitted, double glazed sash windows throughout

Front and rear courtyard gardens, off road parking for 3 cars, good sized shed for storage.

Contact Wilmslow 01625 536300 £1950.00pcm

COUNCIL TAX D

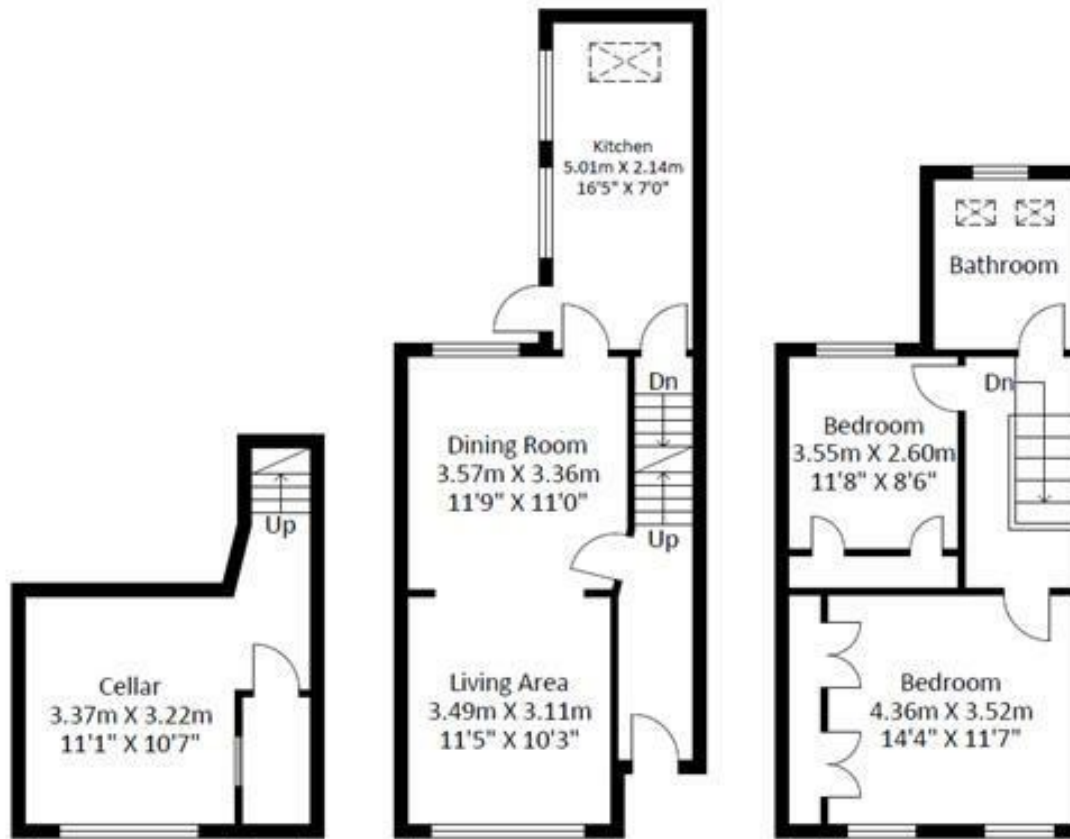
EPC C





Energy Efficiency Rating		
	Current	Potential
Very energy efficient - lower running costs		
(92 plus) A		
(81-91) B		88
(69-80) C	70	
(55-68) D		
(39-54) E		
(21-38) F		
(1-20) G		
Not energy efficient - higher running costs		
England & Wales	EU Directive 2002/91/EC	





Basement
 Approximate Floor Area
 181.91 sq. ft
 (16.9sq.m)

Ground Floor
 Approximate Floor Area
 440.24 sq. ft
 (40.9 sq.m)

First Floor
 Approximate Floor Area
 398.26 sq. ft
 (37.0 sq.m)

Approximate Gross Internal Area = 94.8 sq m / 1020.41 sq ft
 Illustration for identification purposes only, measurements are approximate, not to scale.



These particulars are believed to be accurate but they are not guaranteed and do not form a contract. Neither Jordan Fishwick nor the vendor or lessor accept any responsibility in respect of these particulars, which are not intended to be statements or representations of fact and any intending purchaser or lessee must satisfy himself by inspection or otherwise as to the correctness of each of the statements contained in these particulars. Any floorplans on this brochure are for illustrative purposes only and are not necessarily to scale.

Offices at: Chorlton, Didsbury, Disley, Hale, Glossop, Macclesfield, Manchester Deansgate, Manchester Whitworth Street, New Mills, Sale, Wilmslow and Withington

01625 536300

wilmslow@jordanfishwick.co.uk
 www.jordanfishwick.co.uk