



*jordan fishwick*

41 Sandhurst Drive, Wilmslow, SK9 2GP  
PCM £2,600 PCM





## Sandhurst Drive Cheshire SK9 2GP

£2,600 PCM



### AVAILABLE NOW PART FURNISHED - VIEWING ESSENTIAL TO APPRECIATE

This immaculate and spacious four bedroom detached is located on this extremely popular development within walking distance of the town centre and train station and within easy reach of the A34, motorway networks and Manchester International Airport.

With off road parking for two cars a good sized single garage, conservatory with access to fully enclosed sunny rear garden and four well proportioned bedrooms make this detached property a super family home.

Entrance hall, downstairs WC, lounge with feature gas fireplace and doors to, fully fitted dining kitchen with utility room with access to the rear garden, conservatory with doors to fully enclosed sunny rear garden with decked area.

To the first floor main bedroom with ensuite bathroom two further double bedrooms, third large single bedroom, family bathroom with shower over bath.

Garage Off road parking for 2 cars.

Contact Wilmslow 01625 536300 £2600.00pcm

EPC D

COUNCIL TAX F






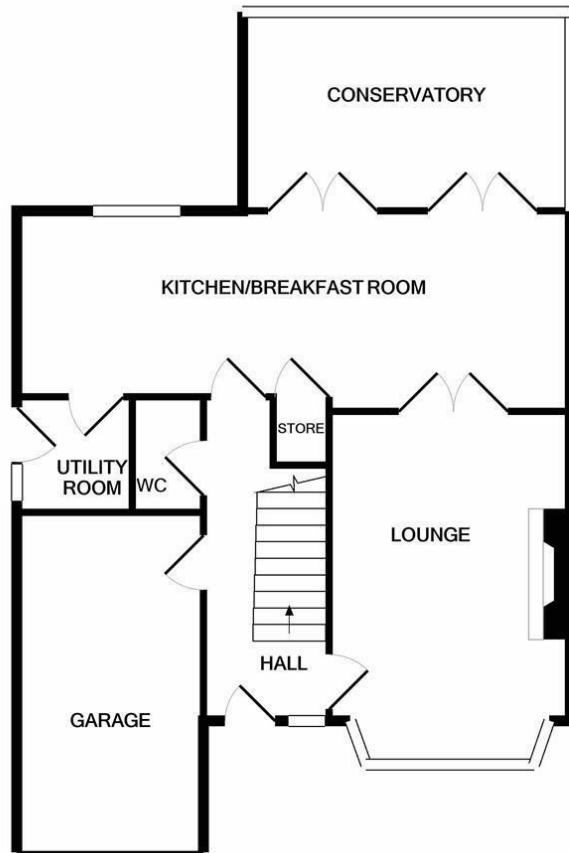
- SUPER FAMILY HOME
- DETACHED
- FOUR BEDROOMS
- THREE RECEPTION ROOMS
- SUNNY REAR GARDEN
- COUNCIL TAX F



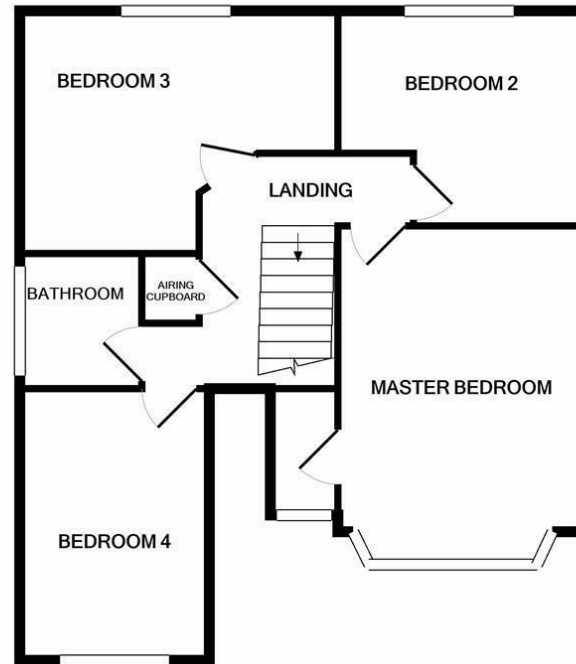
### Energy Efficiency Rating

|   | Current   | Potential |
|---|---|-----------|
| Very energy efficient - lower running costs |   |           |
| (92 plus) <b>A</b>                          |   |           |
| (81-91) <b>B</b>                            |   | <b>81</b> |
| (69-80) <b>C</b>                            |   |           |
| (55-68) <b>D</b>                            | <b>64</b>   |           |
| (39-54) <b>E</b>                            |   |           |
| (21-38) <b>F</b>                            |   |           |
| (1-20) <b>G</b>                             |   |           |
| Not energy efficient - higher running costs |   |           |
| <b>England &amp; Wales</b>                  | EU Directive 2002/91/EC  |           |





GROUND FLOOR



1ST FLOOR

Measurements are approximate. Not to scale. Illustrative purposes only  
Made with Metropix ©2022



These particulars are believed to be accurate but they are not guaranteed and do not form a contract. Neither Jordan Fishwick nor the vendor or lessor accept any responsibility in respect of these particulars, which are not intended to be statements or representations of fact and any intending purchaser or lessee must satisfy himself by inspection or otherwise as to the correctness of each of the statements contained in these particulars. Any floorplans on this brochure are for illustrative purposes only and are not necessarily to scale.

Offices at: Chorlton, Didsbury, Disley, Hale, Glossop, Macclesfield, Manchester Deansgate, Manchester Whitworth Street, New Mills, Sale, Wilmslow and Withington

01625 536300

wilmslow@jordanfishwick.co.uk  
www.jordanfishwick.co.uk