



**jordan fishwick**

APARTMENT 7 BOLLIN HEIGHTS WILMSLOW SK9 1BZ  
Guide Price £199,950

## APARTMENT 7 BOLLIN HEIGHTS WILMSLOW SK9 1BZ

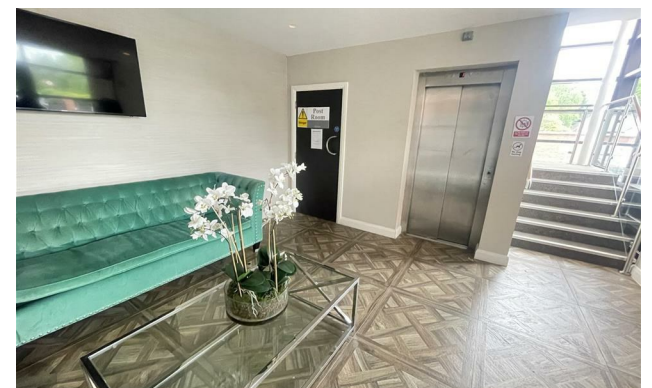
This stunning one bedroom ground floor apartment provides all the modern and stylish attributes you could want from a property and is within walking distance to the centre of Wilmslow which offers a variety of shops and restaurants. The property is also located close to Wilmslow station which provides direct access to both Manchester and London Euston, making the property ideal for the commuter. The apartments offers private communal areas, including a residents securely gated car park, BBQ space and garden area. Internally there are well maintained communal hallways and a lift to all floors. The apartment itself provides stylish and well appointed accommodation with a well proportioned open plan kitchen and living area, featuring a stylish kitchen with granite work surfaces, practical breakfast bar area and high gloss wall and base units. There is also a double bedroom complete with fitted wardrobes and stylish modern three piece bathroom suite with backlit LED mirror. A private balcony is also accessed to the rear through double glazed French doors, providing a further great sociable space and private outdoor area to enjoy. Viewings advised.



GROUND FLOOR



Measurements are approximate. Not a contract. Illustrative purposes only. Made on 16/06/2024



- Modern and Stylish Apartment
- Open plan kitchen and living area
- Double glazed
- Secure gated residents car park
- Private terrace / balcony space
- Communal Gardens
- Excellent Location
- Lift

Energy Efficiency Rating		Environmental Impact (CO <sub>2</sub> ) Rating			
Very energy efficient - lower running costs	Current	Potential	Very environmentally friendly - lower CO <sub>2</sub> emissions	Current	Potential
(92 plus) A			(92 plus) A		
(81-91) B			(81-91) B		
(69-80) C			(69-80) C		
(55-68) D		56	(55-68) D		
(39-54) E		56	(39-54) E		
(21-38) F			(21-38) F		
(1-20) G			(1-20) G		
Not energy efficient - higher running costs		Not environmentally friendly - higher CO <sub>2</sub> emissions			
England & Wales		England & Wales			
EU Directive 2002/91/EC		EU Directive 2002/91/EC			