



*jordan fishwick*

76 South Oak Lane, SK9 6AT  
Guide Price £525,000



## South Oak Lane Wilmslow SK9 6AT

Guide Price £525,000



NO CHAIN> Welcome to this charming Period semi detached house located on South Oak Lane in the desirable area of south Wilmslow. This property boasts two reception rooms, perfect for entertaining guests or simply relaxing with your family. With three cosy bedrooms, there is ample space for everyone to enjoy.

The house features a well maintained bathroom and a lovely large garden to the rear, ideal for those who have a green thumb or enjoy spending time outdoors. Additionally, the parking space for vehicles ensures convenience for you and your guests.

Situated in a sought after location, this property offers the perfect blend of traditional charm and modern comfort. Don't miss the opportunity to make this house your home and enjoy the peaceful surroundings of Wilmslow.



**Entrance Hallway**

**Downstairs WC**

2'9 x 6'0

**Living/Dining Room**

10'6 x 24'4

**Kitchen**

13'7 x 15'2

**Play Room**

7'5 x 15'2

**Shower Room**

6'0 x 6'0

**Bedroom One**

12'1 x 13'7

**Bedroom Two**

9'1 x 12'1

**Bedroom Three**

7'5 x 9'1



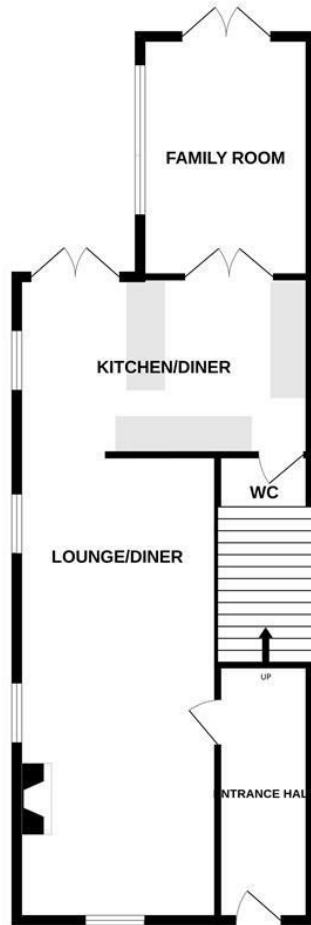
- THREE DOUBLE BEDROOMS
- SOUTH WILMSLOW LOCATION
- THREE RECEPTION ROOMS
- LARGE ENCLOSED REAR GARDEN
- OFF ROAD PARKING



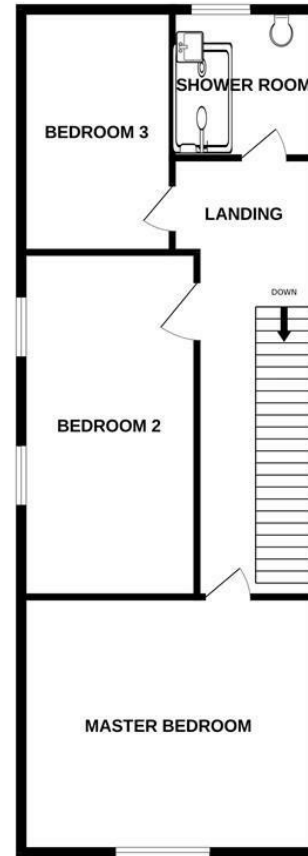
Energy Efficiency Rating		
	Current	Potential
Very energy efficient - lower running costs		
(92 plus) <b>A</b>		
(81-91) <b>B</b>		
(69-80) <b>C</b>		<b>78</b>
(55-68) <b>D</b>	<b>57</b>	
(39-54) <b>E</b>		
(21-38) <b>F</b>		
(1-20) <b>G</b>		
Not energy efficient - higher running costs		
<b>England &amp; Wales</b>	EU Directive 2002/91/EC	



GROUND FLOOR



1ST FLOOR



Measurements are approximate. Not to scale. Illustrative purposes only.  
Made with Metropix ©2023



These particulars are believed to be accurate but they are not guaranteed and do not form a contract. Neither Jordan Fishwick nor the vendor or lessor accept any responsibility in respect of these particulars, which are not intended to be statements or representations of fact and any intending purchaser or lessee must satisfy himself by inspection or otherwise as to the correctness of each of the statements contained in these particulars. Any floorplans on this brochure are for illustrative purposes only and are not necessarily to scale.

Offices at: Chorlton, Didsbury, Disley, Hale, Glossop, Macclesfield, Manchester Deansgate, Manchester Whitworth Street, New Mills, Sale, Wilmslow and Withington

36-38 Alderley Road, Wilmslow, Cheshire, SK9 1JX

01625 532000

wilmslow@jordanfishwick.co.uk

www.jordanfishwick.co.uk