



jordan fishwick

LOWER FERNHILL CHELFORD ROAD NETHER ALDERLEY

£1,400,000

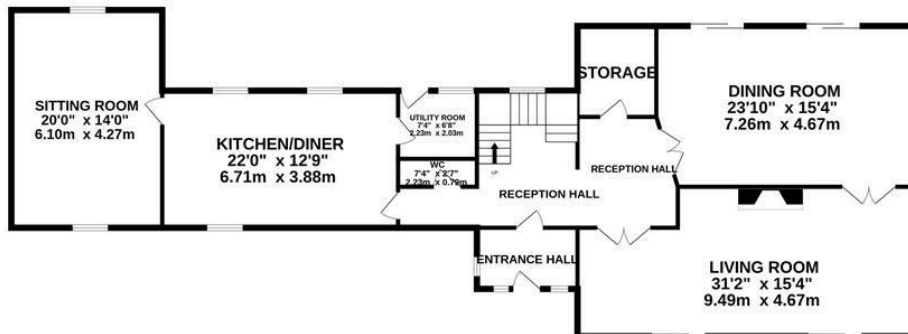
LOWER FERNHILL CHELFORD ROAD NETHER ALDERLEY SK10 4RT

Situated in spacious, private grounds overlooking open farmland to the rear this detached four bedroom house, with double garage and separate swimming pool building measuring 51' x 25' (1,275 sq ft) is sure to appeal to a wide variety of buyers. Offering a generous Lounge with gas fire, superb formal Dining Room, ground floor Cloakroom, spacious Kitchen / Breakfast Room with Aga, Utility Room, and a lovely TV / Lounge this delightful house will meet the needs of the modern family. To the first floor are four en-suite Bedrooms, all having extensive ranges of fitted furniture.

Being located in Nether Alderley, the property offers easy access to Alderley Edge, Wilmslow, Knutsford and Macclesfield. The Gated grounds offer a particularly large parking area, with access to the house, a generous double garage with up and over doors, and a very large building of approximately 1,275 sq ft currently housing a de-commissioned pool, with Sauna and Changing Rooms to the rear. This building could, subject to the necessary consents being obtained, be converted into a separate annexe for dependent relatives, a Gym / Leisure building, or for luxury car storage. Viewing is highly recommended to appreciate the variety of opportunities this property offers.



GROUND FLOOR



1ST FLOOR



Measurements are approximate. Not to scale. Illustrative purposes only. Made with Metropix ©2024

| Energy Efficiency Rating | | Current | Potential |
|---|---|-------------------------|-----------|
| Very energy efficient - lower running costs | | | |
| (92 plus) | A | | |
| (81-91) | B | | |
| (69-80) | C | | |
| (55-68) | D | | |
| (39-54) | E | | |
| (21-38) | F | | |
| (1-20) | G | | |
| Not energy efficient - higher running costs | | | |
| England & Wales | | EU Directive 2002/91/EC | |