



jordan fishwick

1 Carlton Avenue, SK9 4EP
Guide Price £635,000



Carlton Avenue Wilmslow SK9 4EP

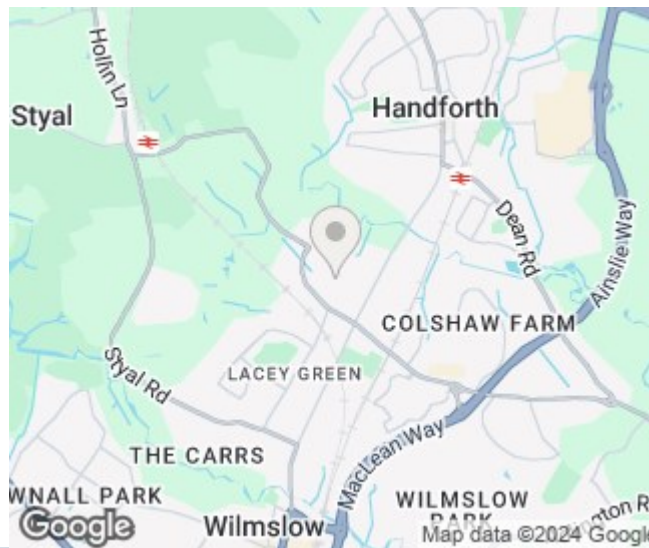
Guide Price £635,000



This four bedroom detached property on Carlton Avenue in the highly popular area of Wilmslow is a stunning home offering a comfortable and stylish living experience. As you enter the property, you are greeted by a spacious hallway leading to a large reception room and the kitchen diner. There is an additional family living space with a conservatory overlooking the beautiful rear garden, a perfect place to relax and unwind, with stunning views of the garden. There is also a separate cosy living room which has been created by converting the garage. This room provides additional space for entertaining guests or as a second living area. The kitchen diner is a well-designed space which is perfect for cooking and entertaining with patio doors to the garden. It is fitted with modern integrated appliances and features a dining area which can comfortably fit a kitchen table and chair set. The principle bedroom of the property has a stunning ensuite which has been tastefully designed with modern fittings and features. The three other bedrooms are also well-proportioned and offer ample space for comfortable living. The refitted and stylish family bathroom is a great feature of this property, which adds to the luxurious feel of the home. To the rear of the property, there is a beautiful lawned garden with a southerly aspect, which provides a perfect space for outdoor activities or relaxation. The garden is well maintained and offers a peaceful retreat from the hustle and bustle of daily life. The property benefits from off-road parking, which adds convenience and security for homeowners. Additionally, there is a downstairs wc. for added convenience for families. The property is gas central heated and double glazed. Overall, this property is a perfect home for anyone looking for a comfortable and stylish living experience in the highly sought-after area of Wilmslow.



- Extended detached home
- Four bedrooms
- Two Bathrooms
- Southerly aspect rear garden
- Popular location
- Convenient access to local schools
- Off road parking
- Quiet location



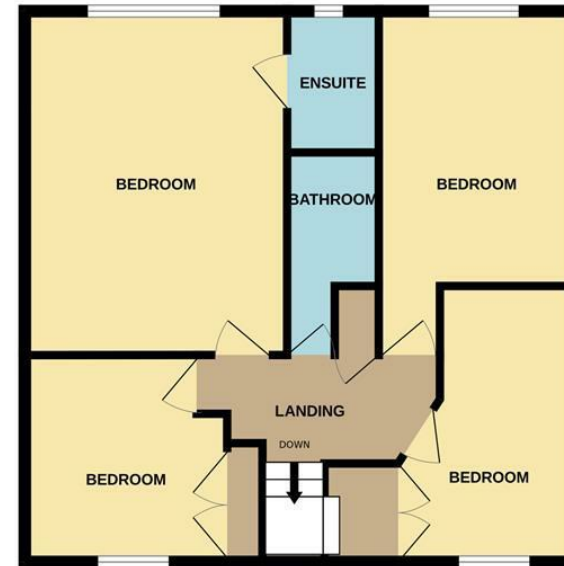
Energy Efficiency Rating		
	Current	Potential
Very energy efficient - lower running costs		
(92 plus) A		
(81-91) B		77
(69-80) C		
(55-68) D	61	
(39-54) E		
(21-38) F		
(1-20) G		
Not energy efficient - higher running costs		
England & Wales	EU Directive 2002/91/EC	



GROUND FLOOR



1ST FLOOR



Measurements are approximate. Not to scale. Illustrative purposes only
Made with Metropix ©2023



These particulars are believed to be accurate but they are not guaranteed and do not form a contract. Neither Jordan Fishwick nor the vendor or lessor accept any responsibility in respect of these particulars, which are not intended to be statements or representations of fact and any intending purchaser or lessee must satisfy himself by inspection or otherwise as to the correctness of each of the statements contained in these particulars. Any floorplans on this brochure are for illustrative purposes only and are not necessarily to scale.

Offices at: Chorlton, Didsbury, Disley, Hale, Glossop, Macclesfield, Manchester Deansgate, Manchester Whitworth Street, New Mills, Sale, Wilmslow and Withington

36-38 Alderley Road, Wilmslow, Cheshire, SK9 1JX
01625 532000

wilmslow@jordanfishwick.co.uk
www.jordanfishwick.co.uk