



jordan fishwick

11 Kingswood Court, Grove Avenue, SK9
PCM £950 PCM

Kingswood Court Wilmslow SK9 5EE

£950 PCM



FURNISHED AVAILABLE MID MAY - VIEWING HIGHLY RECOMMENDED

This immaculate one bedroom apartment is located in central Wilmslow with off road parking and being only a short walk to the train station.

Presented in excellent condition the property in brief comprises communal entrance hall, entrance hall with storage, lounge diner with french windows and Juliette balcony, modern fitted kitchen with appliances, bathroom with shower over bath. REPOSIT SCHEME AVAILABLE ON THIS PROPERTY

Contact Wilmslow 01625 536300 £950.00pcm

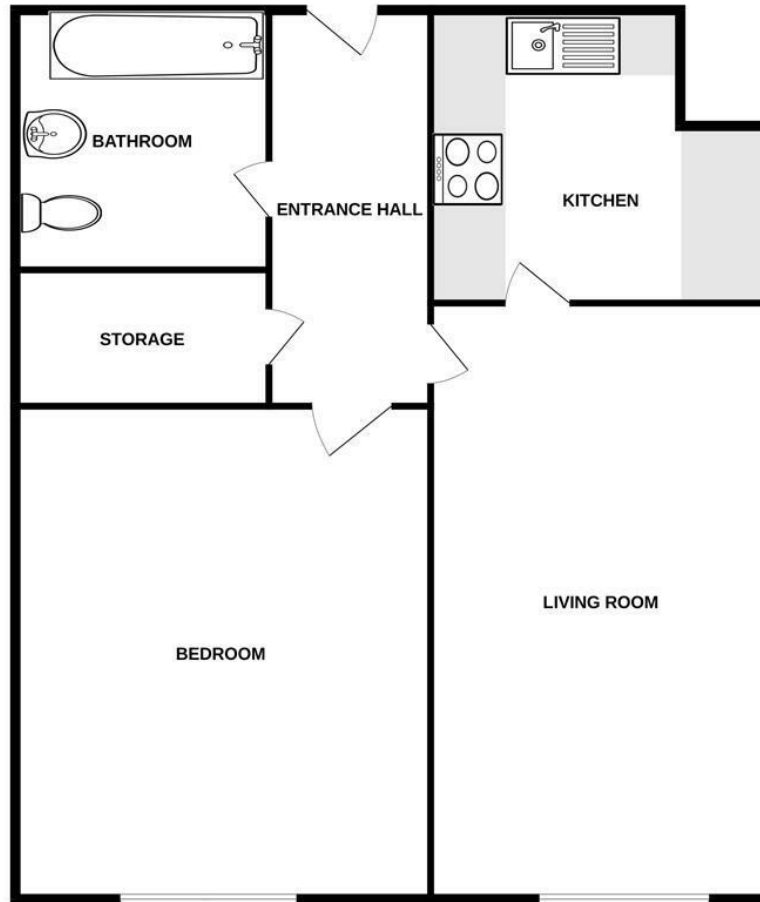


- CENTRAL LOCATION
- ONE DOUBLE BEDROOM
- EXCELLENT CONDITION
- WALKING DISTANCE OF TRAIN STATION
- COUNCIL TAX C



Energy Efficiency Rating		
	Current	Potential
Very energy efficient - lower running costs		
(92 plus) A		
(81-91) B	85	87
(69-80) C		
(55-68) D		
(39-54) E		
(21-38) F		
(1-20) G		
Not energy efficient - higher running costs		
England & Wales	EU Directive 2002/91/EC	

1ST FLOOR



Measurements are approximate. Not to scale. Illustrative purposes only.
Made with Metropix ©2024



These particulars are believed to be accurate but they are not guaranteed and do not form a contract. Neither Jordan Fishwick nor the vendor or lessor accept any responsibility in respect of these particulars, which are not intended to be statements or representations of fact and any intending purchaser or lessee must satisfy himself by inspection or otherwise as to the correctness of each of the statements contained in these particulars. Any floorplans on this brochure are for illustrative purposes only and are not necessarily to scale.

Offices at: Chorlton, Didsbury, Disley, Hale, Glossop, Macclesfield, Manchester Deansgate, Manchester Whitworth Street, New Mills, Sale, Wilmslow and Withington

01625 536300

wilmslow@jordanfishwick.co.uk
www.jordanfishwick.co.uk