



*jordan fishwick*

1 Brockley Square, SK9 5BF  
Guide Price £999,995





## Brockley Square Wilmslow SK9 5BF

Guide Price £999,995



A rare opportunity to acquire a detached four bedroom family home within private a gated development constructed by renowned PH Properties on Grove Avenue, a stone's throw from Wilmslow town centre, with its superb variety of restaurants and cafes and high street and independent stores, as well as Wilmslow train station providing easy access to Manchester and London This immaculately presented property built in a ' Georgian ' style offers parking for four cars, and a delightful, easy to manage partially walled, private garden. The current owner has added to the already superb specification of this house with tiled floors, fitted wardrobes, and a bespoke contemporary gas fire in the living room. Only through viewing can the quality of this property be appreciated.

Entered via Georgian style door to a bright and spacious reception hall the ground floor accommodation comprises: Office / Snug / Guest Bedroom, Shower Room and spacious Kitchen / Dining Room. To the first floor are the Living Room with dual aspect, and luxurious master bedroom with en-suite bathroom and comprehensive fitted wardrobes. To the first floor are three generous bedrooms, shower room and store. This light and airy family home offers flexible accommodation over three floors.








- Detached Family Home
- Within a stone's throw of Wilmslow Town Centre
- Four Bedrooms
- Master En Suite
- Private Gated Development
- Parking for Four Cars
- Superb Specification Throughout
- Private, enclosed gardens

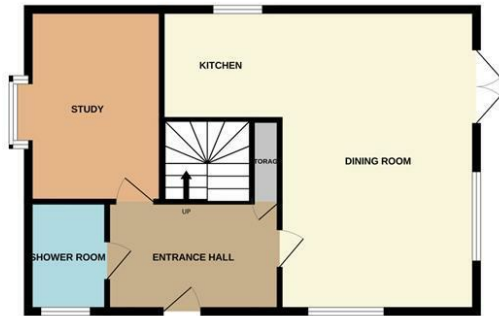


Energy Efficiency Rating		
	Current	Potential
Very energy efficient - lower running costs		
(92 plus) <b>A</b>		<b>91</b>
(81-91) <b>B</b>	<b>84</b>	
(69-80) <b>C</b>		
(55-68) <b>D</b>		
(39-54) <b>E</b>		
(21-38) <b>F</b>		
(1-20) <b>G</b>		
Not energy efficient - higher running costs		
<b>England &amp; Wales</b>	EU Directive 2002/91/EC 	

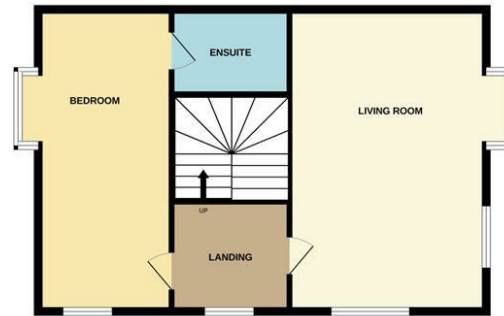




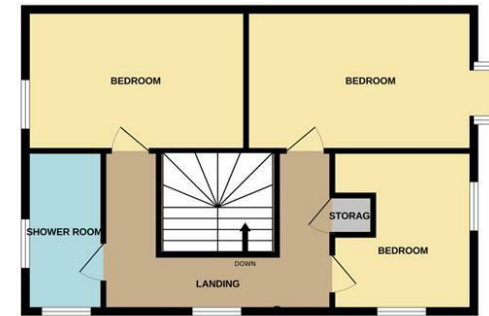
GROUND FLOOR



1ST FLOOR



2ND FLOOR



Measurements are approximate. Not to scale. Illustrative purposes only  
Made with Metropix ©2024



These particulars are believed to be accurate but they are not guaranteed and do not form a contract. Neither Jordan Fishwick nor the vendor or lessor accept any responsibility in respect of these particulars, which are not intended to be statements or representations of fact and any intending purchaser or lessee must satisfy himself by inspection or otherwise as to the correctness of each of the statements contained in these particulars. Any floorplans on this brochure are for illustrative purposes only and are not necessarily to scale.

Offices at: Chorlton, Didsbury, Disley, Hale, Glossop, Macclesfield, Manchester Deansgate, Manchester Whitworth Street, New Mills, Sale, Wilmslow and Withington

36-38 Alderley Road, Wilmslow, Cheshire, SK9 1JX

01625 532000

wilmslow@jordanfishwick.co.uk

www.jordanfishwick.co.uk