



*jordan fishwick*

3 The Ridings, SK9 6ES  
Guide Price £515,000





## The Ridings Wilmslow SK9 6ES

Guide Price £515,000



Offered for sale with NO ONWARD CHAIN, and situated in a highly sought after SOUTH WILMSLOW location, this semi detached townhouse property offers versatile accommodation across three floors, with four bedrooms, two bathrooms and off-road parking. Internally, the accommodation is modern and comprises: an entrance hall, downstairs WC and staircase to the first floor, generously proportioned KITCHEN DINER which opens through into the large living room with French doors out onto the rear garden. To the first floor, there are three double bedrooms and a Jack and Jill modern bathroom. To the second floor, there is the master bedroom and modern en-suite. The property enjoys uninterrupted views over open countryside to the rear. Externally to the front the property benefits from off road parking whilst to the rear, there is a well defined garden, mainly laid to lawn with patio and fenced boundaries.







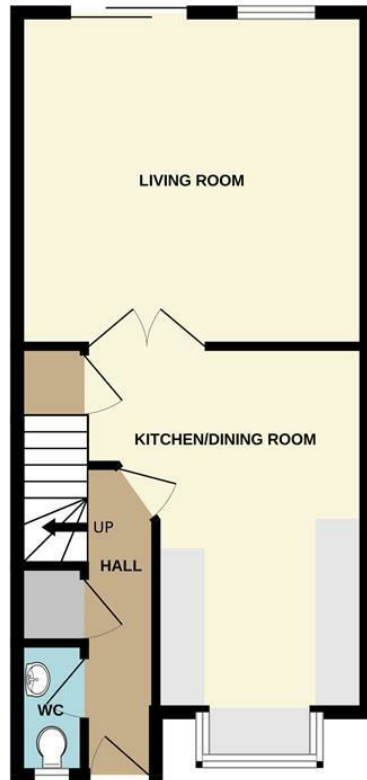
- Modern Townhouse
- Four Bedrooms
- Modern Bathroom
- Modern Ensuite
- Kitchen Diner
- Off Road Parking
- Open aspect to the rear
- No Chain



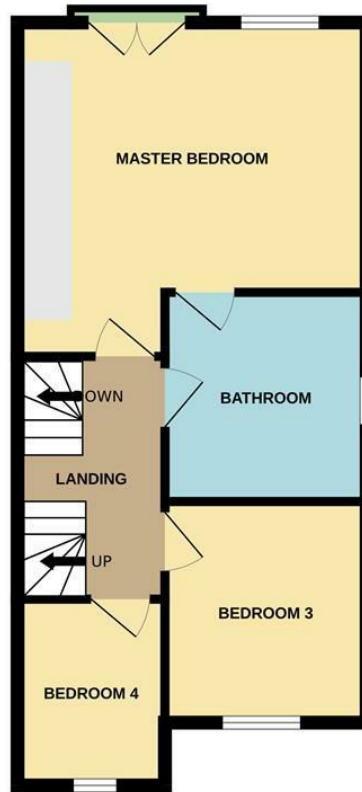
Energy Efficiency Rating		
	Current	Potential
Very energy efficient - lower running costs		
(92 plus) <b>A</b>		
(81-91) <b>B</b>		<b>82</b>
(69-80) <b>C</b>	<b>73</b>	
(55-68) <b>D</b>		
(39-54) <b>E</b>		
(21-38) <b>F</b>		
(1-20) <b>G</b>		
Not energy efficient - higher running costs		
<b>England &amp; Wales</b>	EU Directive 2002/91/EC	



GROUND FLOOR



1ST FLOOR



2ND FLOOR



Measurements are approximate. Not to scale. Illustrative purposes only  
Made with Metropix ©2024



These particulars are believed to be accurate but they are not guaranteed and do not form a contract. Neither Jordan Fishwick nor the vendor or lessor accept any responsibility in respect of these particulars, which are not intended to be statements or representations of fact and any intending purchaser or lessee must satisfy himself by inspection or otherwise as to the correctness of each of the statements contained in these particulars. Any floorplans on this brochure are for illustrative purposes only and are not necessarily to scale.

Offices at: Chorlton, Didsbury, Disley, Hale, Glossop, Macclesfield, Manchester Deansgate, Manchester Whitworth Street, New Mills, Sale, Wilmslow and Withington

36-38 Alderley Road, Wilmslow, Cheshire, SK9 1JX

01625 532000

wilmslow@jordanfishwick.co.uk

www.jordanfishwick.co.uk