



*jordan fishwick*

105 Ack Lane West, SK8 7EU  
PCM £2,600 PCM

# Ack Lane West CHEADLE HULME

£2,600 PCM



**PART FURNISHED AVAILABLE NOW - VIEWING RECOMMENDED**

Spacious detached family home located in an excellent position for both Cheadle Hulme and Bramhall village.

Being within easy reach of excellent local schools and with Bramhall village, Cheadle Hulme and the A34 bypass only a short drive away this well maintained detached is sure to appeal !

Also benefitting from a good sized rear garden, separate garage and off road parking for up to 4 cars.

Covered entrance porch, entrance hall, lounge through diner, study/ playroom/ dining room, modern breakfast kitchen with gas hob and electric double oven, dishwasher and washing machine, breakfast bar, understairs storage and doors to rear garden.

To the first floor four well proportioned bedrooms, good sized bathroom with shower over bath.

Gardens to front and rear, detached garage, off road parking on thick gravel driveway.

Contact Wilmslow 01625 536300 £2600.00pcm

EPC D

COUNCIL TAX F



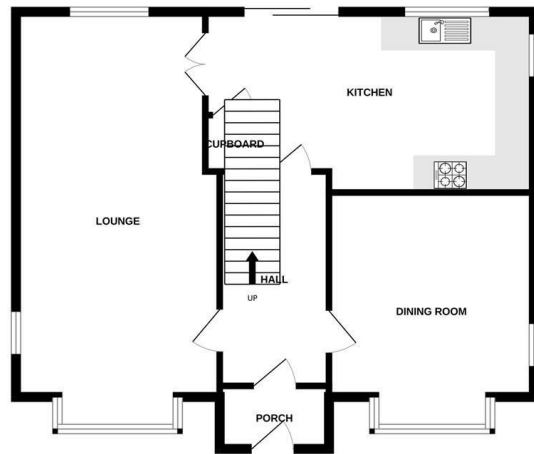
- DETACHED FAMILY HOME
- DETACHED GARAGE
- OFF ROAD PARKING
- EXCELLENT LOCATION FOR CHEADLE HULME AND BRAMHALL VILLAGE
- FOUR BEDROOMS
- LARGE REAR GARDEN
- COUNCIL TAX F



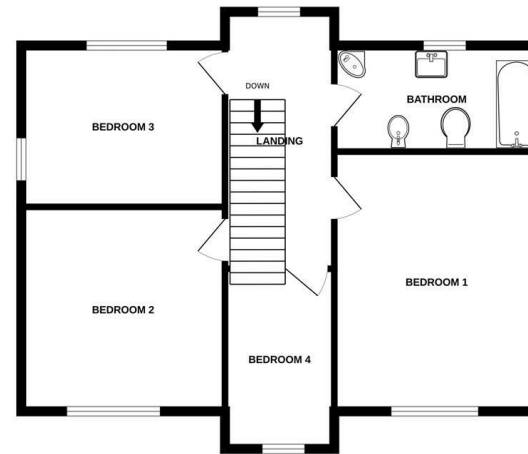
Energy Efficiency Rating		
	Current	Potential
Very energy efficient - lower running costs		
(92 plus) <b>A</b>		
(81-91) <b>B</b>		
(69-80) <b>C</b>		<b>74</b>
(55-68) <b>D</b>	<b>61</b>	
(39-54) <b>E</b>		
(21-38) <b>F</b>		
(1-20) <b>G</b>		
Not energy efficient - higher running costs		
<b>England &amp; Wales</b>	EU Directive 2002/91/EC	



GROUND FLOOR



1ST FLOOR



Measurements are approximate. Not to scale. Illustrative purposes only.  
Made with Metropix ©2024



These particulars are believed to be accurate but they are not guaranteed and do not form a contract. Neither Jordan Fishwick nor the vendor or lessor accept any responsibility in respect of these particulars, which are not intended to be statements or representations of fact and any intending purchaser or lessee must satisfy himself by inspection or otherwise as to the correctness of each of the statements contained in these particulars. Any floorplans on this brochure are for illustrative purposes only and are not necessarily to scale.

Offices at: Chorlton, Didsbury, Disley, Hale, Glossop, Macclesfield, Manchester Deansgate, Manchester Whitworth Street, New Mills, Sale, Wilmslow and Withington

01625 536300

wilmslow@jordanfishwick.co.uk  
www.jordanfishwick.co.uk