



Jordan fishwick

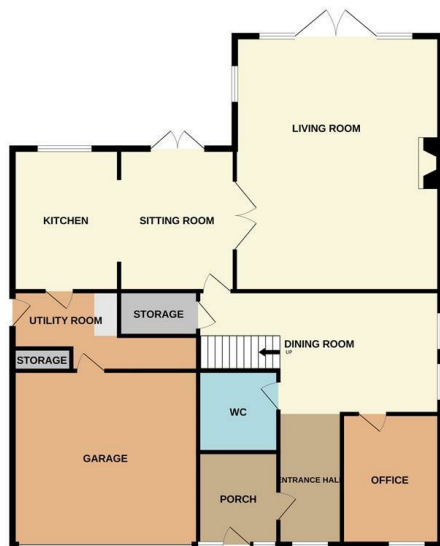
23 ASHFORD ROAD WILMSLOW SK9 1QD
Guide Price £769,950

23 ASHFORD ROAD WILMSLOW SK9 1QD

A wonderful opportunity to acquire this three bedroom detached home which is situated within an extremely desirable location on the ever popular Fulshaw Park. The property is within convenient reach of popular local schools, central Wilmslow and Alderley Edge village alike. The ground floor accommodation comprises in brief: Entrance porch, entrance hallway, downstairs W.C., dining area, home office, spacious living with open aspect views, living kitchen and utility room. The first floor accommodation comprises: Stairs/landing, double bedroom with en-suite, two further double bedrooms and a family bathroom. The property is set well back from the road and there is a block paved driveway providing off road parking for several vehicles. There are beautifully tended gardens mainly laid to lawn to both the front and rear with stunning open aspect views to the rear. Viewings essential to fully appreciate.



GROUND FLOOR



1ST FLOOR



Measurements are approximate. Not to scale. Illustrative purposes only. Made with Metropix ©2024



- Fulshaw Park location
- Detached
- Three bedroom
- Open aspect views to rear
- Garage
- Quiet cul-de-sac location
- Close proximity to Wilmslow and Alderley Edge village
- Versatile accommodation

Energy Efficiency Rating		Current	Potential
Very energy efficient - lower running costs			
(92 plus) A			
(81-91) B			
(69-80) C			
(55-68) D			
(39-54) E			
(21-38) F			
(1-20) G			
Not energy efficient - higher running costs			
England & Wales	EU Directive 2002/91/EC	73	79

Environmental Impact (CO ₂) Rating		Current	Potential
Very environmentally friendly - lower CO ₂ emissions			
(92 plus) A			
(81-91) B			
(69-80) C			
(55-68) D			
(39-54) E			
(21-38) F			
(1-20) G			
Not environmentally friendly - higher CO ₂ emissions			
England & Wales	EU Directive 2002/91/EC		