



*jordan fishwick*

Blencathra Moor Lane, SK9 6DN  
Guide Price £599,950

# Moor Lane Wilmslow SK9 6DN

Guide Price £599,950



This beautifully presented and EXTENDED FIVE BEDROOM semi detached home is situated in the extremely popular South Wilmslow area, close to open countryside, walks and trails, desirable schools, local shops and amenities. Having been extended to both the side and the rear, the property also benefits from a large front garden, spacious driveway and garage, we expect this will appeal to a number of buyers. In brief, this fabulous home comprises:- Entrance Hallway, spacious living room with log burner, stunning kitchen with opening to dining, utility room and downstairs wc. The first floor comprises; Three double bedrooms, two further good sized bedrooms, stylish bathroom and shower room. There are also stairs leading to the loft room which also has a shower room. Externally the property has low maintenance rear garden with paved patio area. To the front is a large garden which is mainly laid to lawn with driveway providing off road parking for multiple vehicles. Viewings essential to fully appreciate.

**Entrance Hallway**

Stairs to first floor, radiator, tiled flooring.

**Living Room**

17'1 into bay x 10'8

Spacious living room with log burner, uPVC double glazed window to front, radiator.

**Kitchen**

16'8 x 10'3

Stunning kitchen with sleek and stylish fitted base and wall mounted units with a range of integrated appliances including 'AEG' microwave and oven, dishwasher, induction hob with extractor over, fridge, stainless steel bowl sink and drainer. The kitchen area also benefits from double glazed sliding doors leading to rear garden, recessed ceiling spotlights, radiator and attractive tiled flooring with opening to dining room.

**Dining Room**

9'8 x 7'1

Ample space for dining table and chairs, recessed ceiling spotlights, double glazed window to side, attractive tiled flooring.

**Utility Room**

7'8 x 5'6

With fitted units, space for washer or dryer, fitted freezer, stainless steel sink.

**Downstairs WC**

Low level wc, wall mounted wash hand basin.

**Landing****Bedroom One**

14'1 x 9'0

Double bedroom with fitted wardrobes, radiator, uPVC double glazed window to front.

**Bedroom Two**

11'3 x 7'9

Double bedroom with uPVC double glazed window to rear, radiator, storage cupboard.

**Bedroom Three**

10'8 x 8'2

Further good sized bedroom with uPVC double glazed window to front, radiator.

**Bedroom Four**

8'3 x 7'9

Good sized bedroom with uPVC double glazed window to rear, radiator, wood effect flooring.

**Bedroom Five**

8'8 x 7'5

With uPVC double glazed window to front, radiator.

**Bathroom**

10'3 max x 7'5

Stylish bathroom with panelled bath, walk-in shower cubicle, low level wc, wall mounted wash hand basin with vanity unit under, uPVC double glazed frosted window to rear, chrome heated towel rail, recessed ceiling spotlights.

**Shower Room**

Walk-in shower cubicle, low level wc, wall mounted wash hand basin with vanity unit under, recessed ceiling spotlight, uPVC double glazed frosted window to side, chrome heated towel rail.

**Loft Room**

16'6 x 13'2 into eaves

Spacious room with eaves storage, Velux window.

**Loft Room Shower Room**

Shower cubicle, Velux window.


**Outside**

To rear of the property is a paved patio area with access to the front of the property which has a substantial garden which is mainly laid to lawn with driveway providing off road parking for multiple vehicles.



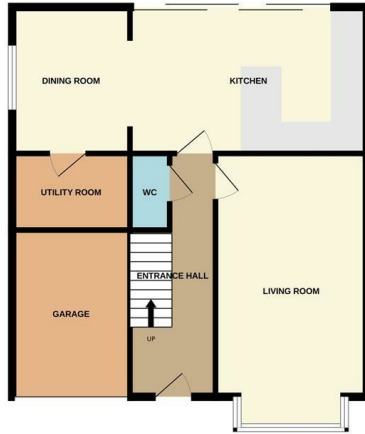
- South Wilmslow Location
- Five bedrooms
- Stunning Kitchen
- Off road parking
- Short stroll to countryside walks
- Garage
- Close proximity to good local schools
- Corner plot



Energy Efficiency Rating		
	Current	Potential
Very energy efficient - lower running costs		
(92 plus) <b>A</b>		
(81-91) <b>B</b>		
(69-80) <b>C</b>		<b>77</b>
(55-68) <b>D</b>	<b>62</b>	
(39-54) <b>E</b>		
(21-38) <b>F</b>		
(1-20) <b>G</b>		
Not energy efficient - higher running costs		
<b>England &amp; Wales</b>	EU Directive 2002/91/EC 	



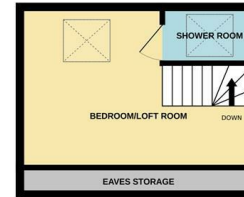
GROUND FLOOR



1ST FLOOR



2ND FLOOR



Measurements are approximate. Not to scale. Illustrative purposes only  
Made with Metropix ©2024



These particulars are believed to be accurate but they are not guaranteed and do not form a contract. Neither Jordan Fishwick nor the vendor or lessor accept any responsibility in respect of these particulars, which are not intended to be statements or representations of fact and any intending purchaser or lessee must satisfy himself by inspection or otherwise as to the correctness of each of the statements contained in these particulars. Any floorplans on this brochure are for illustrative purposes only and are not necessarily to scale.

Offices at: Chorlton, Didsbury, Disley, Hale, Glossop, Macclesfield, Manchester Deansgate, Manchester Whitworth Street, New Mills, Sale, Wilmslow and Withington

36-38 Alderley Road, Wilmslow, Cheshire, SK9 1JX  
**01625 532000**

wilmslow@jordanfishwick.co.uk  
www.jordanfishwick.co.uk