



jordan fishwick

45 Tiverton Drive, SK9 2TJ
Guide Price £184,950

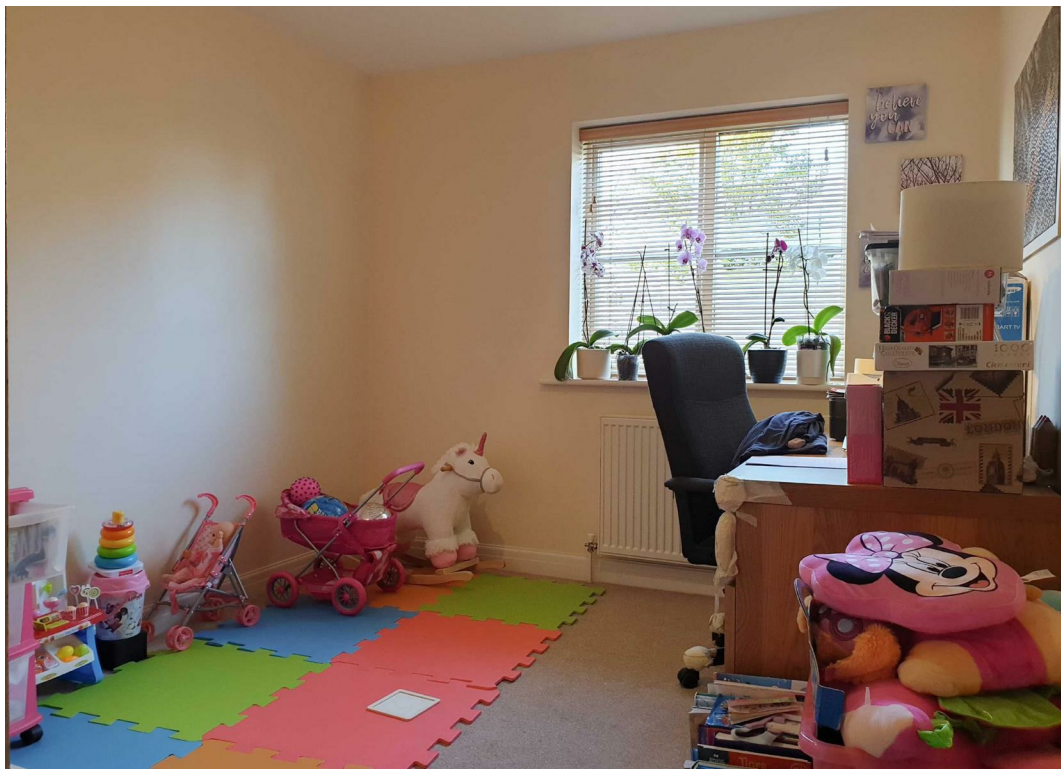


Tiverton Drive WILMSLOW SK9 2TJ

Guide Price £184,950




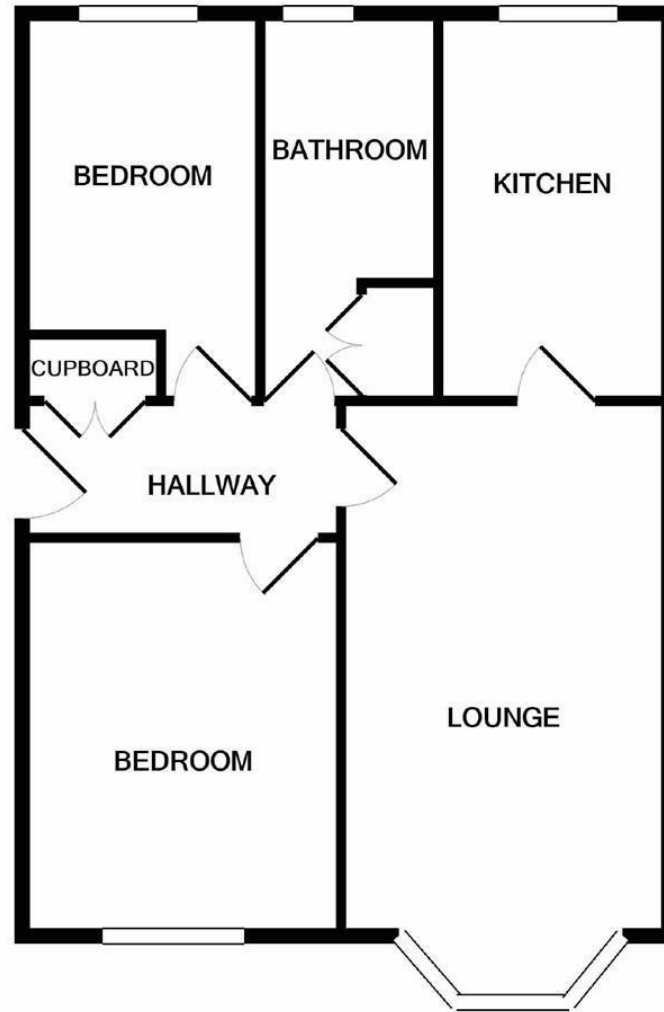
Located on this extremely popular estate is this ground floor apartment. Presented in excellent condition this apartment has off road parking, two double bedrooms and is within easy reach of local shops and the A34 and is only a short drive to Wilmslow, Alderley Edge, Handforth Dean and Manchester International Airport. Entrance hall with storage, lounge diner, modern fitted kitchen, two double bedrooms and bathroom. VIEWING HIGHLY RECOMMENDED.



- POPULAR LOCATION
- GROUND FLOOR
- OFF ROAD PARKING
- EASY REACH OF LOCAL SHOPS AND AIRPORT
- TWO DOUBLE BEDROOMS
- VIEWING RECOMMENDED
- EXCELLENT CONDITION



Energy Efficiency Rating		
	Current	Potential
Very energy efficient - lower running costs		
(92 plus) A		
(81-91) B	78	80
(69-80) C		
(55-68) D		
(39-54) E		
(21-38) F		
(1-20) G		
Not energy efficient - higher running costs		
England & Wales	EU Directive 2002/91/EC 	



Measurements are approximate. Not to scale. Illustrative purposes only
Made with Metropix ©2019



These particulars are believed to be accurate but they are not guaranteed and do not form a contract. Neither Jordan Fishwick nor the vendor or lessor accept any responsibility in respect of these particulars, which are not intended to be statements or representations of fact and any intending purchaser or lessee must satisfy himself by inspection or otherwise as to the correctness of each of the statements contained in these particulars. Any floorplans on this brochure are for illustrative purposes only and are not necessarily to scale.

Offices at: Chorlton, Didsbury, Disley, Hale, Glossop, Macclesfield, Manchester Deansgate, Manchester Whitworth Street, New Mills, Sale, Wilmslow and Withington

36-38 Alderley Road, Wilmslow, Cheshire, SK9 1JX

01625 532000

wilmslow@jordanfishwick.co.uk

www.jordanfishwick.co.uk