



jordan fishwick

Styal Road, SK9 4LE
Guide Price £389,950



Styal Road STYAL SK9 4LE

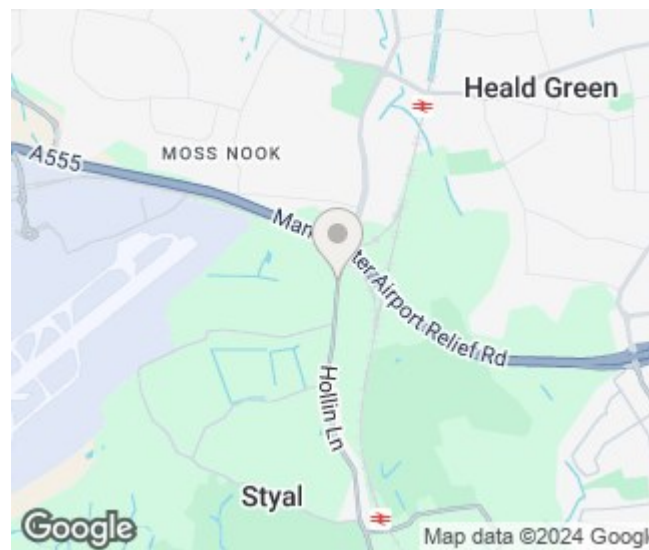
Guide Price £389,950




NO ONWARD CHAIN This three bedroom semi-detached property provides a potential buyer to 'put their own stamp' on the property. Being within close proximity to Manchester airport and countryside alike this residence is sure to impress. The ground floor accommodation comprises in brief; Entrance hallway, bay fronted living room, dining room and kitchen. The first floor comprises; two double bedrooms, another good sized bedroom and a family bathroom. Externally the property benefits from a large driveway providing off road parking for multiple vehicles. To rear is a garden which is mainly laid to lawn as well as benefitting from a garage. Viewings essential to fully appreciate.

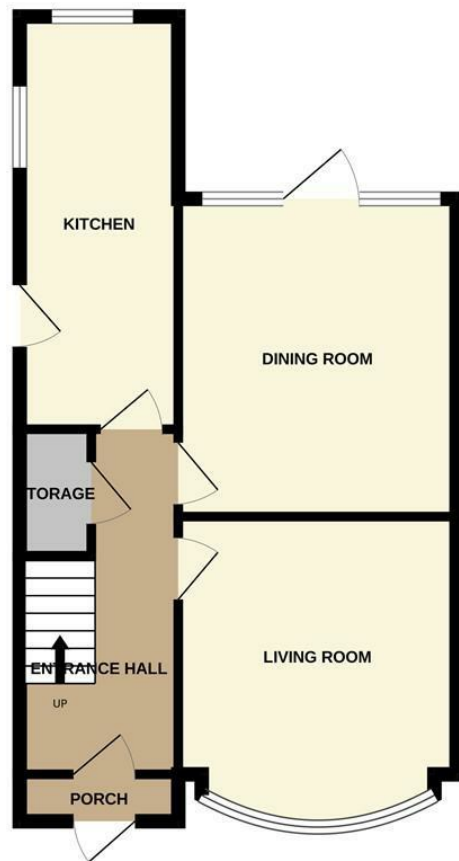


- Three bedrooms
- Semi detached
- Close proximity to Manchester airport
- Off road parking
- Short stroll to countryside walks
- In need of modernisation
- Easy access to Styal village
- Garage

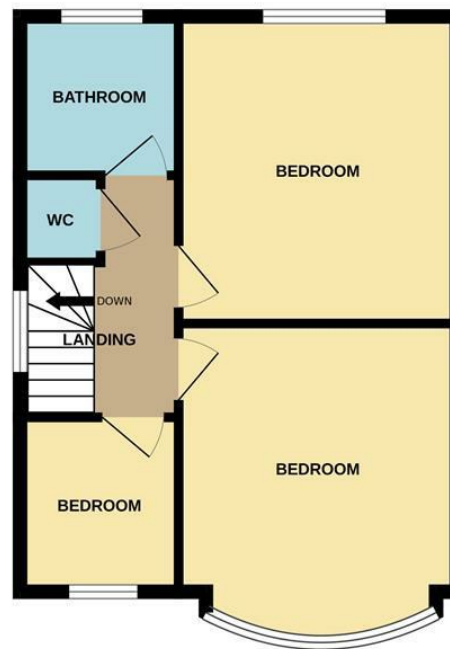


Energy Efficiency Rating		
	Current	Potential
<i>Very energy efficient - lower running costs</i>		
(92 plus) A		
(81-91) B		77
(69-80) C		
(55-68) D	60	
(39-54) E		
(21-38) F		
(1-20) G		
<i>Not energy efficient - higher running costs</i>		
England & Wales	EU Directive 2002/91/EC 	

GROUND FLOOR



1ST FLOOR



Measurements are approximate. Not to scale. Illustrative purposes only
Made with Metropix ©2024



These particulars are believed to be accurate but they are not guaranteed and do not form a contract. Neither Jordan Fishwick nor the vendor or lessor accept any responsibility in respect of these particulars, which are not intended to be statements or representations of fact and any intending purchaser or lessee must satisfy himself by inspection or otherwise as to the correctness of each of the statements contained in these particulars. Any floorplans on this brochure are for illustrative purposes only and are not necessarily to scale.

Offices at: Chorlton, Didsbury, Disley, Hale, Glossop, Macclesfield, Manchester Deansgate, Manchester Whitworth Street, New Mills, Sale, Wilmslow and Withington

36-38 Alderley Road, Wilmslow, Cheshire, SK9 1JX

01625 532000

wilmslow@jordanfishwick.co.uk

www.jordanfishwick.co.uk