



Jordan fishwick

Boundary House Styal Road, SK9 4LE
Guide Price £489,950



Styal Road Styal SK9 4LE

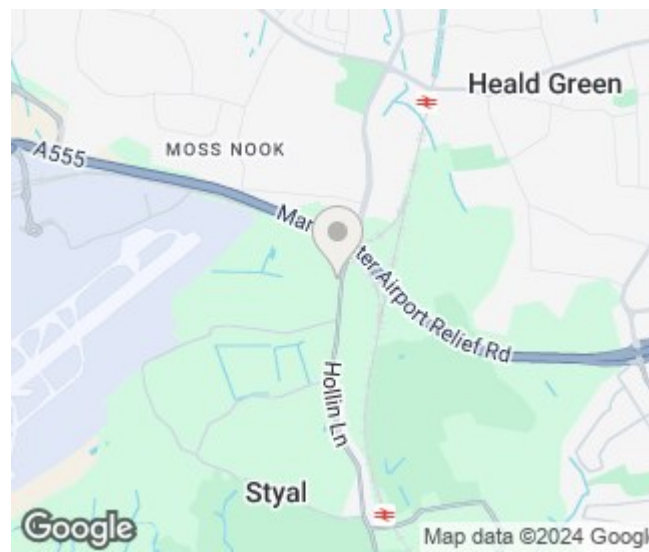
Guide Price £489,950




An extended three/ four double bedroom semi detached property in Styal. The property offers versatile accommodation with a large living room, kitchen diner, utility room, W.C and additional reception room/ bedroom to the ground floor. To the first floor there are three large double bedrooms with the principle bedroom benefiting from a large en suite shower room with large walk in shower area. There is a modern family bathroom. To the rear of the property the garden is enclosed and laid mainly to lawn with a small patio area. There is a gated driveway to the front offering off road parking.

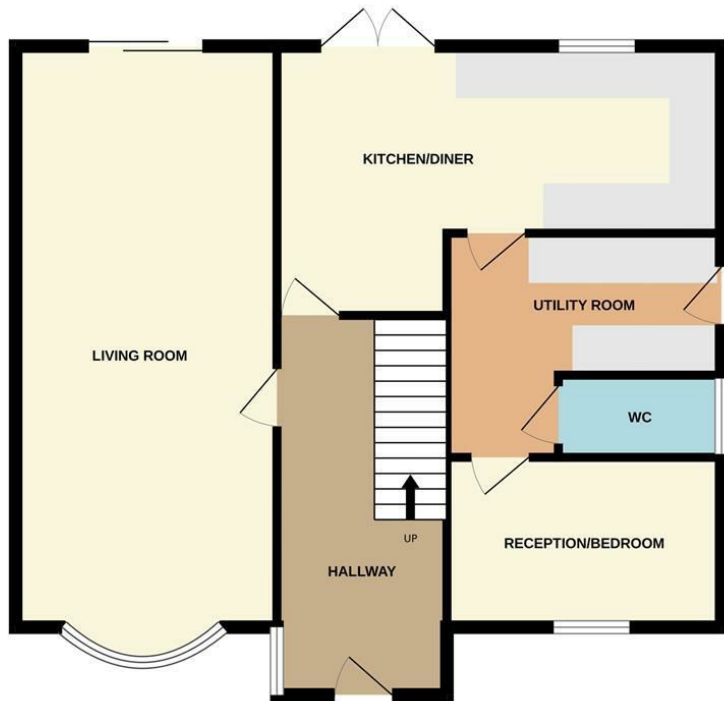


- Semi Detached
- 3/4 Double Bedrooms
- Versatile Accommodation
- Two Bathrooms
- Semi rural location
- Gated driveway
- Off road parking
- Enclosed rear garden



Energy Efficiency Rating		
	Current	Potential
<i>Very energy efficient - lower running costs</i>		
(92 plus) A		
(81-91) B		
(69-80) C		
(55-68) D		
(39-54) E		
(21-38) F		
(1-20) G		
<i>Not energy efficient - higher running costs</i>		
England & Wales	EU Directive 2002/91/EC	

GROUND FLOOR



1ST FLOOR



Measurements are approximate. Not to scale. Illustrative purposes only
Made with Metropix ©2024



These particulars are believed to be accurate but they are not guaranteed and do not form a contract. Neither Jordan Fishwick nor the vendor or lessor accept any responsibility in respect of these particulars, which are not intended to be statements or representations of fact and any intending purchaser or lessee must satisfy himself by inspection or otherwise as to the correctness of each of the statements contained in these particulars. Any floorplans on this brochure are for illustrative purposes only and are not necessarily to scale.

Offices at: Chorlton, Didsbury, Disley, Hale, Glossop, Macclesfield, Manchester Deansgate, Manchester Whitworth Street, New Mills, Sale, Wilmslow and Withington

36-38 Alderley Road, Wilmslow, Cheshire, SK9 1JX

01625 532000

wilmslow@jordanfishwick.co.uk

www.jordanfishwick.co.uk