



jordan fishwick

12A Jamie Webb Drive, SK9 3BF
Guide Price £533,950

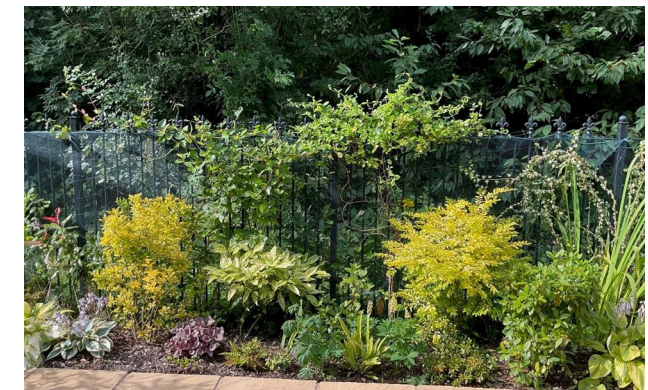


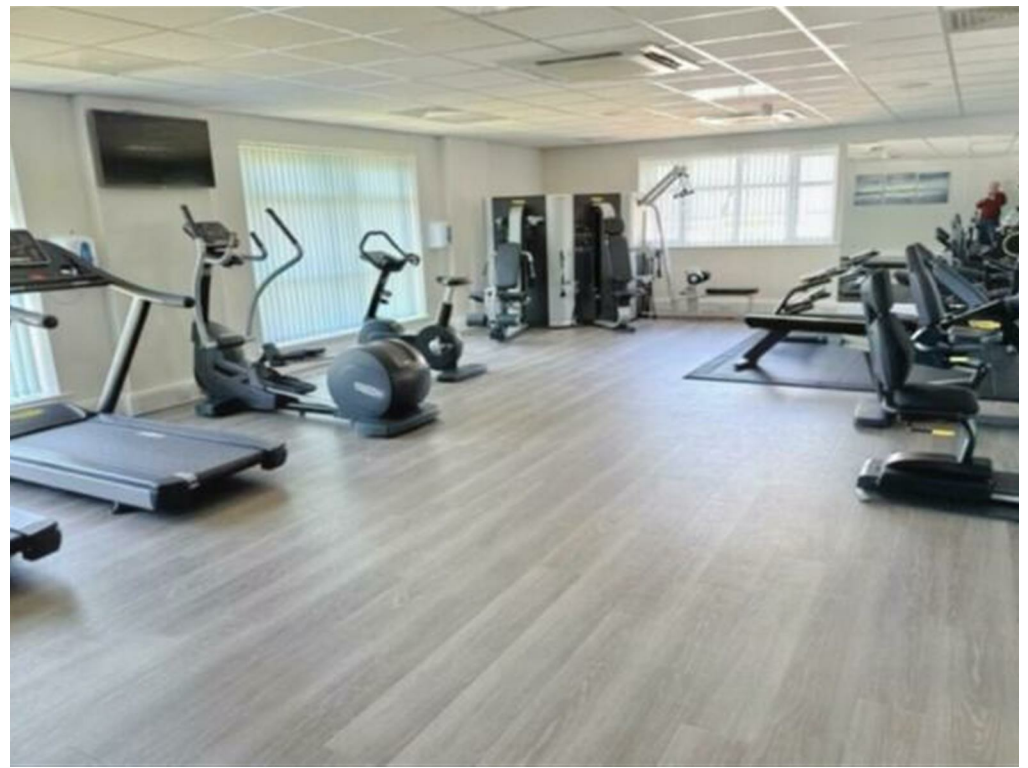
Jamie Webb Drive Handforth

Guide Price £533,950



No Chain. Located on the desirable over 55's Sanctuary development is this three bedroom modern semi detached property, situated within a gated community and benefitting from an exclusive clubhouse which includes a luxury gym and spa for the residents personal use. Benefitting from a NHBC guarantee this property 'The Wentworth' was constructed by reputable house builder 'Jones Homes' and has been finished to the highest of standards throughout, with some enhancements by the current owners. Offering spacious and versatile accommodation throughout the property will prove very popular.





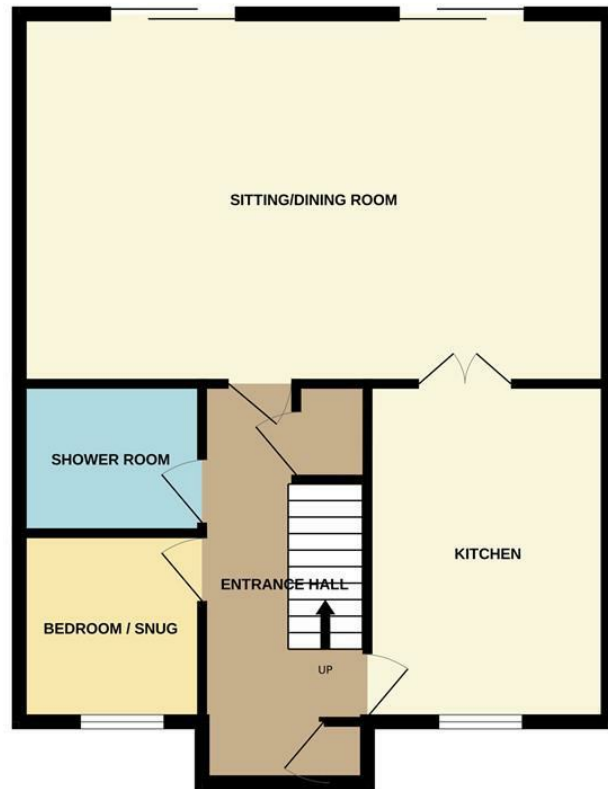
- Modern Property
- Three Bedrooms
- Semi Detached
- Over 55's
- Desirable Sanctuary development
- Spacious & Versatile accommodation
- Two Bathrooms
- Landscaped Rear garden
- Allocated Parking



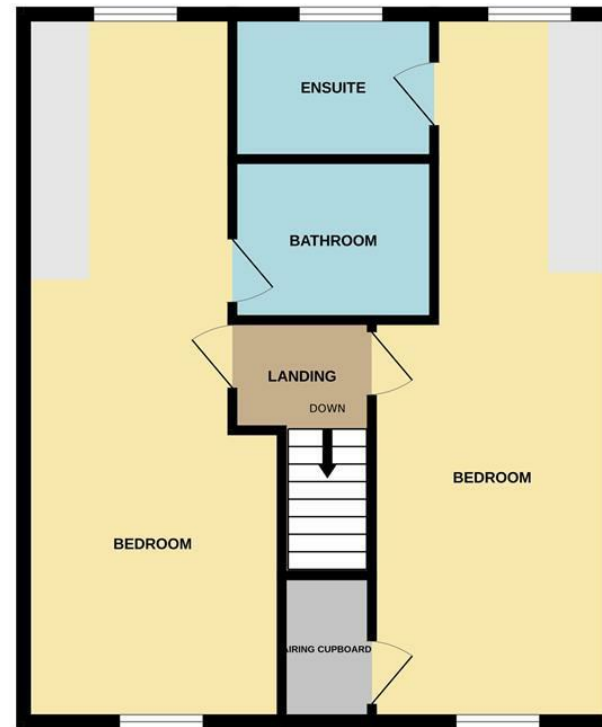
Energy Efficiency Rating		
	Current	Potential
Very energy efficient - lower running costs		
(92 plus) A		94
(81-91) B	85	
(69-80) C		
(55-68) D		
(39-54) E		
(21-38) F		
(1-20) G		
Not energy efficient - higher running costs		
England & Wales	EU Directive 2002/91/EC	



GROUND FLOOR



1ST FLOOR



Measurements are approximate. Not to scale. Illustrative purposes only
Made with Metropix ©2024



These particulars are believed to be accurate but they are not guaranteed and do not form a contract. Neither Jordan Fishwick nor the vendor or lessor accept any responsibility in respect of these particulars, which are not intended to be statements or representations of fact and any intending purchaser or lessee must satisfy himself by inspection or otherwise as to the correctness of each of the statements contained in these particulars. Any floorplans on this brochure are for illustrative purposes only and are not necessarily to scale.

Offices at: Chorlton, Didsbury, Disley, Hale, Glossop, Macclesfield, Manchester Deansgate, Manchester Whitworth Street, New Mills, Sale, Wilmslow and Withington

36-38 Alderley Road, Wilmslow, Cheshire, SK9 1JX

01625 532000

wilmslow@jordanfishwick.co.uk

www.jordanfishwick.co.uk